



**Resene**  
**Total Colour**  
**Awards 2010**

**Residential**

**Resene**

the paint the professionals use

[www.resene.com/colourawards](http://www.resene.com/colourawards)





Resene has a long history of colour in New Zealand with colours like **Resene Spanish White** and **Resene Pearl Lusta** created over three decades ago still continuing to be top choices for decorators today. In 1969 Resene set up a new system of colour, the British Standard Specification colour range which provided a range of strong colours at a time when New Zealanders were used to pastel colours.

And more recently, in keeping with Resene's focus on sustainable innovations, Resene has developed its own range of non VOC (volatile organic compound) tinters to enable all Resene decorative paints to be tinted without unwanted VOCs.

With thousands of Resene colours available, there's no point having all these colours if they aren't being used, which led to the creation of the **Resene Total Colour Awards**, launched this year, to celebrate and encourage creative use of colour.

Over 140 entries were received. Awards were given in ten categories:

- **Residential Exterior**
- **Residential Interior**
- **Display**
- **Product**
- **Sustainable System**
- **Rising Star**
- **Commercial Exterior**
- **Commercial Interior**
- **Lifetime Achievement**
- **Landscape**

and **Colour Master – Nightingale Award** for the best overall colour use.

We hope you enjoy viewing a range of the residential projects submitted to the **Resene Total Colour Awards** and that they provide inspiration for decorating projects of your own.





Livewire



## Watson-Smith New House

31 Johnstone Street, Point Chevalier, Auckland

The use of colour in this new Auckland house was integral to the whole exterior design concept. The main exterior cladding is the naturally coloured sepia black of the Mini-Onduline corrugated sheets.

Contrasting vividly with the black cladding, Resene Livewire was chosen to lacquer finish the tall, bold, glossy front door, to welcome and invite entry into the house.

The house is long and skinny in shape and steps down the slope to a row of Pohutukawas and a small stream and reserve at the bottom of the site.

A bright red, Resene Livewire window box, 'pops' out of the blackness and into the Pohutukawa trees at the lower end of the house. This acts as a positive termination to the lower end of the house and looks amazing, particularly in the summer when the Pohutukawas are in flower.





Colour was used in a focused and restrained way, behind glass to create and emphasise a particular character or energy in each space.

The main feature colour throughout the house, both internally and externally, is the wonderful red Resene Livewire. (We now have every single red, and variation of red in our office library!). Inside the house, Resene Livewire is featured in the kitchen which is literally at the 'heart' of the house, as a large back-painted glass splashback. It is the hub of the house and the Resene Livewire reinforces a positive, warming and friendly energy.

Natural materials of Meranti timber, bamboo flooring and stone tiles are taken through the house and it is then in the bathrooms where a particular colour has been highlighted:

In the ensuite, a fresh, energising and invigorating green was selected. We chose Resene Chameleon to feature behind the glass splashback where it feels like you are biting into a fresh, crisp Granny Smith apple each morning!

For the main family bathroom, a more fun and punch colour; Resene Extrovert was chosen (and approved by the 10-year-old daughter). Resene Extrovert provides a bright, cheerful character and gets regular positive comments when visited by guests.



Livewire

Extrovert

Chameleon

**Architectural Specifier:** Carolyn Smith

[www.smith-scully.com](http://www.smith-scully.com)

**Building Contractor:** Shore Developments

**Colour Selection:** Carolyn Smith

**Interior Designer:** Carolyn Smith

**Painting Contractor:** T.L. Baldock, Way-Out-West Glass

**Photographer:** Carolyn Smith

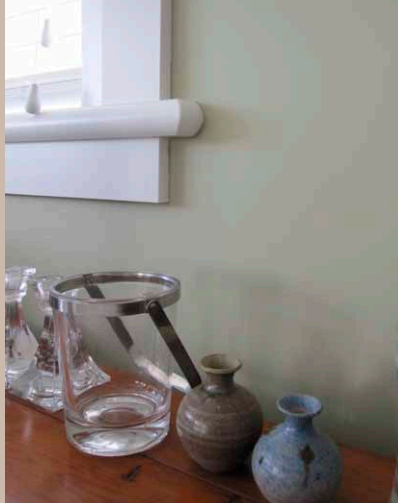
**Other Key Contributors:** The team at Architecture Smith & Scully Ltd

**Colours Used:** Resene Chameleon, Resene Extrovert, Resene Livewire

**Products Used:** Resene Lustacryl, Resene Lumbersider

## Laurie Ave

15 Laurie Ave, Parnell, Auckland



Metamorphis


Lodestar

Black  
White

Neutral  
Green

Half  
Thorndon  
Cream

Mondo

 Resene Half Joss

After a long overdue renovation, this interior space has finally been transformed into a warm inviting home with the help of dynamic yet subtle colour choices.

The whole design concept was one of minimal vintage calm with colours providing a contemporary feel.

The spaces are large with high stud and could cope with good purposeful colours that still reflected the age and history of the house. The crispness of Resene Black White perfectly sets off all the other colours – this neutral grey white runs through the entire interior scheme effortlessly tying all the spaces together as it is on all joinery, trims and ceilings.

Resene Lodestar metallic is used in a focused manner on the chimney breast and the dining corner and helps break up and zone the family space. Resene Lodestar adds a subtle glamour and sweeps up the vibe a notch without being too flashy – the rich warm gold metallic does an amazing job complementing the more vintage Resene Neutral Green from the Karen Walker Paints range in the family room and ties in nicely with the existing furniture and materials.

In the lounge, Resene Metamorphis conquers a large area without overwhelming the space. This subtle vintage colour both complements the Resene Neutral Green and reads as a beautiful blue green that changes mood with the seasons. The stairwell is finished in Resene Neutral Green and uses Resene Mondo on the handrail, tying in well with the deep brown light shades and dark stained floors.

It wasn't the intention that the colours necessarily be vintage but that is how well they have worked out.

Finally, the ensuite to the master bedroom is a small but perfectly formed space made inviting with the use of Resene Half Thorndon Cream, clean and warm, with Resene Black White on trims and joinery.





The exterior of the kauri timber villa had suffered from years of neglect. So this renovation was a great opportunity to enliven the whole facade. While the renovation was to the front 'living' half of the house, the whole exterior was painted and the scheme had to ensure that all the new and old wooden joinery tied in together as if it had always been there. The design scheme was the idea of timeless simple classic elegance.

The aim was to turn the whole 'white weatherboard/coloured trims' on its head so the weatherboards would seem warm rather than cool while still achieving a high reflectance value. The main colour is Resene Caraway (LRV 60%) that achieves this spiced warmth while still feeling clean and new. Using Resene Black White (LRV 84%) for all the joinery and Resene Mondo (LRV 13%) in Resene CoolColour technology for sills and doors achieves a dynamic contrast to the whole facade and helps all the wooden window trims and sills to really 'pop'.

The Resene Mondo also works so well with COLORSTEEL® Ironsand which was specified on the new roof iron and all gutters and downpipes. Using Resene



Caraway

Black  
WhiteQuarter  
Caraway

Mondo

Mondo in a Resene CoolColour formula means lasting colour richness throughout the seasons.

The deck and stairs are finished in Resene Quarter Caraway (LRV 75%) and included Resene SRG Grit in the first coat to prevent slipping by users. The handrails to deck and stairs are accented in the Resene Mondo for that dynamic contrasting mix.

The exterior paint job has taken the house from the worst to the 'best dressed' in the street.



**Architectural Specifier:** Fleur Ford

**Building Contractor:** Maungawhau Builders Ltd

**Colour Selection:** Fleur Ford

**Interior Designer:** Fleur Ford

**Painting Contractor:** Din Keototawng (subcontractor to Maungawhau)

**Photographer:** Fleur Ford

**Colours Used:** Resene Black White, Resene Caraway, Resene Half Thorndon Cream, Resene Lodestar, Resene Metamorphis, Resene Mondo, Resene Neutral Green, Resene Quarter Caraway

**Products Used:** Resene Zylone Sheen, Resene Enamacryl Metallic, Resene Ceiling Paint, Resene Lustacryl, Resene Enamacryl, Resene Lumbersider, Resene SRG Grit









## Turangi Holiday Home Renovation

54 Gosling Grove, Turangi

The property was renovated from a house and double garage into three separate apartments for the holiday market, catering to fishermen and skiers who love the Turangi area.

The exterior has various details in relief, the chosen colours are designed to emphasise each change in surface, from weatherboard, to titan board to cedar.

The Resene colours were decided on for their connection to the surrounding colours of the Central North Island landscape and Turangi's mix of beautiful rivers and forest. Using Resene Conch against the Resene Half Felix and Resene Gargoyle gives a strong contrast which

brings out the tones in each colour. The soffits are painted in Resene Stark White, lifting them and accenting the cedar.

Each surface was considered an object, a charming connection between existing and new elements. The new was marked with titan board and cedar board and batten and the existing with the weatherboards. Each facet has an individual colour wrapped around it. The specific colour follows the entity around until a break in the surface, whether that be material or edge. Like a patchwork quilt, the colours bind together in distinction.



Half Felix

Gargoyle

Stark White

Eighth Tuna

Conch

Nero

 Resene Relax







Oilskin

Inside  
Back

Bel Air

Gargoyle

Stonewall

Rockbottom

Half  
Oilskin

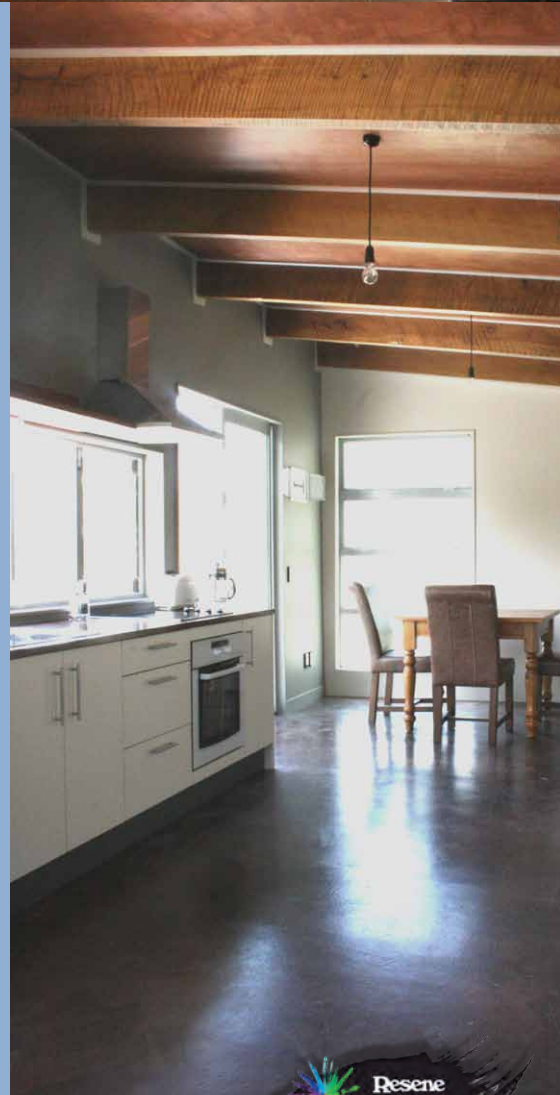
Napa

Buffalo

Drought

Stark  
White

Bubble  
White

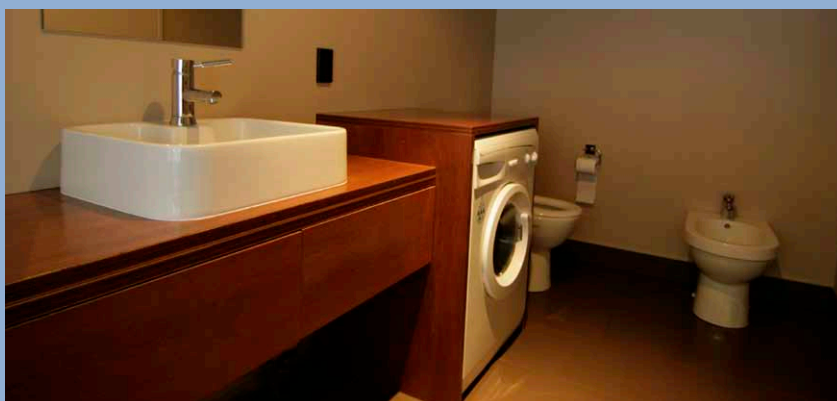


Each room of the interior has a different colour combination, creating a diverse experience within a harmony of the overall colour scheme. When all doors are open, each area works with the next, creating flow from room to room.

It was important to have synchronisation, choosing one colour, Resene Stark White for all the highlighted woodwork and Resene Bubble White for the ceilings, ties all the spaces together. The natural woodwork gives a strong contrast with any wall paint, maximising the tones of both the impact colours and the 'white'. The colours were chosen for their ambience; they connect with the surrounding landscape of Turangi.

Impact and harmony are very important to create a statement. The impact is achieved by choosing very different colours, such as Resene Barista and Resene Napa, but similar tones. The dustiness of the colour creates the harmony. The position of these wall paints is also vital, the two contrasting colours must butt together at a point where the viewer will appreciate them at first glance on entering the space. For example, the opposite corner to the entrance of an area.

It is important to ensure the exterior colours of the property work well with the interior, without being identical. The viewer always reads a property as a whole, from outside in and from space to space. Cohesion is the key.



Barista

Stark  
White

Copyrite

Half  
Oilskin

Dark Rimu

Xotic

Domino

**Architectural Specifier:** Nicola Habbitts & Mike Melville  
**Building Contractor:** Daniel Melville  
**Colour Selection:** Nicola Habbitts  
**Interior Designer:** Nicola Habbitts  
[www.designhabbitts.co.nz](http://www.designhabbitts.co.nz)  
**Painting Contractor:** Robertson Painting & Daniel Melville  
**Photographer:** Nicola Habbitts

**Colours Used: (Apartment 1)** Resene Bel Air, Resene Bubble White, Resene Buffalo, Resene Drought, Resene Gargoyle, Resene Half Oilskin, Resene Inside Back, Resene Napa, Resene Oilskin, Resene Rockbottom, Resene Stark White, Resene Stonewall

**(Apartment 2)** Resene Barista, Resene Bubble White, Resene Copyrite, Resene Drought, Resene Half Oilskin, Resene Napa, Resene Stark White

**(Apartment 3)** Resene Domino, Resene Drought, Resene Inside Back, Resene Stark White, Resene Xotic

**Products Used:** Resene SpaceCote Low Sheen, Resene SpaceCote Low Sheen Kitchen & Bathroom, Resene Lustacryl, Resene Ceiling Paint, Resene Uracryl




**Kawau Residence**

6 Kawau Grove, Waikanae





 Resene Earthstone

This home resides in the coastal township of Waikanae Beach.

The house planning allows for efficient use of floor space and a variety of connections with the outdoors.

The layout and light colour scheme encourage a relaxed lifestyle while exploiting an excellent quality of natural light and views to the Kapiti Island.

The garden provides an area for relaxation while an alfresco dining area with an open fire encourages outdoor entertainment.



Crowshead

Pitch Black

Tsunami

Alabaster

Kwila



Resene Total Colour Residential Interior Award








Resene Total Colour Residential Interior Award





 Resene Earthstone

The home is a relaxed family home and it adheres to wholesome principles – efficient orientation and planning, use of natural light and ventilation, and appropriate material and colour selection.



Soapstone

Blanc

Half  
Drought

Drought

Double  
Malta

Double  
Drought



**Architectural Specifier:** Space Architecture Studio

[www.spacearchitecture.co.nz](http://www.spacearchitecture.co.nz)

**Building Contractor:** Hayden Construction

**Colour Selection:** Tushka Glintmeyer

**Interior Designer:** Tushka Glintmeyer

**Painting Contractor:** Hayden Construction Ltd

**Photographer:** Peter Evans and Liz Evans

**Colours Used:** Resene Alabaster, Resene Blanc, Resene Crowshead, Double Drought, Resene Double Malta, Resene Drought, Resene Half Drought, Resene Kwila, Resene Pitch Black, Resene Soapstone, Resene Tsunami

**Products Used:** Resene Woodsman, Resene decorative paints

**Resene Total Colour Residential Interior Award**





## Buchanan Residence

Okawa Bay, Lake Rotoiti

The client had owned the property as a holiday home for a number of years. This was to become their permanent residence. Intense discussion was had around whether the existing house was worth keeping considering the brief requirements. It was decided there was enough to consider keeping. They required a master suite, walk in wardrobe, ensuite, deck with spa pool with lake views, larger living spaces, external living spaces and a modernised kitchen. Not to mention on site parking for an additional two cars, a new heating

system, new insulation, new water bore and storage tanks. Budget \$650k.

The steep nature of the site provided many challenges. The identified space for additional on site parking-carport was the front yard space. This required consultation with Transit NZ and resource consent. This was successfully negotiated. The car-deck also solved the location of the water storage tank which is semi-sunken under.

A full new upper level space is morphed into the roof form to lessen the impact of

what is a four storey house in parts and minimising shadow effect to neighbours. The inverted roof over the ensuite is a paradox to the gentle roof of the apex.

The external claddings are a purposeful mix of textures, materials and colours. The tapestry of claddings breaks the forms and mass of walls. The patchworked colours to cladding near the entry are employed to define the entry point, but are also reflective of the surrounding landscape.





The existing living spaces push out to incorporate the old deck space, then a new steel structure cantilevers out over the access below to create the outdoor living space.

The exposure of the house required this outdoor space to be fully operable to change as the conditions change. Cedar and glass bi-folds outside of the barriers, operable roof, gas fire, sound system and LED lighting ensure this outdoor space can extend the internal spaces to the exterior in any weather.

The stairwell is flooded with light via skylight, which then emits light to southern bedrooms via high level internal glazing. Internal surfaces are high quality incorporating travertine, marble, granite, natural timber veneers and wool blend carpets. With the client's love of boats, we added some quirky details, such as porthole entry door and stainless wire rigged barriers so he could reminisce.

The external colour scheme was required to deliver on many levels. It needed to be respectful of the surrounding lake setting and landscape when viewed from the lake. Up close, it was to offer a rich diversity of colour and texture and, unlike most properties, also needed to be presentable when viewed from above as the driveway descends on the house above the roof-line.

Our solution was to mix the cladding types, and offer a variable palette of colour. This patchwork of natural plastered veneer, horizontal corrugated metal, vertical cedar shiplap, and titan panels, breaks and defines blocks of walls.

The client's dislike of blue led to green and brown cues taken from the surrounding lake-scape for the feature cladding near the entry. We joked the mint green colour matched the lake algae bloom horror of the recent past.



The roof has been purposefully picked out in a light colour for two reasons. From the lake, the roof is barely visible, therefore not a dominating feature. Approached from above the roof is read against the lake which is mostly reflective of the sky and clouds, thus a light coloured roof was chosen.

The colour and material solution has proven to be quite successful, while maintaining a high degree of originality.

- Maxwell Smart
- Spirulina
- Inside Back
- Panzano
- Bone White

**Architectural Specifier:** Darryl Church Architecture  
[www.darrylchurch.co.nz](http://www.darrylchurch.co.nz)  
**Building Contractor:** Builders By Design  
**Colour Selection:** Darryl Church  
**Interior Designer:** Peter Reynolds  
**Painting Contractor:** Steve Todd & CBD Painters  
**Photographer:** Tracey Robinson

**Colours Used:** Resene Inside Back, Resene Maxwell Smart, Resene Panzano, Resene Spirulina, Bone White  
**Products Used:** Resene decorative paints







 Resene Chameleon


## Home Renovation Days Bay

5 Korimako Road, Days Bay, Eastbourne

This renovation dealt with two floors out of a three level house, the kitchen, hallway and two bedrooms. Large dormer windows were added to each of the attic bedrooms, to increase their space. As in traditional attics, their ceilings slope down to short walls, to counteract the restriction of space. Light colours were fundamental, but contrast is still important to add interest. The chosen colours, Resene Stark White and Resene Drought, work on similar tones but with enough distinction to highlight the numerous angles of the roof and dormers.

In the kitchen, the floor to ceiling windows create a strong connection to the native Eastbourne bush. To reflect this, a piece of natural granite was

chosen for its movement and colour. The use of soft greens and browns and natural wood draws the bush into the internal environment of the kitchen.

The paint colours are instrumental in bringing together the rimu and stone, creating a cohesive design. The Resene Double Alabaster on the walls highlights the appealing tones of the Resene Lemon Grass cabinetry, creating an alluring contrast. The colours also accentuate the interesting lines of the custom joinery, making it distinct and elegant.

The soft surrounding paint hues emphasise the beautiful granite bench, making it the focus of the space.

The paints used were all from the Resene Environmental Choice approved product range.

Alabaster

Lemon  
GrassDouble  
Alabaster

Stark White

Drought

**Architectural Specifier:** Nicola Habbitts  
[www.designhabbitts.co.nz](http://www.designhabbitts.co.nz)

**Building Contractor:** Daniel Melville

**Colour Selection:** Nicola Habbitts

**Interior Designer:** Nicola Habbitts

**Painting Contractor:** Daniel Melville

**Photographer:** Nicola Habbitts

**Colours Used:** Resene Alabaster, Resene Double Alabaster, Resene Drought, Resene Lemon Grass, Resene Stark White

**Products Used:** Resene SpaceCote Low Sheen Kitchen & Bathroom, Resene Ceiling Paint, Resene ArmourCat 822, Resene Lustacryl Kitchen & Bathroom, Resene Broadwall Surface Prep & Seal, Resene Quick Dry





Vescio Residence

Butel Park, Arrowtown







A natural combination of earthy colours enhance the transparency of the interiors to link with the landscape beyond.

Resene Quarter Thorndon Cream painted walls and ceilings, plus polished aggregate floors are subdivided by ironbark inlays and copper effect walls to enhance the open plan architecture.

Resene Waterborne Woodsman Hackett Black stained cedar board and batten and schist stone walls extend from the exterior to the interior as integral design features. A western red cedar ceiling in the Foyer floats between gabled pavilions. Polished indoor concrete floors extend to connect outdoor living exposed aggregate paving and gravel base gardens.



Quarter  
Thorndon  
Cream

Hackett  
Black

**Architectural Specifier:** Gary Todd Architecture Ltd  
[www.garytodddesign.co.nz](http://www.garytodddesign.co.nz)

**Building Contractor:** Nathan Simon

**Colour Selection:** Gary Todd, Joe and Francis Vescio


**Interior Designer:** Gary Todd

**Painting Contractor:** Nathan Simon

**Photographer:** Graham Warman

**Colours Used:** Resene Quarter Thorndon Cream, Hackett Black, Copper Effect

**Products Used:** Resene SpaceCote, Resene Woodsman, Resene Metallic

 Resene Blackjack









## Hager & Lai Residence

2 Carson Street, Dunedin

Bold colour combinations in a contemporary kitchen, living and bathroom juxtapose traditional villa character painted in tonal shades of Resene Pearl Lusta. Red mosaic tiles, black granite, black gloss lacquered joinery, and polished kauri flooring provide warm textured finishes.

Resene Black White painted walls and ceiling, plus white claw foot bath and vanity top, contrast grey speckled granite floor and wall tiles and black gloss lacquered joinery. Lighting effects and a feature rug enhance the flow of space. The use of colour is a breath of fresh air to sustainably deliver modern living within the interior charm of a reworked villa.



Double  
Pearl Lusta

Half  
Pearl Lusta

Eighth  
Pearl Lusta

Black  
White

Black

**Architectural Specifier:** Gary Todd Architecture Ltd  
[www.garytoddsgn.co.nz](http://www.garytoddsgn.co.nz)

**Building Contractor:** Kennedy & McBeath Builders

**Colour Selection:** Garry Todd, Tyler Hager, Chuan Lai

**Interior Designer:** Gary Todd

**Painting Contractor:** Bryce Reynolds

**Photographer:** Graham Warman

**Colours Used:** Resene Black, Resene Black White, Resene Double Pearl Lusta, Resene Eighth Pearl Lusta, Resene Half Pearl Lusta

**Products Used:** Resene SpaceCote, Resene Lustacryl, Resene ArmourCat

## The Steeple

22 Kesteven Avenue, St Heliers

Once a Baptist church, this iconic piece of 60s architecture is now a vibrant home and work place for an architect and his family.

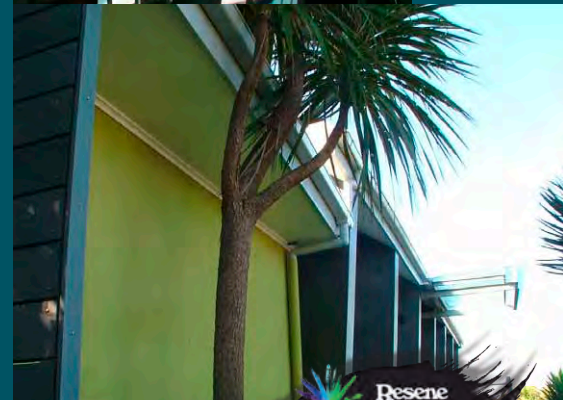
Reflecting on its Baptist origins and the surrounding Waitemata Harbour, the colour palette has been inspired by a connection to water.

As the building is neither a church nor a typical residential home the architect felt at ease to explore non conventional paint finishes in the middle of this conservative East Auckland suburb. Silver metallic finishes glisten in the sunlight by day, while the glow of stained glass windows and coloured lights emanate from this intriguing home by night.

The heavy concrete buttresses are painted in Resene Blast Grey 1 while the profile cladding on the main street façade is Resene Silver Aluminium.



The Spandrel panels are painted Resene Tsunami and the negative detailed weatherboards are finished in the blue toned stain Resene Limed Spruce. The entry is emphasised by the only exterior green tone – Resene Billy T.



**Architectural Specifier:** Xsite Architects [www.xsite.net.nz](http://www.xsite.net.nz)

**Building Contractor:** Craig Ivall Builders

**Colour Selection:** Resene

**Interior Designer:** Xsite Architects

**Painting Contractor:** Precision Painters

**Photographer:** Malcolm Taylor and Gareth Thomas

**Colours Used:** Resene Billy T, Resene Half Sea Fog, Resene Limed Spruce, Resene Blast Grey 1, Resene Silver Aluminium, Resene Tsunami

**Products Used:** Resene Enamacryl Metallic, Resene Woodsman, Resene decorative paints





The existing building provided much of the inspiration for the interiors. The modernist stained glass façade suggested something rhythmical could happen and invited the use of primary colour. Reds, ambers and aqua blues already existed in the original coloured glass. A bold wallpaper decision lifted the height of the nave and echoed the stained glass configuration. The natural tones of the original rim ply anchor the interior and colour is respectfully combined with these earthy tones. Dusty blues, yellows and reds rest easily alongside the earthy, muted base colours.







## Waikete Valley Wonder

658 Waikete Valley Road, Rotorua



This family home was designed to capture the stunning 360 degree views offered on location – Mt Ruapehu can be viewed from the living room and office on a clear day. Sitting proudly on an exposed hill top, this 300 square metre home is anchored yet majestic as it demands attention within the rolling hills of the countryside and the Paeroa ranges beyond.

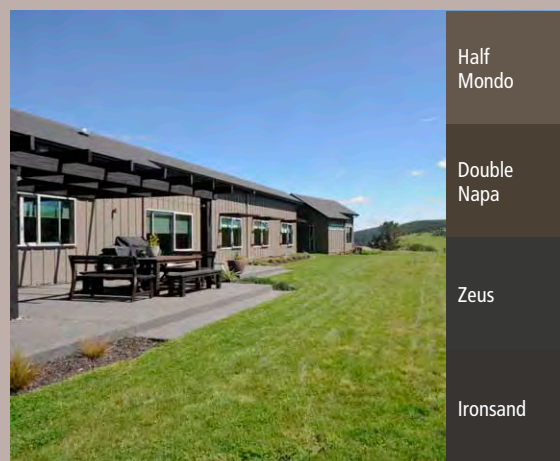
This building is contemporary in design and needed to show presence within this stunning environment and reflect the reason for being – a family farmhouse. In true farmhouse tradition the use of board and batten to clad the home has been painted in Resene Lumbersider tinted to Resene Half Mondo. Resene Ironsand was used on the iron roof and the bagged brick spine and chimney have been painted Resene Lumbersider tinted to Resene Double Napa and finished with the mortar, screed in a non-uniformed trowel pattern, which complements the other rustic materials.

To highlight the building's various forms, textures and roof styles, different colours were used on each material. The inspiration for these colours was the earthy tones apparent in nature, during our long, dry and hot summers.

Resene Double Napa was chosen as the colour for the brick cladding on the south side of this home, the chimney and each side of the entrance, this elevation mainly lives in shadow cast by the building itself. The clever design elements of this building are vast and of particular interest is the seeming appearance of a group of pods attached to the central brick wall – the spine, as viewed from the south elevation.

On the north side of the central brick wall the roof changes shape and becomes a hip roof with gable ends. In fact there are actually three styles of roof covering this one dwelling – the middle roof running the full length of the home is flat and on the entrance side (south facing) each pod is covered by a raking ceiling, whereas the north elevation is more traditional with a hip roof and gable ends.

Resene Half Mondo has been used on the north side of this home as it sits exposed to the elements – bathed in full sun during summer the outdoor room is a favourite spot. Use of a darker colour on this side visually reduces the tall, long scale of the building ensuring it remains anchored to the landscape.



Half  
Mondo

Double  
Napa

Zeus

Ironsand

**Architectural Specifier:** Darryl Church Architecture [www.darrylchurch.co.nz](http://www.darrylchurch.co.nz)

**Colour Selection:** Marlene Hudson Design

**Interior Designer:** Marlene Hudson Design


**Painting Contractor:** J Dringool Painters

**Photographer:** Deanna Onan

**Other Key Contributors:** The Polish Shop (front door)

**Colours Used:** Resene Double Napa, Resene Ironsand, Resene Half Mondo, Resene Zeus

**Products Used:** Resene Lumbersider, Resene decorative paints

 Resene Fantail





## Contemporary Beach Retreat

Simpson Road, Papamoa Beach

This project is an architecturally designed two storey home on a well established street with mature trees at the end of a quiet cul-de-sac and situated just across from the beach.

The main design concept of this project was to use strong, contrasting colours and materials with an emphasis on black, to accentuate its modern design and complement the luscious tropical landscaping.

The exterior colour scheme uses Resene Pitch Black as the main feature colour on the texture 2000 plywood with subtle grey and crisp whites on the raw masonry block veneer, fascia and soffits. This colour palette gives a contemporary twist on the 'old kiwi beach bach'.

There was a lot of controversy when we specified black on the exterior cladding because dark coatings are liable to overheat. After extensive research we were delighted to find Resene Waterborne Woodsman CoolColour™ technology gave us the chance to use black as the product reflects more heat than normal colours while still providing the natural plywood effect we were after.

The end result is extremely satisfying and visually appealing as the quality of the black stain accentuates the plywood which gives the house the added wow factor and designer edge we were after.

We were extremely impressed with the Resene Waterborne Woodsman CoolColour technology and will continue to specify this product in all future projects.



**Building Contractor:** Nathan Mouldey  
**Colour Selection:** Jennifer Harford  
**Photographer:** Nikki South and Jennifer Harford

**Colours Used:** Resene Pitch Black  
**Products Used:** Resene Waterborne Woodsman CoolColour





## Percy House

### Mangakino Lane

Perched on a ridge, nestled within bush overlooking the Mangakino Waterfall is the Percy House. This north facing home was designed to optimise indoor/ outdoor flow beckoning one to enjoy the secluded relaxing environment and optimise the magnificent views of the delightful waterfall in the valley below the house.

Built in two pods with adjoining covered deck, the house offers generous living conditions for the owners in one pod while offering separate self contained accommodation for family and friends in the other.

**Architectural Specifier:** Geoff King Architect, Designgroup architects h+k  
[www.ahk.co.nz](http://www.ahk.co.nz)  
**Building Contractor:** Mark Dobbs, MD Builders Ltd  
**Photographer:** Alan Percy

**Colours Used:** Resene Green Meets Blue, Resene Half Tea, Resene Oiled Cedar  
**Products Used:** Resene Waterborne Woodsman, Resene Thixalon 5, Resene Lusta-Glo

From the entry gates a bush lined drive brings the visitor to the front door. The walls at this point are solid offering privacy to the residents and intrigue to the visitors.

The oiled cedar panels anchor the building to the volcanic soils and the Resene Green Meets Blue and Resene Half Tea blend with the varying moods of the sky enhancing the float appearance of the building when viewed from the waterfall.

It is not until you enter the building that the splendour of the location is revealed, magnificent views unfold before you with views framed by every window. Internal colours in the living areas are muted, soft and delicate so as not to compete with the views, bedrooms in the guest wings being more secluded have deeper and bolder colours.

Oiled  
Cedar

Half Tea

Green  
Meets  
Blue

 Resene Optimist







 Resene Pursuit



## Omaha Beach House

45 Kewai Street, Omaha



Aths  
Special

Quarter  
Pearl Lusta



The different functions of the house were given their own shape and materials, resulting in a sculptural and playful composition:

The inspiration for this concept was the architect's favourite game with his young daughter: 'blocks'. Father and daughter used wooden blocks in different colours and shapes to create interesting architectural objects and 'environments'. The Omaha Beach House is a continuation of this process at a larger scale.

Kamermans & Co Architects also did the interior design as well as the landscape design of a low water use 'native dune' style garden with plant colours to complement the house colours.

The interior design creates a contemporary yet comfortable and lively ambiance.

The client owns a plantation forest and has a love for solid wood that inspired the design of the dining table, coffee tables, audio/visual cabinet, bedside tables and bed-heads as well as the 'reconstituted tree trunk' barstools. The trunks are cut into 60mm slices which are then rearranged to suit ergonomic and aesthetic requirements. Each stool is different because the natural shape and texture of the original tree trunk is retained. Kamermans & Co Architects also designed the sofas as a retro version of the classic 'chesterfield'.

Sustainable features of the house include rainwater collection/storage for all water use, solar/electric water heating, natural space cooling, and passive solar heating with low energy use heat-pump backup.

**Architectural Specifier: Kamermans & Co Architects**

**Building Contractor: Arjan Sibbing**

**Colour Selection: Kamermans & Co Architects**

**Interior Designer: Kamermans & Co Architects**

**Painting Contractor: Mike Fleming**

**Photographer: Kamermans & Co Architects**

**Colours Used: Resene Aths Special, Resene Quarter Pearl Lusta**

**Products Used: Resene decorative paints**



## Hallway and Bathroom 1

6 Orana Esplanade,  
Victoria Point



This project is a renovation to bathroom and hallway using all Resene colour paints and finishes.

### Bathroom

I am a student of interior decorating. I started off this project with this bathroom and wardrobe. I organised to remove the wall of the wardrobe and extend the bathroom and toilet creating a more stylish and open look. I have changed the window to a full length wide window to basically bring the outside roofed garden inside, achieving a zen effect (attainment of enlightenment) or calm area. From the toilet or bath or anywhere inside of this room.

The floors were retiled and shower was relocated to where the wardrobe was. The doorway to the original bathroom was changed to the wall and the wardrobe opening is now used for the doorway to the room. A cabinet was redesigned by myself and the cabinetmaker used Resene paint colour in two pak. Double sinks and silver and white accessories complete the look. This bathroom has a

ying and yang effect with the colours and accessories that have been used. The full length horizontal mirror has bought light and reflection into the room. All in all a pleasure to enter. The colours used have a muted relaxed complementary hue.

### Hallway

The hallway leading to the second bathroom, laundry and bedrooms has kept the same basic shell but is now redecorated in a new colour palette. The floor coverings match those used in the bathroom. The neutral hall shading is joined by a touch of colour on the recessed corners and end wall creating a relaxed thoroughfare through this home.

House  
White

Half  
Sidewinder

Half  
Masala

Lemon  
Grass

**Colour Selection:** Shelley Marshall  
**Interior Designer:** Shelley Marshall  
**Painting Contractor:** Philip Marshall  
**Photographer:** Shelley Marshall

**Colours Used:** Resene Half Masala, Resene Half Sidewinder,  
Resene House White, Resene Lemon Grass  
**Products Used:** Resene decorative paints

 Resene Crossroads





Resene Kombi

## Epuni Street Studio

12 Epuni Street, Aro Valley

The Epuni Street Studio project is a newly built garage with a studio over situated in front of an existing house. The new exterior colour scheme unites the two structures.

The traditional turn-of-the-century houses in Epuni Street, Aro Valley are celebrated for their lively exterior colours. Our clients sought to carry on this tradition – although we had to find a balance between adventurous and understated to match the couple's differing views.

The result is a fresh and lively colour scheme with a Scandinavian feel. The neutral trim allows the bold colours to shine.

Bounce

Foggy Grey

Soapstone

Crisp Green

Taupe Grey

Moody Lavender

**Architectural Specifier:** Amelia Minty  
**Building Contractor:** Ehan Russell  
**Clients:** Marc Baily and Nomi Bar-Even  
**Colour Selection:** Charlotte Minty  
**Interior Designer:** Charlotte Minty  
**Painting Contractor:** Flett Painters  
**Photographer:** Neil Pardington

**Colours Used:** Resene Bounce, Resene Crisp Green, Resene Foggy Grey, Resene Moody Lavender, Resene Soapstone, Resene Taupe Grey

**Products Used:** Resene AquaShield, Resene Enamacryl, Resene Lumbersider





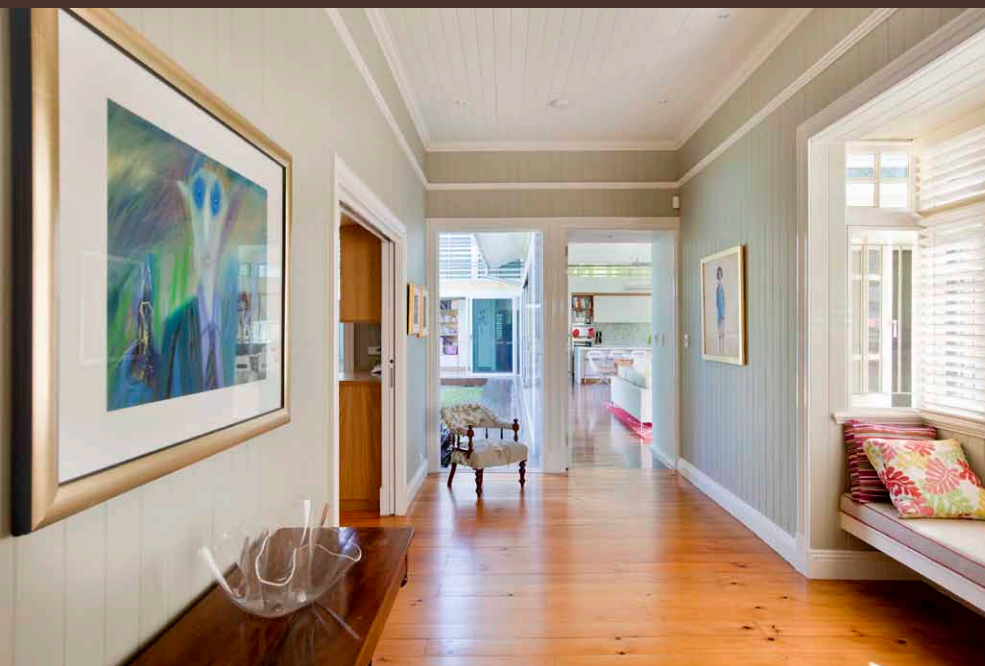
## Neulans House

This renovated family home uses colour to unite old and new architecture, allowing the modern and traditional to sit comfortably together.

Colour energises the light filled rooms. The soft green Resene Double Linen walls of the existing architecture create a sophisticated yet neutral background, while off white trims in Resene Half Joanna emphasise the existing decorative timberwork and the new architectural insertion. Bold colour, pattern and texture come together to create a contemporary family sitting room, while subtle tones

are used to harmonise and separate private zones within the house.

A strong red rug and soft blues in the upholstery form a striking contrast against the neutral background. Botanical prints are featured throughout the house; on upholstery and the sitting room wallpaper. Prints were used to generate texture, and create interior landscapes, in order to reference the strong connection the architecture holds with the exterior landscape.



**Architectural Specifier:** Push Architects  
**Colour Selection:** Coop Creative  
[www.coopcreative.com.au](http://www.coopcreative.com.au)  
**Interior Designer:** Coop Creative  
**Photographer:** Rix Ryan Photography

**Colours Used:** Resene Double Linen,  
 Resene Half Joanna  
**Products Used:** Resene decorative paints



 Resene Double Felix

Half  
Joanna

Double  
Linen







## Woodrow Drive

54 Woodrow Drive, Queensland



Woodrow Drive is a unique renovation of a grand scale, combining the architectural details of a classical 1930s era Queensland home with modern contemporary finishes of today. After a few months of design and ten months of construction, the house has evolved from a small two bedroom house to a large five bedroom family home that 'better relates to the Queensland outdoors'.

This gracious family home is a true jewel in Brisbane's inner-city. Offering the modern family everything they could dream of including chef's kitchen and butler's pantry, media room, open plan living spaces flowing out to beautifully landscaped grounds on 779 square metres with a back boundary of an impressive 33 metres wide.

The home was raised 1.05 metres and moved into position on the unusually shaped block. This created a large level grassed terrace and beautiful resort style pool area flowing out from the living spaces.

Raising the home created exceptionally high ceilings on both levels, over three metres in height. With the higher ceiling and the modern interior enhanced by the Resene Alabaster walls throughout, it is a perfect canvas on which to display art. The original house was painted an uninspiring cream colour commonly used in the 1930s. Blending into the other homes situated in the street, this house required a colour that was strong enough to command attention but wasn't overpowering.



Most of this weatherboard home was painted Resene Napa, with breaks of double strengths and deeper tones to add visual interest. Enhanced with natural stone walling, this home has immaculate street appeal.

The walls in the terrace and BBQ area were painted a deep Resene Double Napa on the rendered blue board, to contrast beautifully with the white pavers. A BBQ outdoor kitchen with mirrored splashback reflecting the pool was selected in a Caesar stone bench top and Polytec Caraway matching the Resene Double Napa walls perfectly. The Electrolux BBQ and stainless steel bar fridge gave an industrial edge to the space and complemented the paintwork perfectly.

Resene Double Napa was used for all the timber fencing, double strength due to the strong western sun in the late afternoon. This colour was the perfect choice as a backdrop for all of the planting of Bamboo, Yucca and Pandanus.

All of the rendered block walls were coated in Resene Double Masala, which set off the metallic metallic finish of the mailbox stainless plate, silver aluminium awnings, gate and Zinalume roof. With the large scale of the home from the street, the Resene Double Masala fence line and garage grounded the property and set off the large expanse of lawn. The result of this renovation was a stunning family home, of the finest finish and a great reflection of high-end design.

**Architectural Specifier:** Klinge Constructions and Developments  
[www.klingecd.net.au](http://www.klingecd.net.au)

**Building Contractor:** Klinge Constructions and Developments

**Interior Designer:** Louise Klinge

**Painting Contractor:** Q Paint

**Photographer:** Focus Films

**Colours Used:** Resene Alabaster, Resene Double Masala, Resene Double Napa, Resene Napa

**Products Used:** Resene Lumbersider, Resene Enamacryl, Resene TimberLock

Napa

Double Napa

Double Masala

Alabaster

 Resene Breathless





## Boland Residence

5 Dorset Road, Northbridge

To produce maximum impact within the budget, the exterior was coated with acrylic render and covered with Resene paints. While wanting something different, the final look still had to be sympathetic to its surroundings – as well as complementing the existing architectural elements of the old house.

I chose Resene Earlybird as it reflected tones in both the terracotta tiles of the roof and soft stripes ingrained in the sandstone flagstones.

The garage door, columns and corbels were painted in soft contrasting Resene Barbecue paint and metal work in Resene Blackjack, including the custom built balustrade.

The colour changes amazingly during the course of the day – from blue to brown. Love it!



Earlybird

**Building Contractor:** Jesmac Home Improvements

**Colour Selection:** Nicholas Harlow Design

**Interior Designer:** Nerida Nicholas

**Painting Contractor:** J+A Architectural Coatings

**Photographer:** Nerida Nicholas

Barbecue

**Colours Used:** Resene Barbecue, Resene Blackjack, Resene Earlybird

**Products Used:** Resene decorative paints

Blackjack

 Resene Boogie Wonderland





## Joy Kitchen Remodel

171 Grafton Road, Roseneath,  
Wellington

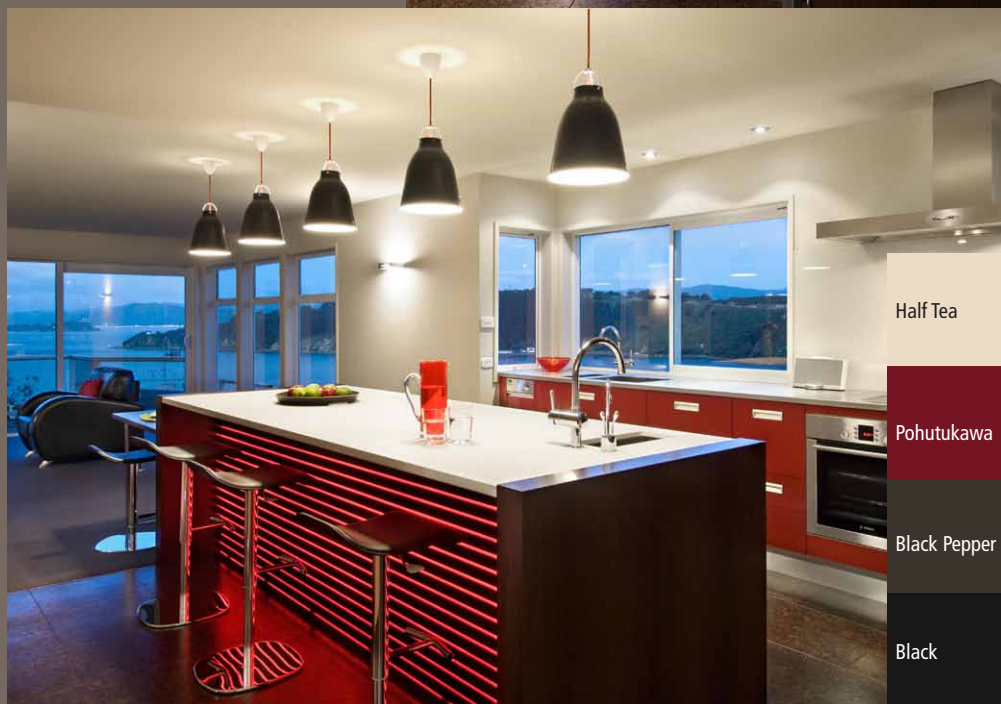
Remodelling a kitchen and removing walls to create an open plan area means looking closely at the spaces around it.


The colour palette may need to relate to existing colour schemes, the client's preference to colour - in this instance red - and introducing feature finishes, or even unusual lighting effects, can be enough to create an individual feel.

Dark-toned furniture is used in a retro theme throughout the house and accordingly cabinetry finishes are either dark Wenge veneer or a moody, back painted, merlot-coloured glass. The bench tops are a combination of textured stainless steel and engineered stone. The walls and splashback have been painted a matching neutral colour.

The scheme is complete with a striking backlit, front panel made from Laser grain and backlit with red LED lights.

While the backlighting continues the use of the client's favourite colour, the glowing effect also gives the kitchen a futuristic, floating air. Lighting is emphasised in other ways, too. Black enamel pendant lights and red flex line up over the island, adding their own dramatic touch to the kitchen.



 Resene Double Schooner

**Colour Selection:** Pauline Stockwell Design  
**Interior Designer:** Pauline Stockwell Design  
**Photographer:** Paul McCredie  
**Other Key Contributors:** Hughes Joinery

**Colours Used:** Resene Black Pepper, Resene Half Tea, Resene Pohutukawa  
**Products Used:** Resene decorative paints





## Okuku Residence

34 Foothills Road, Rangiora



Eighth  
Fossil

Fossil

Grey Olive

Half Fossil

This Oamaru stone house is situated close to the Canterbury foothills on a lifestyle block with a lovely view towards paddocks and mountains.

The house was built in 1997 and it was ready for an update; especially the kitchen which looked tired with old fashioned cupboard doors and bench top. In the corner was a walk-in pantry that took away most of the kitchen space. Beside the pantry was a large floor to ceiling oven unit leaving little bench space. The kitchen lacked storage because the right wall of the kitchen had a timber veneer wine rack with diagonal shelves, an open timber triangular shelving unit and a white freestanding fridge.

Because the budget was small the owner wanted to retain the terracotta floor tiles, the existing carcass, rimu bench top and tongue and groove timber at the front side of the kitchen bench. The client had replaced most of the appliances in recent years with good quality equipment, so they were in good condition and could be reused in the new kitchen. The requirements were to change the colour of the cupboard doors and to add a new bench top and pantry, to design additional storage with extra drawers for pots and pans, a new sink, tap and hardware.

**Building Contractor:** Brent Johnson Joinery Ltd

**Colour Selection:** Nanda Poort-Rammers [www.twinriversinteriors.co.nz](http://www.twinriversinteriors.co.nz)

**Interior Designer:** Nanda Poort-Rammers

**Photographer:** Amanda Sinclair, Radiate Design

**Colours Used:** Resene Eighth Fossil, Resene Fossil, Resene Grey Olive, Resene Half Fossil

**Products Used:** Resene SpaceCote Low Sheen, Resene Lustacryl

The design proposal included a colour scheme in Resene Fossil and Resene Grey Olive to fit with the rest of the colour scheme in the room. The bench top was replaced with a new green soapstone coloured melamine that fitted within the restricted budget.

The cupboard doors were replaced with new panelled country doors with a Resene Fossil finish with stainless steel oval formed door knobs that enhance the stainless steel appliances. The back wall was painted in Resene Grey Olive and has a glass splashback in the same colour and Resene Fossil coloured wall cupboards were added for extra storage. The light soft colours make the space look much bigger.

Against the right wall are floor to ceiling cupboards with colonial cornices along the top. The tongue and groove panelling at the front of the bench was sanded and painted in Resene Fossil. The rimu varnished bench top was sanded and finished off with commercial flooring oil that intensified the beautiful wood grain of the wood.

The result is a contemporary spacious functional country kitchen with clean lines and neutral colours that won't date too quickly.







## Hill Residence

80 Orakei Road, Remuera

The Hill Residence occupies a prominent site on Orakei Road on the northern slopes of the Auckland suburb of Remuera. Originally an early 1900s worker's cottage, the property was transformed into a substantial three level home in the early 1990s, following a renovation of the existing building and a major extension.

In early 2010, a second renovation was undertaken, including a new interior design and fit-out for the formal areas of the home, and a new exterior colour scheme.

Previously painted in pale yellow with cream details and a blue roof, the client brief was to brighten and modernise the exterior, but to avoid a flat and plain appearing white effect.

The resulting exterior scheme seeks to bring a chic, classic and refined elegance to the home. The very subtle colour variation between the Resene Barely There weatherboards and the Resene Alabaster details in trims, window frames, balustrades and eave facings, offset by the Resene Nero front door, garage

door, front veranda decking boards and spouting, and the roof painted in Resene Grey Friars, has created a fresh and stylish look, greatly enhancing the street appeal of the home.

In addition, the new colour scheme has highlighted and made eye-catching features of the very attractive architectural details of the house, including the dormer windows, front veranda and upstairs balconies.

The project was completed in two stages, with the interior work completed during the April to May 2010 period, and the exterior work completed by mid-June 2010.

Occupying such a prominent site on Orakei Road, the exterior transformation of the house has been highly visible. Since the completion of the project, the owners have received a surprising number of requests from passers-by for the paint brand and colour names. In their opinion, there can be no better validation of the exterior colour selections and design created for their home.



Barely  
There

Alabaster

Nero

**Architectural Specifier: Monochrome Inc. Interior Design**  
[www.monochromeinc.com](http://www.monochromeinc.com)

**Colour Selection: Monochrome Inc. Interior Design**  
**Interior Designer: Monochrome Inc. Interior Design**

**Painting Contractor: The House Painters**

**Photographer: Dan Trotter, Studio Q**

**Colours Used: Resene Alabaster, Resene Barely There, Resene Nero**

**Products Used: Resene Sonyx 101, Resene Super Gloss**

 Resene Secrets







## Aldersgate Road Reclad

57a Aldersgate Road, Auckland



Behind every storm cloud is a silver lining. Suffering the tragedy of finding out the home was leaky with the large expense of a re-clad and a complete internal renovation of the 12 year old house, the silver lining was the opportunity to revamp the colour scheme and presentation of the house.

The starting point was the external colours of the new materials. The concrete grey Eterpan panels work well with the New Denim Blue window joinery juxtaposed with a cedar wood finish on the front doors, garage and balustrade plus 'eyebrow' soffits. Internally the floor finishes provided a strong base of colour to work from.

The carpet chosen was New Zealand made 'Hilton' by Irvine International. 'Tundra' is a warm charcoal grey.



**Architectural Specifier:** Houston Architects  
[www.architects.org.nz](http://www.architects.org.nz)

**Building Contractor:** Gleeston Builders

**Painting Contractor:** Res Painting Contractors

**Photographer:** Houston Architects

**Colours Used:** Resene Felix, Resene Half Felix, Resene Half Tea, Resene Tea

**Products Used:** Resene decorative paints

The colour provides a connection to the exterior and the flamed basalt forming the border to the balconies off the living room and working as a hearth to the gas fireplace. The basalt tiles link with the external granite tiles 'Padang Grey'.

Internally the main wall colours are Resene Tea in the living room and Resene Half Tea elsewhere to walls and ceilings. Feature walls of Resene Half Felix and Resene Felix were chosen for their ability to show off paintings and other finishes in the vicinity. The interior has been carefully finished with drapes to accent these wall colours and other finishes to suit.

Felix

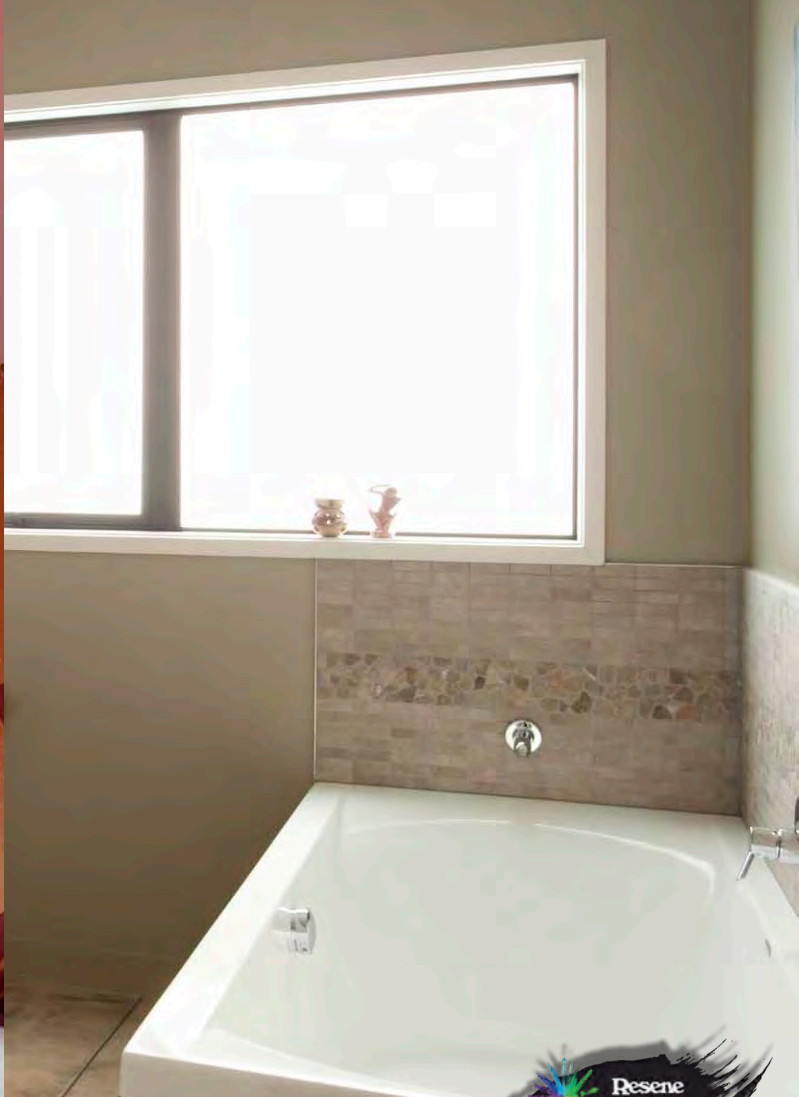
Tea

Half Felix

Half Tea

 Resene Koru









## Corbett/Horner Build

594E Hamurana Road, Rotorua

My clients love colour and weren't afraid for me to use it. Situated on a lifestyle block in Hamurana, which is located on the green belt of Rotorua, the property has stunning views of Lake Tarawera. The home has a lot of windows that capture both the views and the natural light.

The inspiration for the colour scheme chosen was autumn. The area where the property is located is surrounded with trees. Therefore the warm earthy tones of autumn resonate with the location of this property.

Resene Akaroa is the predominant wall colour throughout the home. It was chosen for its green base and neutrality. It also aids in keeping the home feeling spacious and light.

Resene Chelsea Gem features in the kitchen. This tone harmonised perfectly with both the beautiful Blackwood bench tops and the Resene Akaroa. It is also a great 'food' colour.

Resene Hot August was used in the master bedroom. The homeowners desired the use of a rich tone in their bedroom. The tone of Resene Hot August worked beautifully with the burnt orange and maroon colours of the Warwick Koeda silk fabric used for the drapery in this space.

Resene Ventura features in the two spare bedrooms. Resene Ventura has a lot of depth of colour. It worked perfectly with the dark olive tones of the flock Warwick Hanami fabric used for the drapery and blinds in these two spaces.

Resene Grey Olive was used in both bathrooms. This colour harmonised nicely with the overall colour palette chosen and the earthy tones of the tiling, island stone and textured concrete also present in these spaces.

The result is a home that the owners hate to leave!

**Architectural Specifier: Gerald Stock Architect**

**Building Contractor: Ronal Tissink Builders**

**Colour Selection: Donna Morrison, Material Girl NZ Ltd [www.mgirl.co.nz](http://www.mgirl.co.nz)**

**Interior Designer: Donna Morrison**

**Photographer: Fullframe – Craig Robertson Photography**

**Colours Used: Resene Akaroa, Resene Chelsea Gem, Resene Grey Olive, Resene Hot August, Resene Ventura**

**Products Used: Resene SpaceCote Low Sheen**



Akaroa

Chelsea Gem

Grey Olive

Hot August

Ventura

 Resene Half Rickshaw



## Harlequin Fabric

64 Cannington Road,  
Dunedin

Jacksons  
Purple

Galliano

Avant  
Garde

Black

Solitaire

Neva

Arapawa

Roadster

Daredevil

Mandy

Bullion

Eastern  
Blue

Belladonna



This fabric project was completed using thirteen Resene colours as follows; Resene Jacksons Purple, Resene Galliano, Resene Avant Garde, Resene Black, Resene Solitaire, Resene Neva, Resene Arapawa, Resene Roadster, Resene Daredevil, Resene Mandy, Resene Bullion, Resene Eastern Blue and Resene Belladonna.

Approximately 200 trapeziums measuring eight by seven centimetres were designed in three recurring sequences on paper then painted onto standard cream calico fabric using an artist's brush. A series of metallic and coloured braids were machine sewn dividing each coloured trapezium from the other. The entire process to completion took about 25 hours spread over several weeks.

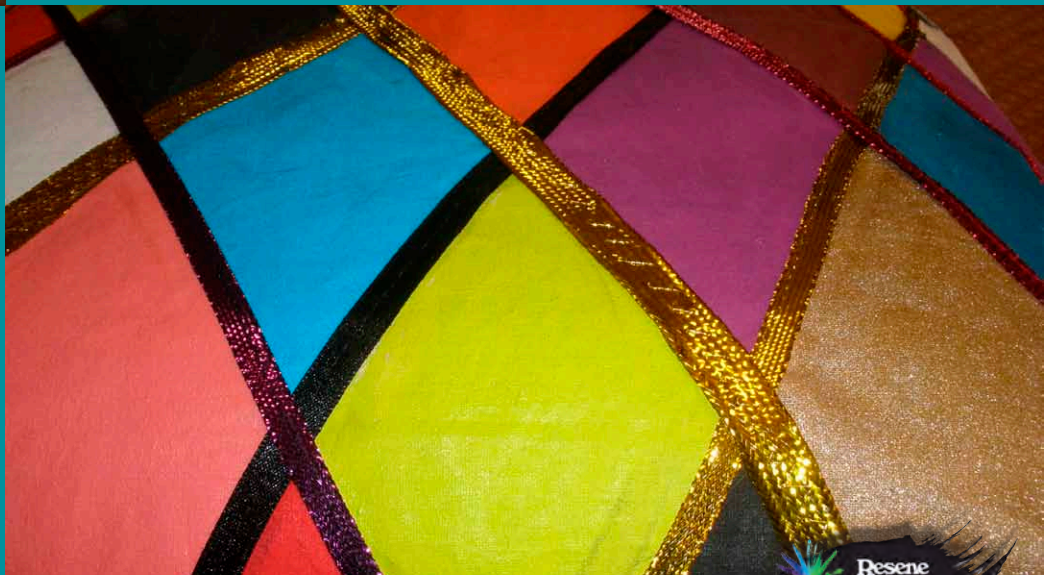
The project was inspired by the harlequin pattern which is derived from a character in a traditional pantomime wearing

diamond shaped pattern which is French in origin. I was inspired also by the 2010 Resene News which included a wonderful project using recycled Resene paint to produce an innovative marbled furniture upholstery. As a child my parents allowed me to paint some aspects of domestic interior and my father took me to art classes. So I have always had an interest in creating individual and original interiors.

Looking beyond this small scale project I could see it having application in either corporate, domestic or commercial contexts. This could extend to wallpaper, curtain and upholstery fabric or customised projects by artists involving scaled up versions of a pattern as feature walls for a variety of clients.

**Designer: Rachel Ovens**

**Colours Used:** Resene Arapawa, Resene Avant Garde, Resene Belladonna, Resene Black, Resene Bullion, Resene Daredevil, Resene Eastern Blue, Resene Galliano, Resene Jacksons Purple, Resene Mandy, Resene Neva, Resene Roadster, Resene Solitaire  
**Products Used:** Resene Lumbersider, Resene Enamacryl Metallic







## 'On The Wall'

64 Cannington Road, Dunedin



Colour in my world has always been important. Orange has always had a place in my heart. When I was a thirteen year old girl my grandmother knitted matching jumpers and Tam-O'Shanters in New Zealand wool for our overseas travel to Persia and India. My set was orange and Mum's was pink.

My family have had a very long association with Resene in Dunedin, approximately 25 years in fact, spanning my husband's architectural career thus far. We had recently moved house from our beloved home on Dunedin's main George Street. The external paint scheme of that home, an architecturally modernised villa, was vibrant use of Resene Red Stage for the main external body, trimmed with Resene Black Bean and a cream and a tinted terracotta mix for the baseboard.

Our new much loved home is a wonderful 1950s home, all done in neutral hues except of course for the 'Barbara Cartland' pink bathrooms. I have to confess I couldn't survive for long without a fix of vibrant orange and so this project came

to be. Vibrant orange Resene Daredevil and deep Indian blue Resene Arapawa were the two Resene colours, tinted into Resene Lumbersider that I decided to use. I enjoyed working on this project as it was a chance to go wild in my own manufactured environment.

Resene Daredevil was applied in one thick coat on existing walls which were mainly window. The colour looked very effective juxtaposed with existing cream ceiling and white wooden trim. Resene Daredevil was applied at the junction of ceiling and wall using a fine artist's brush. Resene Arapawa was hand-painted on the cream coloured thermal drape side of the curtain which I had reversed to give the Resene Arapawa a crisp and light contrast background.

Daredevil

Arapawa

**Architectural Specifier:** Michael Ovens Architect  
**Colour Selection:** Rachel Ovens

**Colours Used:** Resene Arapawa, Resene Daredevil  
**Products Used:** Resene Lumbersider

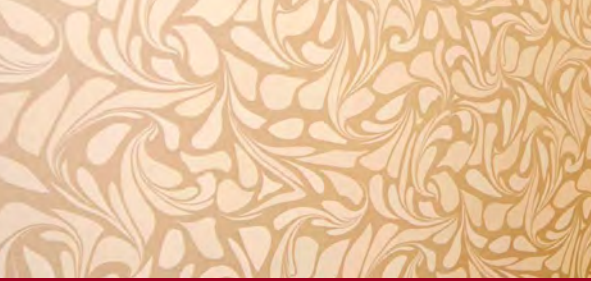
Special Judges' Mention for Bold Colour Use











## Pt Chevalier Apartment Refurbishment



The client had purchased a tired 1970s duplex apartment that needed a complete overhaul to bring it to life. His brief was for something modern and stylish, but not minimalistic. He also wanted a European sophistication, bold accents and a comfortable functionality. The spaces did not flow and relate well to each other so room uses were reconfigured. A new kitchen, bathroom and ensuite were to be designed for the reconfigured spaces. The exterior of the house also needed updating but had to connect with the brickwork that was to remain intact.

The exterior colours were updated to be more contemporary; the colour scheme was kept very simple and connected the retaining wall and fence to the scheme.

To begin the interior refurbishment, the apartment was gutted and walls knocked out to open up the living areas. Bathroom spaces and living areas were reconfigured to provide good spatial flow by the architect. A new kitchen, bathroom and ensuite were designed into the newly configured spaces, and an overview of lighting, flooring, colour, soft furnishings and furniture were pulled together to create a sense of contemporary sophistication.

A new entrance doorway was installed to add light into the stairwell. The entrance featured contemporary paisley wallpaper in shades of white and metallics. The wallpaper played with a traditional design in a quirky way, creating a sense of surprise in what would have been an ordinary space.

Upstairs, with the wall knocked out, the spaces had a direct relationship to each other and were treated as one area.

The kitchen was kept simple and understated, and a custom designed

computer cupboard was built to multifunction as a working space and when it was closed off with sliding doors, the lighting on the open shelving that housed décor created an ambience and soft glow.

A black and white theme was a pivotal design direction for the new kitchen, dining and living areas. Strong geometric pattern combined with texture in the fabrics and soft furnishings, creating a solid statement of the 'wow' factor. Touches of red were introduced in a quirky fashion in the artwork and small items of décor.

Whitewashed oak wooden floorboards were laid, the natural warmth of the oak coming through the colour. Resene Quarter Parchment was used on the walls, chosen for its warmth, even though it reads as an off white. The black and warm-white theme was carried through to the dining area, with a black extendable oak table, and fully upholstered chairs in a heavily textured off white fabric. A luxurious crystal chandelier hangs over the table and sheer flowing white drapes with a contemporary rod and eyelet heading add to the quirky sense of surprise, creating an eclectic look.

The bedrooms were dark and dingy so the Resene Quarter Parchment was carried through to lighten and warm them up. Fabrics and furniture were chosen with strong accent colours and pattern and texture. The look and feel is carried through to the bathrooms with strong accents of black, red and silver cast into a neutral scheme throughout. Attention was given to detailing in every area throughout.

**Colour Selection:** Amanda Neill [www.designworxnz.co.nz](http://www.designworxnz.co.nz)  
**Interior Designer:** Amanda Neill  
**Stylist:** Debbie Neill  
**Photographer:** Nathan Koppens, First Light Photography

**Colours Used:** Resene Double Parchment, Resene Parchment, Resene Quarter Parchment, Resene Wan White  
**Products Used:** Resene decorative paints

 Resene Code Red

Quarter Parchment

Wan White

Double Parchment







# Devonport Villa





The client had purchased a four bedroom villa with large proportions. With white walls throughout, and very little existing furniture that the client wanted to keep, it was a blank canvas for design work in all areas of the house. The client wanted to retain the integrity of some of the villa features, yet create a contemporary elegance incorporating a quirky eclectic feel that could include reference to other eras. They wanted a sense of luxury and surprise incorporated into the design.

With the entire house being white, and the existing black painted floorboards and grey carpet, a black and white base to the colour scheme was layered with accents of red and aqua, mixed with metallic silvers and charcoals. The starting point for this colour scheme was a painting the client had for the living area which had a soft touch of aqua in it.

The existing kitchen was dark and heavy and required a complete redesign, but had to fit with the existing large scullery area in behind it and incorporate all the modern storage within. The new design brought together pattern, texture and light. The cabinets above the hobs were printed with graphics which incorporated a large scale traditional pattern and a touch of soft aqua blue. The main bench top and cabinetry were kept white, to connect with the rest of the house, and an asymmetrical feature bench top in Petra Grigio marble was added to balance the asymmetry of the high wall cabinetry on the back wall. This high wall cabinetry was kept open on the right, to visually connect with the scullery.

The splashback tiles on the back wall and tiles on the back of the island were heavily textured and played with the light to create a sense of interest and movement. The kitchen and scullery floor was also replaced with quirky tiles. To complete the area, high gloss black glass lights were hung over the island.

The dining family area was open plan to the kitchen. A large American ash dining table with a charcoal stain was added with the fully upholstered dining chairs, sitting on a custom designed rug.

Contemporary cabinets in Resene Black White sat on either side of the fireplace which had the hearth replaced in black Basalt and a new gas fire retro-fitted into it. Three contemporary chairs and small black leather and chrome side tables gather around the fireplace sitting on a custom designed rug. All the fabrics and rugs pulled together the aqua, black and white colour scheme. Each chair around the fireplace was upholstered in a different luxurious velvet fabric, pulling together the traditional and retro elegance.

The formal lounge connected to the kitchen area and the back patio area of the house. The furniture was custom built for comfort and luxury. The fabrics incorporated velvets and texture, and the custom made rug added a high silky sheen to the room. Red was introduced into this area along with the aqua and the black-white base. A black Basalt hearth was overlaid on the existing hearth, and the client's existing entertainment cabinet was recoloured to work with the scheme. A large traditional decorative silver framed mirror reflects back to the kitchen connecting the areas.

The entrance hallway had large proportions. New hall lights were added that were made from a contemporary medium of black acrylic, yet were a modern take on a traditional chandelier. The pattern of these lights was reflected in the design of a custom made hall runner., the scale of pattern oversized to enhance the proportions of the hallway. A touch of red was added in to bring interest into the colour scheme, you can see the formal lounge at the end of the hallway and the red leads you in. There is a real sense of an eclectic mix of scaled and over the top luxury in this space.

The master bedroom continued the theme. A large white painted wardrobe was built into the room to look as if it has always been there. A feature wall was added in the way of a painted frame made from villa architrave applied to the wall behind the bed, this was wallpapered inside the frame with a black and silver flocked striped wallpaper.

The windows were voluptuously treated with the use of dark charcoal fabric with a metallic silver over scaled traditional pattern. They were hung higher than the architraves to enhance the sense of scale in the room. A long shaggy silver custom made floor rug adorned the floor and a 1600mm long ottoman was custom built for the bay window area.

Lampshades were custom made in a heavily textured fabric that connected the copper wood colour of the client's existing bedroom furniture and the new colour scheme. The existing fireplace was completely out of character with blue tiles, so it was covered over, rather than demolished, with a more in keeping surround and a black Basalt hearth was overlaid.

The existing bathroom, while simple and fresh, had no sense of luxury. A feature wall of tiles was added which echoed the patterned metallic theme. Under-floor heating was also added under the new floor tiles. A new bathroom cabinet, mirror and lighting completed the changes here. The decorative pattern adorns the cabinetry and echoes the feeling of the tiles.

Off the hallway is a bay windowed room that was converted into a home office. A Cape Cod style cabinet was built into the wardrobe space, and white painted modern office furniture was added, as well as soft seating and a custom made rug.

**Colour Selection: Amanda Neill**  
[www.designworxnz.co.nz](http://www.designworxnz.co.nz)

**Interior Designer: Amanda Neill**

**Stylist: Debbie Neill**

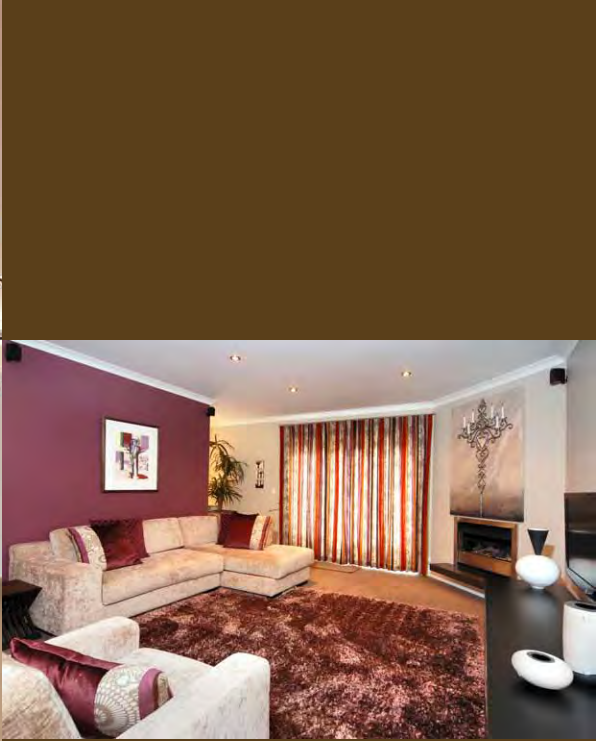
**Photographer: Nathan Koppens, First Light Photography**

**Colours Used: Resene Black White**

**Products Used: Resene decorative paints**

Black  
White







## Greenhithe Manor Refurbishment

Set in leafy Greenhithe, this large family manor called for a total refurbishment to update their look. With the two-storeyed brick exterior housing a space for a new open plan kitchen, a dining and living area, five bedrooms, media/library space, and a pool room, there was a large scope to play on proportion and scale. The clients wanted an uncluttered luxury to show through the design, yet they didn't want a grand pretentious space, but a down to earth home where their two young children could grow up in warmth and comfort.

The interior refurbishment took its design direction from a paint colour, Resene Finn, that was existing when the clients moved into the property. This colour was strong, yet warm and with a lot of depth. It was partnered with a neutral Resene Tea and this combination of complementary colour was the starting point for the layering of the colour palette for the flooring, new kitchen, window treatments, furniture and décor.

The client also had existing furniture in a similar colour to Resene Finn, and while these were eventually replaced the design had to incorporate the transition to a new lounge quite gradually. The look was kept simple and uncluttered. Cushions were added into the new furniture that incorporated the fabric of the window treatments with the natural texture of country linen and the plush

sheen of velvets to add a sense of luxury. The colours pull the scheme together. A fireplace was built into the corner with a cantilevered granite hearth. The rug was custom designed and again, used a combination of the colours to pull the scheme together.

The footprint of the kitchen was governed to a degree by the central wall dividing the kitchen and living area. To create more storage and space, part of the hallway behind the kitchen was blocked off and a scullery area was created in the new space. The key focal point of the kitchen was the natural granite waterfall with its large embedded river stone look. It was designed to flow over the side of the bench in a Dali-esque manner, with an organic feel to it. It is highly visible as you enter from the main door, and the play on scale and height adds interest into what would otherwise be a very neutral kitchen.

Another key feature of the kitchen was the lighting, designed into negative detailing; it adds an ambience and warmth to the area. The hanging pot rail, designed specifically for the island, maintains a link to the country past, as does the chandelier over the dining area. Much of the new hard furniture is dark wood with aged waxed finishes to give it a time honoured look. Its solidness and size add weight to the design. Attention was given to detail and the clients

wanted ample storage and a place for everything.

Upstairs, the master bedroom required new bed linen and window treatments to tie in with the existing wall colour. It was freshened up and lightened. A new sense of proportion was gained by taking the window treatments higher and outside the architraves.

The room that was set aside for a media room/library space, required a whole new look. Carpet, window treatments, and wall colour were changed to flow from the rest of the house. The fireplace was taken out and reclining furniture added to relax into. Black out drapes enabled the clients to watch a movie day or night. The floor rug added texture and sheen to the space.

The other half of the media room was behind a half wall and housed two very comfortable traditional chairs. A new book cabinet was built which created a quiet reading space.

The remainder of the property, pool room, bedrooms and bathrooms were tweaked to follow through the new updated scheme. Walls were painted, new cabinets and blinds added.

The clients were very happy with the redesigned spaces and felt that the brief had been achieved and a long-term family home created.

**Building Contractor:** Knowles Homes  
**Colour Selection:** Amanda Neill [www.designworxnz.co.nz](http://www.designworxnz.co.nz)  
**Interior Designer:** Amanda Neill  
**Painting Contractor:** North & South  
**Stylist:** Debbie Neill  
**Photographer:** Nathan Koppens, First Light Photography

**Colours Used:** Resene Finn, Resene Parchment, Resene Quarter Tea, Resene Tea  
**Products Used:** Resene decorative paints

Quarter Tea

Finn

Tea

Parchment

## iPAD Porkapa Beach

Coasts Road, New Plymouth

The iPAD™ is a true kitset pad designed to cover a range of options.

It can be grouped as a series of pavilions to form larger accommodation if required.

A single iPAD™ totals 50 square metres with decks of 55 square metres and retails in New Zealand for \$125,000 (exc GST). Various external cladding and colour options are available to suit individual taste and context.

This seafront iPAD™ is the holiday home of two Californian surfers who ride the Taranaki waves several times a year when they escape from Sausalito.

It consists of a single module with a guest suite accessed across a partly covered deck area.

The natural timbers are stained to evoke a subtle weathered seaside appearance, and it nestles sensitively on this sometimes harsh coastal environment.

The iPAD™ is the ultimate designer pad – versatile yet affordable.

Bokara  
Grey

Raincloud



**Architectural Specifier:** Architex NZ Ltd  
[www.architex.co.nz](http://www.architex.co.nz)

**Building Contractor:** Kuriger Builders Taranaki Ltd


**Interior Designer:** Architex NZ Ltd

**Painting Contractor:** Kuriger Builders Taranaki Ltd

**Photographer:** Architex NZ Ltd

**Colours Used:** Resene Bokara Grey, Resene Raincloud

**Products Used:** Resene decorative paints

 Resene Magnum







## iPAD Longbeach Bay

### Marlborough Sounds

The iPAD™ is a true kitset pad designed to cover a range of options; it could be a one bedroom holiday home, secondary dwelling, granny flat, office, studio or resort unit to name but a few.

This single module iPAD™ is the holiday home of family winemakers Allan and Cathy Scott on a waterfront site in the Marlborough Sounds.

The dark colours blend seamlessly into the blackened Ti-tree and native bush backdrop.

Of particular note is that the iPAD™ can be either manufactured off-site and easily transported to its final destination, or shipped as a kitset and erected on site by a licensed contractor.

The iPAD™ is the ultimate designer pad – versatile yet affordable.



**Architectural Specifier:** Architex NZ Ltd  
[www.architex.co.nz](http://www.architex.co.nz)

**Building Contractor:** Bowman Developments Ltd

**Interior Designer:** Architex NZ Ltd

**Painting Contractor:** Bowman Developments Ltd

**Photographer:** Architex NZ Ltd

**Colours Used:** Resene Nero

**Products Used:** Resene decorative paints

Nero

 Resene Emerge





## The Shearer Residence

142 Parkway Avenue, Hamilton South



This New South Wales parcel of land is approximately 570 square metres in size. It is a classic 'Californian Bungalow' built circa 1937 and features Art Deco period architecture both inside and outside the home.

The home is located in a 'between the wars' heritage listed 'Garden Suburb'. Such suburbs are of heritage significance and are located throughout Australia.

This site is regulated under Newcastle City Council's – Newcastle Development Control Plan 2005. In particular, The Hamilton South Design Guidelines (section 8). This home is neighboured on both sides by occupied similar styled homes and a recent second storey development by one of these homes had caused a considerable imposition on the clients as their privacy to their rear family room and backyard had been compromised.

As the client's land parcel is inherently small and is further reduced by the development of a sympathetic family room and garage, laundry and studio additions, they sought permission to undertake landscaping works as close to their neighbouring boundaries as possible.

The site has the advantage of a rear access garage and carport. Appropriate Council permits were obtained so that materials and spoil could be safely stored off site on a large rear pedestrian grassed verge. No vehicle or pedestrian traffic was interrupted during the entire construction and handover phase.

The clients are both professional people who are time poor. There are no children (aside from their much loved pet labradoodle) and the husband works from a rear studio that is located atop the brick garage.





The design rationale was to provide a robust and low maintenance pool, hardscape and pavilion area that was clean and sympathetic to the period of architecture existing in and around the home. A simple small and elegant concrete and mosaic tiled swimming pool was proposed with an over scaled large block and tiled water wall to give the illusion of space in a small scaled residential yard. The pavilion was also over scaled and styled on Ludwig Meis van der Rohe's 'art deco' flat roofed Barcelona concept. This design was constructed for the Farnsworth family in 1946. It is described as an 'architectural poem' and appears to float on air. The designer used this methodology to blur the height of the pavilion and use such architectural spirit to further push the illusion of greater space than that which actually prevailed.

Strong curved and lineal design intent was expressed in the design. The juxtaposition of the straight lines of the pool and over scaled privacy water walls with the compound curved shapes of the pavilion provided an interesting blend of the two mediums. A striking focal feature curved wall in vertical slatted square timber batons, painted in orange emphasises the strong curves and is located in the pavilion. These curved walls provide a hidden storage area, close to the back gate and ideal for the recycle and refuse bins. Bore water automated irrigation and infrastructure and some necessary pool maintenance equipment is also located there.

Located within the pavilion is a small kitchen area and town gassed barbecue. The kitchen cupboards are constructed from marine grade multi-layered form plywood. This wood was recycled from site formwork, cleaned and painted in dark charcoal (existing house trim colour) and clad in thin timber slats. These slats were also reused batons that were left over from cladding the underside of the acrylic sheet roofing to the pavilion. The concrete tops to the kitchen benches and dining table were made from 'off the form' concrete – later polished to expose the black small aggregate stones located within. A recycled secondhand sink and taps were used in the kitchen bench and hot and cold water lines run during construction.

Large circular concrete steps were 'formed up' to again provide over scaled access to the pavilion. These were simply painted in a non-slip charcoal paving paint. The entire hardscape is a non-slip external grade plain vitrified tile in rectangular form (600mm x 300mm). These tiles are adhered to an engineered designed 120mm thick concrete sub-base.

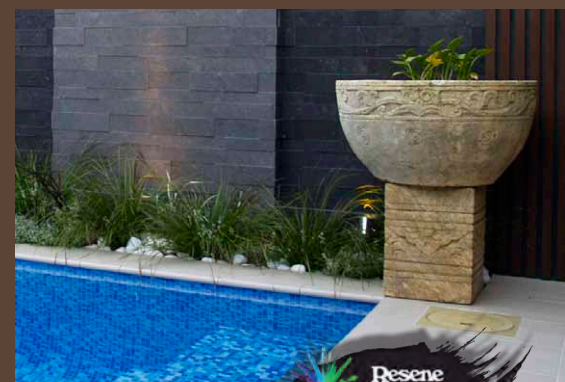
A small fridge has been integrated into the kitchen cupboards, and a flat screen television monitor is placed upon the wall. A lounge area and hanging cane basket chair assure that all creature comforts have been taken into account for the clients.

An opened wall separates a secreted side nook that divides the pavilion from the back of the house. This wall was designed to provide delineation of the pavilion, but not be obtrusive. The designer included a skeletal Mondrian' wall that also provides infrastructure for

the heavy concrete formed dining table. Four irregular and random 'slotted boxes' are expressed 100mm from the wall face and painted in the different colours that have been utilised throughout the design.

The small nook has a subtle Japanese 'Kezu' pot within it. It is placed in front of a baroque styled cor-ten rusted steel wall feature. This feature is offset from a strong coloured wall by 100mm. An overhead low voltage light provides interesting shadow play on the wall behind both objects at night.

A rhombus shaped artificial lawn has been inserted strategically within the hardscape tiling to break up the simple pattern and soften the area. The artificial lawn sits on a graded granular medium of packing sand, cement and sharp sand. As the clients have a much loved medium sized family dog, it was necessary to provide a portion of the storm water infrastructure under the artificial lawn. The dog can use this lawn to expel liquid waste that percolates, and is later flushed away through a stormwater sink (by a lawn pop-up sprinkler system). The bore water is used through the pop-up sprinklers. This method has ensured that the artificial lawn area has no odour or unpleasant surprises to clients and others walking on the area.





An existing carport was cut back approximately 1.8 metres to allow greater space to the area. This allowed for the addition of a spa bath to the pool zone by a tiled weir. A pump room was designed to span both the spa area and the existing carport. This provides ready access to necessary pool infrastructure and equipment as well as providing a further tiled wall feature adjacent to the water wall area.

The pool is tiled in a five mix blue based glad mosaic (20mm x 20mm) – 20% of each of the five blue tile groups make up the bespoke internal pool tile pattern.

The water walls are waterproofed besser blocks and clad in a porcelain tile. The wall is supplied with water from the pool that falls down the tile face and then into a holding trough, before being returned back into the pool. 'L' forms are expressed onto the walls with offsets of 150mm. These offsets are then under lit with strip LED lighting. The water wall is also 'up lit' with LED lighting to exaggerate the Mondrian pattern found in the tile setting. A small low level garden has been placed in front of the water wall trough to secrete it from view.

The 'L' form expressed walls are continued on into the pavilion area and again under lit with strip LEDs. All LEDs are remotely controlled and are colour variant. All lights are coloured in unison.

A small segregated side entrance to the home has been included in the eastern wall design. Again, stepping out of the wall to this area in a contrived modernist shape to a depth of 150mm provides interest and framing of bespoke baroque bronze sculpture of the ancient Greek Goddess, Diana the Huntress. Lighting to this area is also run in conjunction with all other wall lighting ensuring a consistent selected colour is achieved throughout the design. Adjacent to the bronze statue a modern play on Mondrian is seen with four separate tiled boxed placed upon the wall. Three of them expressed off the wall and one 'let in' and back lit.

Soft planting to this area was requested by the clients to be tough, hardy and requiring little maintenance. A selection of exotic grasses and ferns were selected with repeat and similar planting.

All garden areas were connected to the existing automated bore water system by time-released solenoids and under soil 'drip eze' irrigation piping.

This design was provided as a result of lengthy discourse with the clients so that their vision and dream of a private and relaxing backyard could be achieved and their former private life returned.

**Architectural Specifier:** Darren Shearer [www.shearmagic.com.au](http://www.shearmagic.com.au)

**Colour Selection:** Darren Shearer

**Pavillion, Pool, Hardscape Engineering:** Robert Barker, Barker Harle Engineers

**Photographer:** Robert Barker

**Colours Used:** Resene Foundry, Resene Hyperactive, Resene Secret Garden

**Products Used:** Resene SpaceCote Low Sheen, Resene Zylone 20

Hyperactive

Foundry

Secret Garden





## The New Black

Wairiki Road, Balmoral

The brief was to dramatically transform a boring beige master bedroom with the use of colour, in a home decorated in a warm minimalistic style, already with Resene Black White on the walls in the living areas and hallway. A dramatic sense has been created by using Resene Black on the walls and Resene Bianca on all the trims. The colour choice has restricted the room from becoming overly feminine, something common in bedrooms shared by both sexes, despite the use of floral printed accent fabrics. Florence Broadhurst 'Japanese Floral' curtains add a touch of glamour to the transformation, where off cuts were put to good use to make a lampshade for another room.

Old with new is confidently mixed, a bold red side table and a central pendant light, both share touches of Resene Bright Red which adds a splash of bold colour to the mostly monochromatic palette. Mismatched side tables show off the couple's eclectic style, the retro chair was an internet bargain while the lamps are by kiwi designers, Workroom.

The homeowner says "While I love design I am also a bit sentimental and my two favourite objects are both pieces of furniture from Grant's family, a glory box and a dresser both in our bedroom. I love the simple and elegant detailing on both piece and am overwhelmed with the amazing result, and how the designer has given the room a modern but timeless appeal, while working with family heirlooms that have sentimental value."



Bianca

Bright Red

Black

**Colour Selection:** LeeAnn Yare  
[www.leeannyare.co.nz](http://www.leeannyare.co.nz)  
**Interior Designer:** LeeAnn Yare  
**Photographer:** Larnie Nicolson

**Colours Used:** Resene Bianca, Resene Black, Resene Bright Red  
**Products Used:** Resene SpaceCote Flat, Resene Lustacryl, Resene Enamacryl





- Broom
- Bondi Blue
- Pink Panther
- Bianca
- Curious Blue

At Home  
 SCANDINAVIAN STYLE  
 LIVING RETRO  
 OLD NEW  
 scandinavian living  
 scandinavian modern  
 apartment living  
 At Home  
 SCANDINAVIAN STYLE  
 L.A. LOFTS  
 FASHION DESIGNERS • At Home



## Something Old, Something New

### Auckland Home Show

One of five designers selected to create a designer room at the Auckland Homeshow 2009, this room was created around the brief 'Quirk it up, a different way of living. Create an interior setting relative to the home environment that challenges the norm and inspires the average Kiwi into thinking outside the box.'

Revamp, reuse and up-cycle what you've got. Don't spend a fortune updating your décor, create a whole new look by being creative with what you already have, and help save the planet at the same time. It's fashionable to be frugal! One room, one weekend, one easy makeover, shop at home and reinvent yourself using what you already have. Using my clever tricks I have up-cycled existing items that would have been otherwise destined for a landfill, combined with some budget savvy buys, creating a room full of personality.

The starting point to this room was a water stained retro sideboard, with a sand and a few coats of glossy Resene Broom carefully applied with a spray gun it has truly taken on a new life in a fashionable colour. The cowhide shaped rug was a gorgeous piece of vintage Feltex Axminster 'Summer Bouquet' estimated to be 50 years old, I picked it up on the side of the road in our local inorganic collection, and with some clever shaping and edging it gives the room a real wow factor.

Probably the weirdest thing in the room, I took Grandpa's old trophy out of the

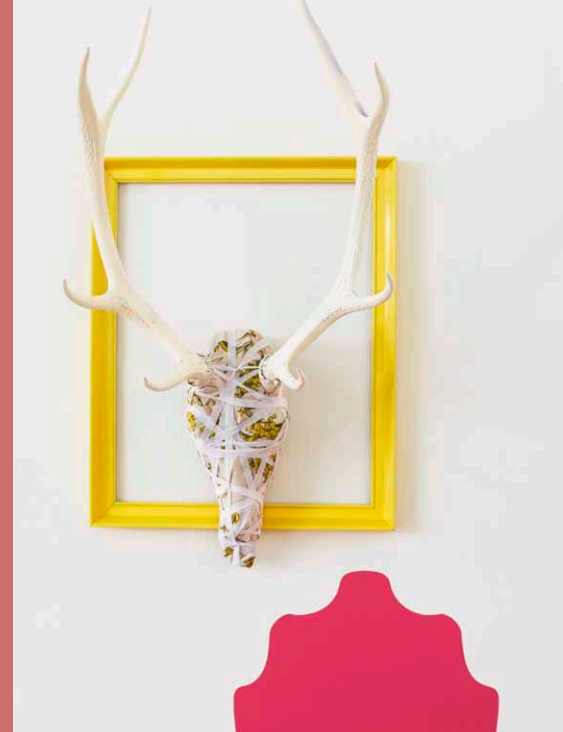
shed and brought it into 2009 with a coat of Resene Bianca on the antlers and some funky Florence Broadhurst fabric leftovers from recovering the chair. Topped off with a frame painted in Resene Broom it makes an eye-catching sculpture. The hot pink chair back on the wall is a painted silhouette in Resene Pink Panther, creating the illusion of more furniture in the room, but actually saving space and dollars.

One of the cheapest things in this room are the picture frames, they were around 50c each from garage sales. The ugly artwork went straight into the recycle bin, and I went to work with my brush and a selection of Resene colours in a gloss finish. A word of advice, invest in a box of disposable gloves for this delicate work! The pretty pink floral Vision wallpaper from the Esprit Home Collection, also from Resene, on the walls, and as a point of difference was carried up to cover the ceiling, now becomes an entire room of art.

Crown Lynn and other vintage and retro ceramics have become hot property, but don't cast it aside just because it has a crack or chip, with a new coat of glossy Resene Bondi Blue the imperfections are forgotten and the ugly duckling is now a beautiful swan again! This is a great option for those who feel they have to hide most precious things away from the pitter patter of tiny feet. Get creative by raiding plants and flowers from your own garden for an inexpensive but eye-catching and unique display.

**Colour Selection:** LeeAnn Yare  
[www.leeannyare.co.nz](http://www.leeannyare.co.nz)  
**Interior Designer:** LeeAnn Yare  
**Photographer:** Wendy Fenwick

**Colours Used:** Resene Bianca, Bondi Blue, Resene Broom, Resene Curious Blue, Resene Pink Panther  
**Products Used:** Resene Enamacryl



## Milford Residence

41 East Coast Road, Milford



Bright Grey

Double  
Concrete

Mine Shaft

Scarpa  
Flow

White

**Colour Selection:** Angela Parlane  
**Painting Contractor:** Ross Kingdom, Kingdom Decorators Ltd  
**Photographer:** Angela Parlane

**Colours Used:** Resene Bright Grey, Resene Double Concrete,  
 Resene Mine Shaft, Resene Scarpa Flow, Resene White  
**Products Used:** Resene Hi-Glo, Resene Sonyx 101, Resene Super  
 Gloss, Resene Lumbersider

The house is a 1930s bungalow, north facing, situated high on the northern side of East Coast Road in Milford and has beautiful views down to Milford Beach and further out to sea. The house is the front house, closest to the road, on a cross-lease site with a hedged fence line and grass at the front of the house and is fully concreted with no grass at the back of the site.

Three years ago we put in twelve 'Michelia figo' trees surrounded by 'Star Jasmine' bushes at the back of the site to provide a softer greener look to the back section. The trees are in planter boxes and have a coloured steel 'curtain' in a grey colour similar to Resene Scarpa Flow covering the boxes. The base of the house was also grey and with so much concrete on the site, we decided to keep the colour on the base of the house in the new colour scheme.

My aim was to create a fresh, modern look for the house but I also wanted it to be in keeping with the surrounding environment. As we did not have the previous colour chart for the exterior of the house, I matched the existing colour on the base of the house as closely as I could and chose Resene Lumbersider tinted to Resene Scarpa Flow. Due to the proximity of the house to the road and the dust created from the same, I did not want the weatherboards to be all white, so I chose Resene Double Concrete which gives the weatherboards the crisp fresh look I wanted and when taking in the view of the sea to the north of the house,

blends in well. For the windows, all the door frames, the pergola and the deck posts, front porch pillars and the eaves, I used white Resene Sonyx 101. The window sills, the guttering around the roof line, the window boxes, letterbox roof, the garage door and the top edge of the chimney are painted with Resene Mine Shaft, while on the front door I used Resene Mine Shaft in a gloss finish. The roof which is corrugated iron has been painted in Resene Hi-Glo tinted to Resene Bright Grey.

The house now has a crisp, clean more modern look with many comments from passers-by on how good the house looks now it has been painted.







## Victorian Style Brought to the 21st Century

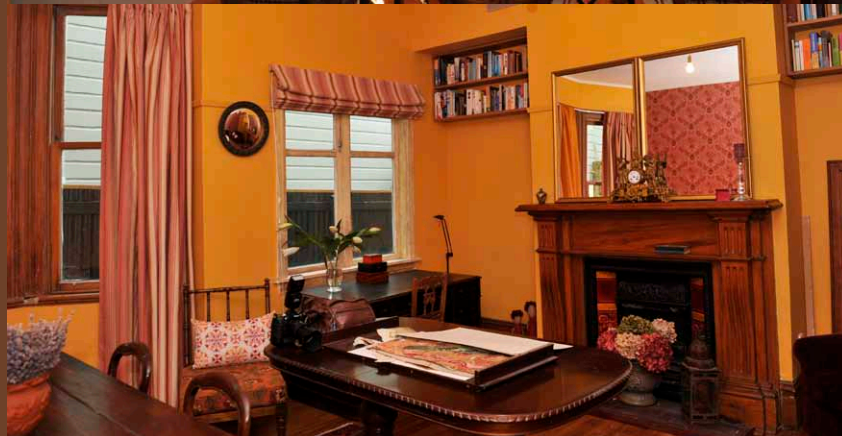
15 Park Street, Thorndon

This character villa nestled in Wellington oozes spirit and charm. The brief from the client was to make the formal dining room bright and warm.

With hardly any natural light a bright paint colour was essential. Resene Saffron was the colour chosen and it worked well with all the existing furniture and feature elements.

The original wallpaper was found hidden under layers of existing wallpaper dating back to the 1900s. This wallpaper was reproduced by Sans Pareil Screenprint and then re-hung by Norman Honey. The colours in the wallpaper were matched to the original as an exact replica was essential. Resene Gold from the metallics range, Resene Jumpstart and Resene specials Sans Pareil Medium Red, Medium Pink, Light Pink and Red were chosen.

This dining room is now very cosy and it brings the history of the room back to the 21st century.



Saffron

Jumpstart

Metallics  
Gold

**Building Contractor:** James McLaughlan, Black n White Construction  
**Interior Designer:** Anita Thomas Interiors Ltd [www.anitathomas.co.nz](http://www.anitathomas.co.nz)  
**Painting Contractor:** Matt Cleworth  
**Wallpaper:** Sans Pareil Screenprint  
**Wallpaper hanger:** Norman Honey  
**Photographer:** Yvette MacDonald

**Colours Used:** Resene Gold, Resene Jumpstart, Resene Saffron, custom colours San Pareil  
**Products Used:** Resene SpaceCote Low Sheen, Resene Enamacryl Metallic

 Resene Drumbeat











## Urban Earthen Treasure

Eden Apartments, Pacific Highway, North Sydney

The desired mood was to create a cosy, warm combined living and kitchen area that was aesthetically pleasing, with an added element of spice for interest. The challenge was to maintain a sense of spaciousness and create a warm and inviting scheme that worked with the existing charcoal leather sofa, tan carpet, light grey blinds and furnishings. Furthermore, the brief was to introduce a sense of uniqueness while also maintaining the contemporary and neutral look of the apartment in case it was to become a rental property in the near future. Essentially, the colour scheme had to be versatile, and able to be jazzed up with the addition of a few personalised styled accessories and artwork, or dressed down to a modern, blank canvas.

The only natural light to the living area was provided from one floor to ceiling, wall-length window, which had a south-east aspect. This meant that the space did not receive much natural light, and hence the selection of a warmer colour scheme of earthy oranges and soothing yellow best countered the cooler south

aspect. Artificial lighting was provided by the existing modern halogen lights.

The colour scheme was selected after considering the purpose of the space – the kitchen area was primarily for preparing and cooking food for a young busy corporate couple; and the adjoining living area was for unwinding after a hard day's work and entertaining friends. Resene Burnished Orange from the Karen Walker Paints collection was selected for the kitchen ceiling for its rich earthy hue and sophistication – a colour that would be a bold statement for a ceiling, and yet reduced enough to sit back and not dominate the space. The added metallic sparkle gave it a little something extra for keen eyes and would encourage visitors to take a second look.

Furthermore, the psychology of the colour orange in the kitchen supported the purpose which was to stimulate appetite during preparation of hearty meals, and also encourage efficiency in the kitchen so that cooking and cleaning tasks would be completed faster and activities could move on sooner to the relaxing living area.

Resene Cocoon was selected as a supportive warm, on-trend neutral milk-tea colour that complemented the Resene Burnished Orange and brought out the warmth of the space, especially when used on the wall behind the charcoal leather sofa. Its gentle creamy-yellow hue is uplifting and optimistic, which supports the function of the space as a haven to relax and unwind.

The existing colour of the south living area wall was colour matched and touched up in Resene Quarter Spanish White to maintain the sense of space by using a subtly lighter colour than the main living wall. Resene Stonehenge was similar to the grey gum trees, which can be seen out the living room window, and hence became an inspiration colour to harmonise the existing sofa and blinds to complete the colour scheme.

Together the colour combination creates a harmonious scheme that is reminiscent of the Australia landscape of red earth, sand and soothing grey gum trees.

Cocoon

Burnished Orange

Quarter Spanish White

Stonehenge

**Colour Selection:** Simmy Wong  
**Photographer:** Simmy Wong  
**Artwork in living area from** [crazyfish.com.au](http://crazyfish.com.au)

**Colours Used:** Resene Burnished Orange, Resene Cocoon, Resene Quarter Spanish White, Resene Stonehenge (inspiration for soft furnishings)  
**Products Used:** Resene Enamacryl Metallic, Resene SpaceCote Low Sheen

 Resene Kookaburra





Resene Total Colour Residential Interior Maestro Award





## Additions and Alterations – Colourful Styles

15a Kinghorne Street, Strathmore

Additions and alterations for this project involved a modest addition for a new master bedroom and second living room, as well as a new open plan living arrangement. All work had to be considerate of the house's 1940s heritage with traditional detailing and solid timber construction, one of the area's first state houses.

Oversized sliding doors from the new open living space link the interior with the vast views over Cook Strait and the Wellington Airport. The client's love for the proximity to the harbour, ocean and surrounding beaches was a strong focus for this unpretentious bach-like kitchen.

Renovations for the kitchen came straight from the influences of Piet Mondrian's renowned block-colour artworks. In keeping with the Art Deco style of the original house, this kitchen has blended effortlessly with the existing detailing and client's vibrant Deco furnishings. The simple linear shapes and staggered block-colour arrangements were the perfect canvas for painting bold and stylish Resene colours. In collaboration

with the client, the final colours and their arrangement were key decisions aided by 3D CAD images and Resene colour drawdowns and testpots. The joiner's high level of craftsmanship and knowledge of materials made for a clean seamless finish.

Cabinetry colours include Resene Soapstone, Resene Pattens Blue, Resene Moon Glow, Resene Jalapeno and Resene Blue Night, framed between the striking dark border of Hoop Ply.

**Architectural Specifier:** N & Co Architecture

**Building Contractor:** Simon Skinner, Skinbuilt Ltd

**Colour Selection:** Hayley Whitehead, N & Co Architecture and Client (collaboration)

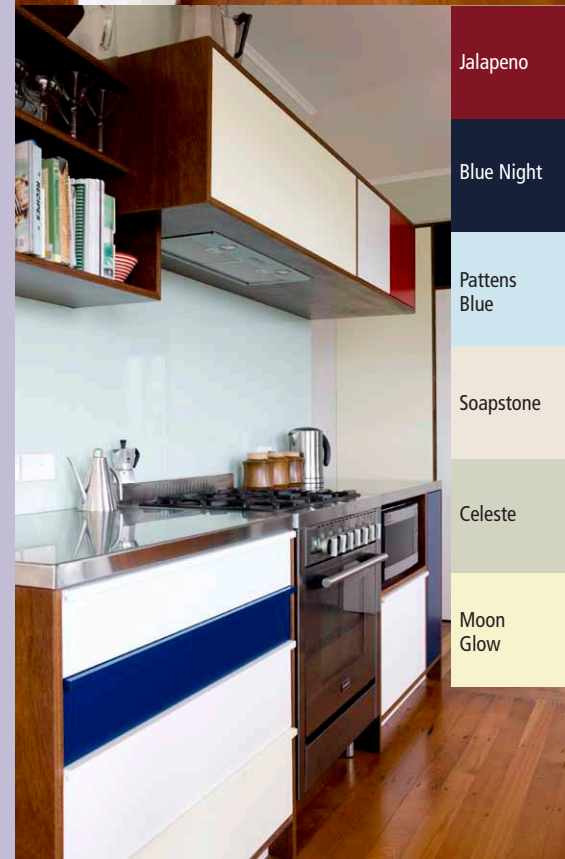
**Joiner:** Living Timber

**Painting Contractor:** Joseph Painter, Subcontractor to Simon Skinner

**Colours Used:** Resene Blue Night, Resene Celeste, Resene Jalapeno, Resene Moon Glow, Resene Pattens Blue, Resene Soapstone

**Products Used:** Resene decorative paints

 Resene Poet



Resene Total Colour Residential Interior Maestro Award











## Redoubt Retreat

820 Redoubt Road, Manukau



This home on Redoubt Road, Manukau was a long time dream for the owners. This was the first time they had an architectural and interior designer team working together to create a home.

With a strong focus on blending the house with its surrounding native bush environment, bringing the outside in was the inspiration for the neutral colour palette. This is emphasised by the bark like texture of the Resene Vision Wallcoverings Thatch 21921 on the tall entry wall giving visitors the feeling of walking through a tree trunk to enter the house. The wallpaper also features on the wall behind the master bed.

The Resene range of neutral colours proved to be the most neutral (in hue)

on the market. The colours have been used to clearly define different areas and create a warm, inviting and relaxed home.

The pool room/office uses a combination of Resene Stonewall and Resene Zeus to create a 'men's zone', warm and strong to accommodate the competitive spirit of in house pool competitions.

The family room uses Resene Coriander to absorb the sunshine and create a light fresh place to sit and catch up with family. This colour is found in the floral couch, which is a family favourite and was the basis for all other furnishings in the room.

The lounge colours were to provide a backdrop to existing artwork and

furniture collected over time. Resene Stonewall, Resene Cargo and Resene Pavlova created a warm and neutral palette to allow these items to speak for themselves.

The home required a very specific use of colour and to maintain a high quality finish on the walls we have chosen Resene Wallpaper 47124 as a textured base for our Resene paint selections.

The Resene colour palette was an integral part in creating a cohesive design for the home, incorporating existing elements in a completely new environment. The result now exudes all the elements you would expect to find in a 'home' and the owners don't wish to be anywhere else. They call the result 'perfect' and it is now their Redoubt Retreat.

Pavlova

Cargo

Stonewall

Zeus

Sisal

Hillary

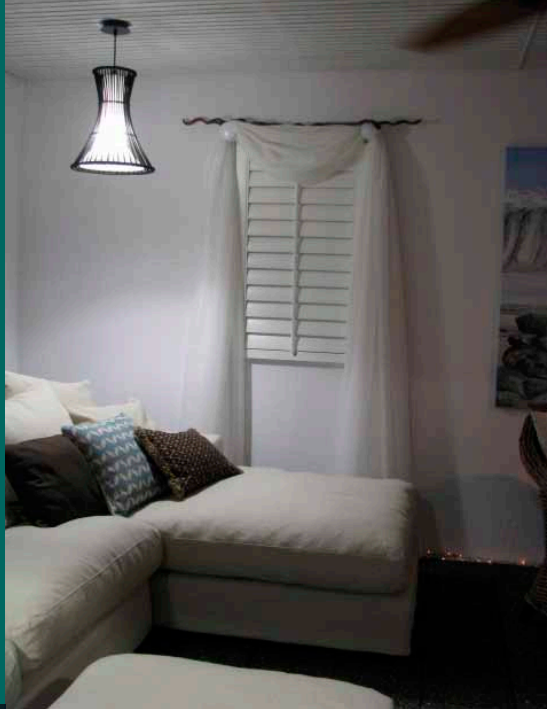
Coriander

**Architectural Specifier:** Mia Casa Architecture  
**Building Contractor:** Van Der Putten Builders Limited  
**Colour Selection:** Emmy van Middelaar  
**Interior Designer:** Emmy van Middelaar  
**Painting Contractor:** c/o Van Der Putten Builders Limited  
**Photographer:** Emmy van Middelaar

**Colours Used:** Resene Cargo, Resene Coriander, Resene Hillary, Resene Pavlova, Resene Stonewall, Resene Sisal, Resene Zeus  
**Products Used:** Resene decorative paints, painted over wallpaper

## Whale Bay Alfresco Chalet

Waikato Home & Garden Show



Half Black  
White

Sea Fog

Polo Blue

This was a display I created as an entry for the 'New Zealand Interior Design Awards' which was held at the Waikato Home and Garden show.

The brief we were given was to design and build a space around the theme of 'Four Seasons'.

I chose to do a spring come summer setting and created a chalet, situated on the foreshore of Whale Bay in Raglan. Envisioning stunning views, showcasing the ocean and surf, surrounded by sub-tropical gardens and opening out onto a paved pool area. It was important to incorporate these elements indoors as well, using natural textures, rustic timbers, stone flooring and serene blues.

The main focus of the design concept was the amazing piece of artwork titled 'Bird', which I then carefully built my colours around for the overall décor.

The three paint colours I used were Resene Half Black White on the ceilings, Resene Sea Fog on the main wallpapered walls and Resene Polo Blue on the feature wall.

**Building Contractor: Brendan Hopson**

**Colour Selection: Lucy Furniss**

**Interior Designer: Lucy Furniss**

**Photographer: Lucy Furniss**

**Colours Used: Resene Half Black White, Resene Polo Blue, Resene Sea Fog**

**Products Used: Resene Zylone Sheen, Resene SpaceCote Low Sheen**

The walls were finished with two coats of Resene SpaceCote Low Sheen and the ceilings were finished with two coats of Resene Zylone Low Sheen.

The wallpaper was a 'Vision' paper with a subtle grid style texture which was used to add some warmth to the room.

For the overall palette, charcoals were used to give 'bright and breezy' a grounded appeal, enhancing it with calming blues to capture the intrinsic haziness of a coastal environment, and contrasting these were crisp whites and linens to give the perfect finishing touch to a relaxed, alfresco living space.

It really was a place that you could happily go home to after a stressful day at work to rejuvenate your body, mind and soul, with no distractions from the outside world; somewhere to process your thoughts and ideas... dreaming about your next Resene project.

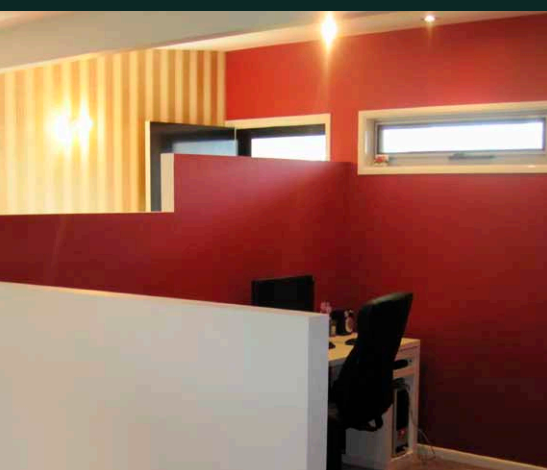
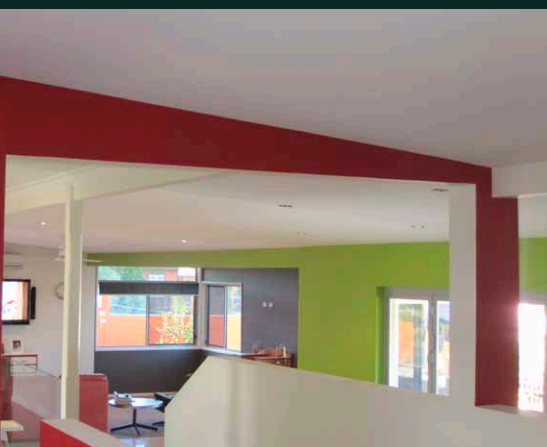
 Resene Globe





## Ashgrove Residence

6 Lone Pine Street, Queensland



The colour scheme is an amendment to a previous monotone scheme. Formerly white hues have been deserted for an injection of colour, not only for appearance but for some division and to change proportion to the internal living areas.

An entry wall has been wallpapered in a richly decadent yellow gold hue with vertical lines complemented by an adjacent study painted in Resene Dynamite. This red is both dramatic and lively yet a warm choice purposely for the intended work area,

The lower level down from the entry is the hub of the home, the kitchen. The kitchen is painted in Resene Limerick.

Green is a personal favourite and links in well with the focus on green living.

A soon to be installed kitchen of white Caesar benches and black lower cupboards will complete the look.

The large home has been enhanced and defined by choices and applications of colour. The below living/dining area overlooks city lights and suburbia and has been painted in Resene Masala. This has been chosen with the intent of its greatest effect at night. The room really seems to disappear into the night sky.

Resene Masala as a choice is flawless; a brown yet grey with a green undertone. A timeless colour to live with.

Dynamite

Limerick

Masala

**Building Contractor:** DJT Building Pty Ltd  
**Interior Designer:** Karen Kruisdyk-Moore  
**Painting Contractor:** Kruisdyk Painting Services Pty Ltd  
**Photographer:** Karen Kruisdyk-Moore

**Colours Used:** Resene Dynamite, Resene Limerick, Resene Masala  
**Products Used:** Resene Zylone Sheen



**Adsett House**

7 Myers Drive, Shoreham





This project has been a dialogue between artist and architect: art and architecture; figure and ground; foreground and background. This is achieved partly through spatial and formal tactics that make the distinction between art and architecture ambiguous.

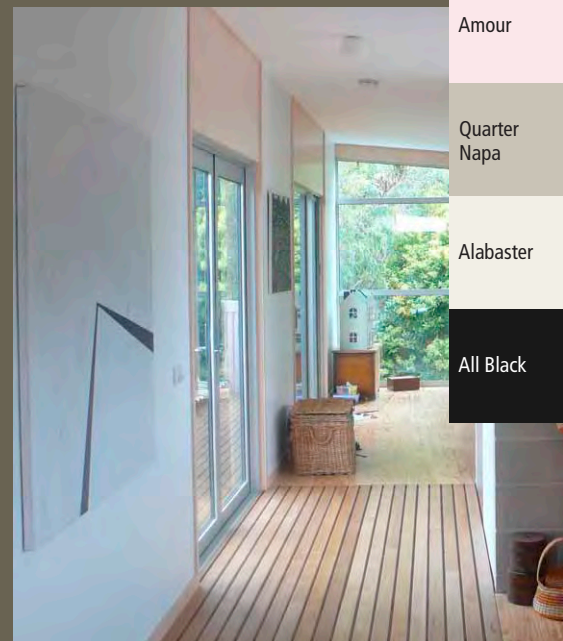
The lawn, for example, is a 12 metre x 12 metre 'canvas' placed centrally on the site and clearly framed in corten steel. At one level, it is the central figure, and the house merely forms part of the frame. However, at another level, the lawn is a classical plinth for the house as a sculptural object. The lawn fluctuates from being the work of art itself, to the frame: from art to landscape.

As another example, the striped canvas along the front of the house is a direct reference to French artist Daniel Buren exhibited for the street to see: for a moment, it is the central figure again framed by the structural columns and the house behind it. However, these canvas stripes are simply a balustrade and built-in deck chair from which to



view paintings hanging in the studio/gallery inside: they fluctuate from being the artwork itself to a seat from which to look at artwork; from art to architecture.

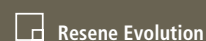
Colour forms a critical role in this play between figure and ground; foreground and background; art and architecture. Dark battens recede into the light wall, the light stripe between structural columns merges with the wall behind, and shadows of the structural columns to the front of the house are confused with dark lines on the same wall. Colour is not applied to this house, it is integral.



- Alto
- Amour
- Quarter Napa
- Alabaster
- All Black

**Architectural Specifier:** Kebbell Daish [www.kebbeldaish.co.nz](http://www.kebbeldaish.co.nz)  
**Building Contractor:** Wainwright Construction  
**Client and Collaborator:** Peter Adsett  
**Colour Selection:** Kebbell Daish  
**Painting Contractor:** Wainwright Construction

**Colours Used:** Resene Alabaster, Resene All Black, Resene Alto, Resene Amour, Resene Quarter Napa  
**Products Used:** Resene Lumbersider, Resene SpaceCote Flat









## New Farm Penthouse

Lower Bowen Terrace, New Farm

The inspiration for our concept behind the New Farm Penthouse was greatly influenced by the location and outlook.

With a spectacular view of Brisbane's iconic Story Bridge, we were inspired to create an interior based on the concept of encapsulating the bridge within the space.

Resene Masala was selected for its ability to interpret the industrial hues of the Story Bridge in a sophisticated palette.

Together with upholstered walls in Lumiere Peppercorn, custom-coloured carpets, bench tops in Emerald Pearl Granite, joinery in 'Aniseed' timber veneer and shutters coloured in Resene Alabaster, the vibrancy of the Story Bridge is felt throughout the apartment.

When selecting furnishings we wanted to extend on the gallery feel created by the dramatic backdrop in Resene Masala.

A pair of oversized antique Chinese cabinets has been built into the wall and sit alongside classic design like the Platner Chair (designed in the 1960s by Warren Platner for Knoll), the iconic Taccia lamp (designed in 1962 by Achille Castiglioni for Flos) and Bertioia Wire Stools (designed by Harry Bertioia in 1952 for Knoll).

A custom designed built-in cocktail cabinet is finished in Resene Masala, blending into the wall. It then opens to reveal a sophisticated interior of 'Aniseed' veneer glass and mirror.

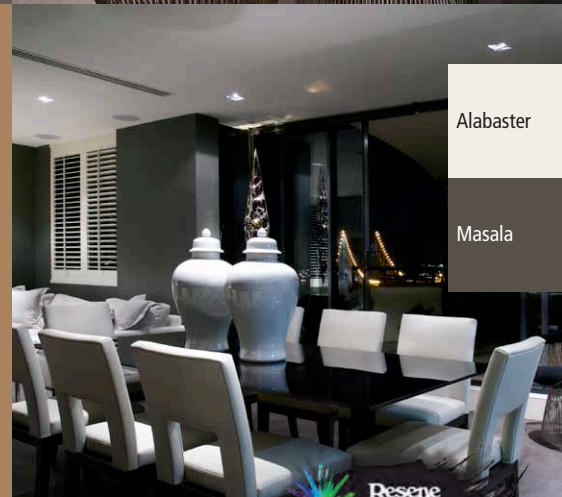
Lighting extends on the gallery feel of the space with 'Battery' square trimless low voltage lighting plastered into the ceiling, highlighting key furniture pieces and creating a dramatic moodiness to the interior.



**Building Contractor:** Multispan Australia  
**Interior Designer:** Phorm Interiors  
**Joinery and Custom Furniture:** Comax Australia  
**Painting Contractor:** Multispan Australia  
**Photographer:** Kylie Hood

**Colours Used:** Resene Alabaster, Resene Masala  
**Products Used:** Resene decorative paints

 Resene Secret Road



Alabaster

Masala







## Mission House

21 Coromandel Street, Newtown

An inner city suburb home once owned by the 'Sisters of Our Lady of the Missions', this property has been admired by many for the wonderful gardening skills of the Nuns and their 'warm' and inviting home. On their retirement the property was sold, the gardens stripped and it was rented out. I purchased the house a year or two later and worked along with family to rejuvenate this special property and bring it back to life. I had already developed a large villa in the area using a strong base of colour – initially there was shock from some in the neighbourhood, however once completed it was met with a great response. In addition, I had just returned from a long hot holiday in Europe and in hindsight, I feel this may also have had an effect on me of trying to recreate warmth.

So with a passion for colour and texture, we decided on colours for their warmth and vitality. The same colours and theme were then also used in the grounds. The gardens were re-landscaped and restructured, fences developed and plants chosen to enhance these colours. Some existing materials were recycled, including the original picket fence, which was uplifted and placed into the new plaster fence. Local artisans were commissioned to design new features to sit sympathetically alongside the gate and stained glass windows that were manufactured in complementary colours.

Now we have a cosy haven with interesting street appeal and a colour scheme that has followed through internally with the same bold, exciting use of Resene colours.

McKenzie

Hazard

Lusty

**Building Contractor: Andrew Potter**  
**Colour Selection: Chrissie Potter**

**Colours Used: Resene Hazard, Resene Lusty, Resene McKenzie**

**Products Used: Resene Lustacryl**

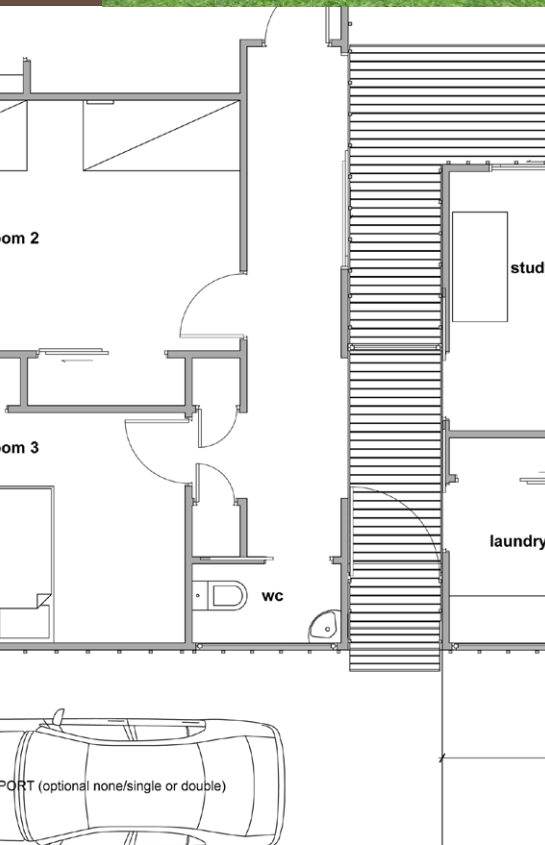
 Resene First Light







## Aotearoa Housing



Aotearoa Housing is a student design proposal for an affordable housing option. It is aimed towards providing a higher quality and standard of living for Maori. It is envisaged that this will be built in transportable units that can be built and then transported or shipped to the site.

This design is a three bedroom residence comprising of two separate pavilions that are connected by a boardwalk style decking. This allows the user to separate living and bedroom areas.

Three colour schemes are proposed that will be available to give people choice and the opportunity to personalise their home. All three colour options are aiming for a funky, modern style of living.

The vibrant use of colour gives the users a clean, fresh environment and makes the buildings stand out from the standard brick and tile homes that are all too common now. The green colour option represents the importance and value of land, plant and greenery in Maori values. The blue is representative of the spiritual attachment to water. The red is a reference to the symbolic red used in carving and patterning by Maori.

### Colour Selection: Renee Holtom

**Colours Used:** (Kakariki) Resene Black White, Resene Kombi, Resene Limed Oak, Resene Limerick (Kotare) Resene Calypso, Resene Endeavour, Resene Smokey Ash (Kokowai) Resene Bullseye, Resene Crowshead, Resene Pulse



 Resene Double Buffalo

Kombi

Limed Oak

Black White

Limerick

Calypso

Smokey Ash

Endeavour

Bullseye

Crowshead

Pulse



Compass

Bluegrass

Flashback

Lime White

Escapade

## Hovea Drive Residence

16 Hovea Drive, Koala Beach

This private residence is located on the Tweed Coast of northern New South Wales for a young family who enjoy engaging with the natural world.

The residence has been designed and coloured to promote this connection – to encourage the occupants to transition between natural and built space.

Colours reflect those found in the local natural environment – sea greens; whitewater; beach grasses; blue skies; field flora; golden sunsets. The house comprises two pavilions connected by a central deck. External walls presenting to neighbours are clad with metal sheet, coloured in subdued landscaped grey-greens. The colour wall is located on the 'inside', between the pavilions, representing the living heart of the house.

The colours also suggest the personalities of the family – sometimes as individuals – sometimes an overview of the moods of time.

The colours have been applied in staggered panels, set to a rhythm as if to appear random on the wall. This was done:

- To assist in reducing the scale of the wall.
- To reflect the varied form and scale of elements in the natural environment.
- To suggest movement in the static composition.

As the coloured wall faces east-north-east, part of its appeal is the change of lighting intensity that it receives at various times across the day.

Bright morning light reinforces the depth of the colours and also creates a dappled effect from the shadows of the significant trees adjacent to the site. It signifies that the day has commenced.

Afternoons see the wall in shadow and the colours are draped in a more even softer light. The day is winding down. The colours of the wall are often reflected by those in the sky as the sun sets in the background.

**Architectural Specifier:** Chris Lillis,  
Crisilis Architecture  
[www.crisilis.com.au](http://www.crisilis.com.au)  
**Building Contractor:** Debra Lillis  
**Colour Selection:** Chris Lillis

**Colours Used:** Resene Bluegrass, Resene Compass, Resene Escapade, Resene Flashback, Resene Lime White  
**Products Used:** Resene Lumbersider

 Resene Flashback













## Banks Peninsula Residence

324 McQueens Valley Road,  
Christchurch

The house is a 60 year old farmhouse on a 40 acre block of land on Banks Peninsula surrounded by a lovely rose garden and topiary scrubs. The client had just bought the house and was desperate to get the interior of the living, dining room, bathroom and kitchen updated and modernised because it looked very old fashioned and tired with old varnished timber slats on walls and ceilings in the bathroom and kitchen. The timber surface made the space look very dark and gloomy especially because the kitchen had only one boxed kitchen window.

Even during the summer my client had to use artificial light in her kitchen to be able to see properly during the day. The lack of bench and storage space in the kitchen was a problem too. The kitchen was very small, only 2.4 metres wide and about 3 metres long on the outside wall and 1.5 metres at the opposite side.

To make better use of the space with more storage, a pantry, built-in fridge, kitchen island, suitable lighting and easy to clean surfaces were key requirements that had to be taken into consideration in the design.

The proposal included the removal of a load bearing wall in between the dining room, kitchen and living room to take away timber slats of walls and ceiling and replace with plasterboard. A huge old water cylinder situated in a corner cupboard in the kitchen was pulled out as well and replaced with a gas unit for water heating, making way for a pantry cupboard, built-in fridge, kitchen island and storage space. By removing the internal wall we also gained a huge increase in natural light flowing into the room because it opened up the entire space.

Colours from the Resene Akaroa range have been used. They are soft neutrals that reflect the light in a friendly way and fit perfectly in the natural environment of Banks Peninsula. The light coloured shiny granite bench top mirrors the outside light as well. The kitchen has clean lined panelled doors with tongue and groove panelled sides to enhance the country feel.

The appliances are stainless steel to contrast with the soft neutrals and to give it a contemporary touch. The ceiling lighting is fluorescent and dimmable and a string of small LED lights is tucked away behind the moulding around the extractor fan to bring a warm and cosy atmosphere in the evening.

After nine months of renovating the client is thrilled with the end result.

**Architectural Specifier: Nanda Poort-Rammers and Rob Harnett, Harnett Design**

**Building Contractor: Stuart Hendry Builders Ltd**

**Colour Selection: Nanda Poort-Rammers [www.twinriversinteriors.co.nz](http://www.twinriversinteriors.co.nz)**

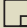
**Kitchen Joiner: Brent Johnson Joinery Ltd**

**Painting Contractor: Stuart Hendry Builders Ltd**

**Photographer: Amanda Sinclair, Radiate Design**

**Colours Used: Resene Akaroa, Resene Double Akaroa, Resene Half Akaroa, Resene Quarter Akaroa**

**Products Used: Resene Broadwall Surface Prep & Seal, Resene Sureseal, Resene SpaceCote Flat, Resene TimberLock**

 Resene Daydream

Half  
Akaroa

Quarter  
Akaroa

Double  
Akaroa

Akaroa





Blast  
Grey 2

Blast  
Grey 3

Shiraz

Merino

Alabaster

Licorice



Architectural Specifier: Paris Magdalinos Architects  
[www.pmarchitects.co.nz](http://www.pmarchitects.co.nz)

Resene Total Colour Lifetime Achievement Award





House at Ohiti



Resene Total Colour Lifetime Achievement Award





**1800 738 383**  
**[www.resene.com.au](http://www.resene.com.au)**

**0800 RESENE (737 363)**  
**[www.resene.co.nz](http://www.resene.co.nz)**

**[www.resene.com/colourawards](http://www.resene.com/colourawards)**