





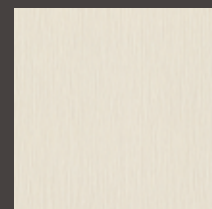


Left: Not just one but many wallpapers bring this room to life. The dramatic botanical Resene Wallpaper Collection 221181 is used as a feature wall, the side tables and boxes on the bookcase are covered in Resene Wallpaper Collection 220921 (small table) and Resene Wallpaper Collection 17959 (large) with tops in Resene Quarter Bokara Grey and the bookcase is in Resene Triple Sisal and Resene Half Bokara Grey with the back finished in Resene Wallpaper Collection 220359. Wall in Resene Triple Sisal, flooring in Resene Colorwood Shade, planter in Resene Bokara Grey, circular DIY artwork textured with Resene EzyFill Quick and painted in Resene Gimblet and Resene FX Metallic Gold, mug in Resene Bokara Grey, bowl in Resene Quarter Truffle and light pendant in Resene Triple Truffle and Resene Double Truffle. Rug from Briscoes, lamp from Lighting Direct, sofa from Interior Warehouse.

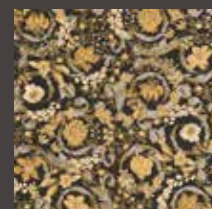
top tip

Wallpaper collections change regularly. It's often best to order more wallpaper than you need so you have spare if you need to fix up any damage in the future.

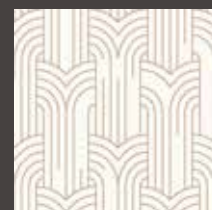
- | | | | |
|---|------------------------|--|-----------------------|
|  | Resene Quarter Truffle |  | Resene Triple Truffle |
|  | Resene Double Truffle |  | Resene Gold |



Resene Wallpaper Collection 537628



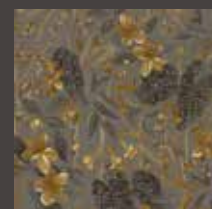
Resene Wallpaper Collection 387065



Resene Wallpaper Collection M421-02



Resene Wallpaper Collection RD920



Resene Wallpaper Collection 538229

-  Resene Gimblet
-  Resene Triple Sisal
-  Resene Quarter Bokara Grey
-  Resene Half Bokara Grey
-  Resene Bokara Grey
-  Resene Colorwood Shade

New designs coming to Resene ColorShops in autumn.

bold choices

Today's wallpaper designs let you go as plain or as bold as you like.

Looking for the right wallpaper is a heady experience. Fanciful and whimsical scenes captivate us, large scale botanical prints or intricate florals enchant us, assertive geometrics catch our eye and mural-style designs tempt us.

As with any decorating journey, a successful outcome is grounded in knowing what you are trying to achieve – do you want something subtle like Resene Wallpaper Collection 537628 that's bought alive with texture and paired with natural finishes, or something that wows you when you walk into the room like the Versace style opulence of Resene Wallpaper Collection 387065? Or something in between like the elegant arches of Resene Wallpaper Collection M421-02?

Resene wallpaper can be used to lend quiet elegance to a room with subtle texture and colour. Plain wallpapers or grass cloth effects are an option but there are also neutral wallpapers with subtle tone-on-tone designs.

Says Resene Colour Expert Brenda Ngatai: "Neutral wallpapers are always a winner. They give another dimension to the design of a space, they soften the walls, give low-impact texture and give a calmness to the space."

Some wallpapers also carry different sheen levels or textures, which add depth to even neutral colourways. Anaglypta wallpapers like Resene Wallpaper Collection RD920 offer a pattern or texture that can then be painted with your chosen Resene paint colour.

While neutrals are a popular go-to choice, wallpaper colours that are rising in popularity are "very much bronze, golds and brown tones, with dark earthy blues or greens, pinks and/or greys as the contrast," says Brenda.

These can be used as a feature wall, married with either a Resene paint colour that's inspired by the wallpaper, or with a plain wallpaper from the same collection.

Feature walls have never really fallen out of fashion and with the increase in bold highly-patterned papers and mural-style offerings like the dreamy botanicals of Resene Wallpaper Collection 538229, using one of these as an accent makes sense.

Certainly, bolder wallpapers are having more than a moment and there are plenty to choose from. For those fully embracing the look, these wallpapers are being applied to all four walls of a room.

"A bold pattern is a statement and is often great in large spaces, as it fills in voids in open spaces," Brenda says. "Be mindful of keeping a balance to the space, make sure the colourway ties in with what's already there such as the flooring and furniture."

It's also worth remembering wallpaper is not just for walls and doesn't need to be used in full drops. It can be used in small squares, circles or any other shapes –



Left: Combining complementary wallpapers, one patterned and the other plain or lightly textured, is a restful yet eye-catching solution. The headboard wall is papered in Resene Wallpaper Collection M644-01 with the rest of the room in Resene Wallpaper Collection A137-11. Pair with Resene Alabaster painted on the ceiling and a headboard in Resene Soothe.

Below left: The stylised wave design of Resene Wallpaper Collection M629-07 is full of fluidity and subtle texture - the perfect solution for a bathroom that answers the need for a neutral scheme but with a twist. Pair it with Resene Poured Milk and Resene Colorwood Breathe Easy.

- Resene Alabaster
- Resene Colorwood Breathe Easy
- Resene Poured Milk
- Resene Soothe



Below: Create a unique feature using a combination of paint and wallpaper to form a chequerboard pattern. This wall is patterned with Resene Vivid Wallpaper Collection 384503 along with painted squares in Resene Smashed Avocado, Resene Dell and Resene Green Leaf. Floor in Resene Triple Foundry topcoated in Resene FX Paint Effects Medium mixed with Resene Waiouru, Resene Vantage Point and Resene Double Foundry, side tables in Resene Dell, planter in Resene Green Leaf and other accessories in Resene Copper Fire and Resene Pendragon. Chair from Forma, lamp from Lighting Plus with shade painted in Resene Green Leaf.



geometric or freestyle. It can also be used on lampshades and books and to create framed artworks. It can be wrapped around drum-style side tables and stools, used to line the interior of a wardrobe or the backs of shelves or to create a classic panelled wall. For a real showstopper it can even be used on your ceiling.

Using bold wallpaper patterns in small amounts on decor pieces or as contrast accents to your Resene paint colour is a smart way to experiment with pushing your colour and pattern boundaries without going overboard.

Papering a small toilet or bathroom in a distinctive pattern is another safe way to dip your toe in the wallpaper water. It's a small project, in a tucked-away space that can feel safer for experimenting with bold designs. Plus, it will look superb, creating a fun visual surprise for anybody who enters. **H**

- Resene Copper Fire
- Resene Pendragon
- Resene Smashed Avocado
- Resene Green Leaf
- Resene Dell
- Resene Vantage Point
- Resene Waiouru
- Resene Double Foundry

images Aspiring Wallpapers, Bryce Carleton
projects Megan Harrison-Turner

View the full range in the wallpaper library at your local Resene ColorShop.