



Behind the scenes

Capturing the essence of the Balinese style is just as much to do with the product selection as the design, says Masonry Design Solutions

The open pavilion-style architecture that helps make a Balinese resort holiday so memorable is well suited to our laid-back New Zealand lifestyle. But it does need to be specifically tailored to suit our climate and conditions.

For this project, designed by Mark Wilson of Masonry Design Solutions, the masonry construction helped achieve a sense of solidity and permanence.

“It reinforces the concept of a high-end boutique resort hotel,” Wilson says. “Other design features that contribute to this look

include the open, lanai-style living area, and wide openings to the outdoors.”

The attention to detail is reflected in the construction. Glover Developments, a specialist builder of high-end houses, was contracted to build the house. Wilson says the company was chosen for its extensive experience in both masonry and timber-framed construction.

“In a project such as this, the quality of the construction and the finishing makes the difference. Every feature was custom built – a job that required ingenuity as well

as skilled craftsmanship and an appreciation of the architectural style.”

Another key element contributing to the traditional Balinese look is the shingled roof, which has a 37° pitch. The designer specified Oakridge 30 fibreglass-reinforced asphalt shingles from Shingle and Shake Roofing.

“These shingles enhance the character of the home – they are also a highly durable option,” says Wilson.

The landscaping also helped determine the tropical feel. Landscape architect Robin



Shafer of Shafer Design was contracted to design a pool and garden that would be in keeping with the theme.

“The landscape is an integral part of the house, and Shafer Design has ensured the Balinese influence remains, while providing a planting scheme that fits with the climate and conditions,” says Wilson.

Peter Fell Coloured Concrete was specified for many of the outdoor living areas and the pool surround.

“Using Peter Fell Coloured Concrete made it easier to create the large modules



Facing page and above: Tropical plants, sun loungers and a lanai-style outdoor room reinforce the resort ambience of this house designed by Masonry Design Solutions and built by Glover Developments. The steep-pitched roof features shingles from Shingle and Shake Roofing. The powdercoated aluminium joinery is from Vantage Windows North Shore.

Left: Many of the accessories and furniture were sourced in Bali. The landscape, designed by Robin Shafer, features Peter Fell Coloured Concrete laid in elongated flagstones. Photography by Bruce Clarke, Incredible Images



we required," Wilson says. "The concrete was laid to resemble elongated flagstones, which provide the size and scale needed to balance the architectural features."

The designer says the coloured concrete was also specified for its durability. As the colour is an integral part of the concrete, it can't chip off or wear away.

Peter Fell Coloured Concrete comes in a wide range of colours, including terracottas, sandstones and earthy tones. This project features colour No 155 – a subtle grey-brown tone.

The door and window joinery was chosen to complement the architecture, and to provide a seamless flow between inside and out. Vantage Windows North Shore provided Vantage Metro powdercoated aluminium joinery from Architectural Profiles (APL). This included large sliders.

APL's Metro Series is a versatile range of heavy duty windows and doors designed to be used in New Zealand's demanding environments.

Providing a high-quality finish to the interior was another priority for the design

team. The Gib Ultraline Plus plasterboard walls are painted in Resene paints, with colours chosen to complement the setting. Resene Akaroa and Triple Akaroa from The Range Whites & Neutrals fandeck feature in the living areas.

The master suite is painted in Resene Windblown Green from the Karen Walker range. This colour palette, compiled by one of New Zealand's leading fashion designers, presents a collection of subtle hues that reflect the latest colour trends.

Colours in other bedrooms include

Resene Secret Garden from The Range fashion fandeck, and Resene Dark Rum from the Multi-Finish collection.

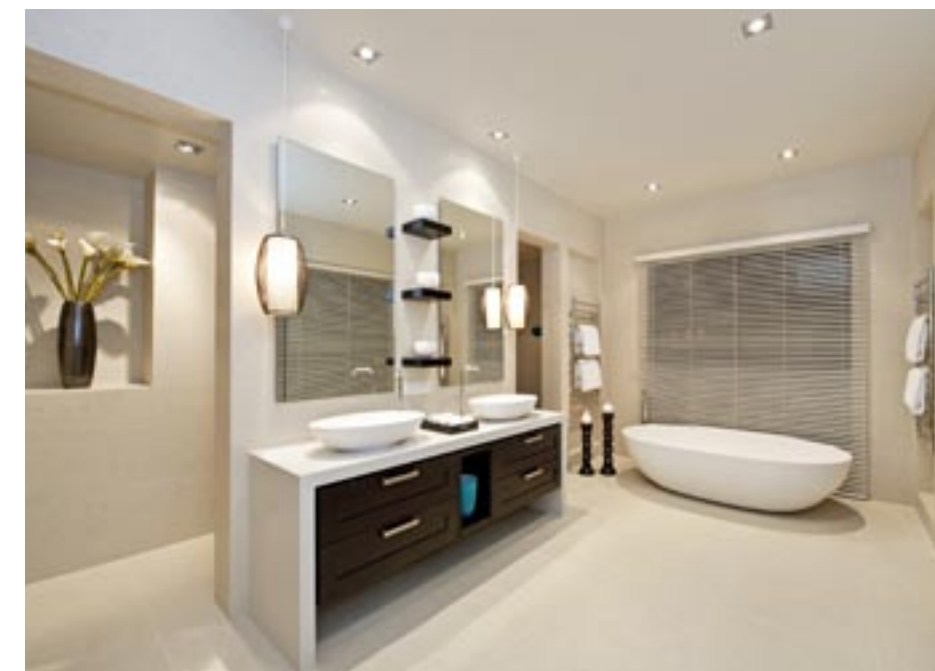
Wilson says he specified Resene Zylone Sheen VOC-free paint to ensure a professional, smooth finish. This Environmental Choice-approved paint is a low-sheen acrylic well suited to interior broadwall areas.

Timber floors further enhance the character of the house. American white oak with a chocolate stain was supplied and installed by Wood Floor Concepts.

Above left: Warm neutral tones define the formal living room. RF1000 gas fires from Real Fires are provided in both living areas, while the lanai features a stainless steel, all-weather gas fire.

Facing page, lower: A custom-designed sandstone wall, which was hand-carved in Bali, creates a dramatic focal point at the entrance.

Top and above: The kitchen and family living rooms feature dark-stained American white oak floorboards from Wood Floor Concepts. The kitchen, manufactured by Fyfe Kitchens, incorporates a CaesarStone Osprey benchtop.



Above: Resene paints include Resene Windblown Green from the Karen Walker range and Resene Triple Akaroa, which feature in the master suite. Gib Ultraline Plus plasterboard was specified to provide a high-quality finish.

Facing page, top: Walls in this guest suite are painted in Resene Dark Rum from the Resene Multi-Finish collection.

Facing page, lower: Balinese lantern pendants and dark wood shelving reinforce the resort ambience of the master suite. The vanity unit also features dark-stained American white oak.

“American white oak has a distinctive grain particularly suited to the Balinese-style architecture,” says Wilson.

The kitchen cabinetry also features dark-stained American white oak. Manufactured by Fyfe Kitchens, the kitchen incorporates a bank of cabinets, a 5.4m-long island and a large scullery.

Wilson says MDS frequently specifies Fyfe Kitchens for its new home projects.

“We have an ongoing working relationship with the company, which prides itself on great attention to detail.”

Fyfe Kitchens also manufactured the bathroom vanities and laundry.

Benchtops feature CaesarStone Osprey from Stone Warehouse. The designer says CaesarStone, which is made from natural quartz, was chosen for its clean-lined aesthetics and durability.

“We particularly like the fact that it is nonporous, never needs sealing, and will keep its good looks for years to come.”

To provide the level of comfort expected from a luxury property, the house features three gas fires from Real Fires.

Two RF1000 fires feature in the formal and informal living areas, while the lanai has an all-weather fireplace made from marine-grade stainless steel.

“The Real Fires range has the look and reliability we wanted,” says Wilson. “The fires provide the look of a traditional fire, but without the associated hassle.”

Real Fires also supplied Solitaire gas flares from the Flameboyant range.

To see other MDS projects online, visit [Trendsideas.com/go/23690a](https://www.trendsideas.com/go/23690a)

Designer: Masonry Design Solutions, phone (09) 448 1101, mobile 021 414 672. Website: www.themasonrygroup.co.nz

Builder: Glover Developments, phone (09) 447 1001.

Landscape architect: Shafer Design, phone (09) 420 4412. Website: www.shaferdesign.co.nz

Roofing: Shingle and Shake Roofing, phone 0800 SHINGLE (744 645). Website: www.shingleandshake.co.nz

Joinery: Vantage Windows North Shore, phone (09) 444 7035. Website: www.vantage.co.nz

Coloured concrete: Peter Fell Coloured Concrete, phone 0800 4 A COLOUR (422 656). Website: www.peterfell.co.nz

Paints: Resene, freephone 0800 RESENE (737 363). Website: www.resene.co.nz

Plasterboard: Gib, phone 0800 100 442. Website: www.gib.co.nz

Fireplaces: Real Fires, phone (09) 444 7331. Website: www.realfires.co.nz

Kitchen manufacturer: Fyfe Kitchens, phone (09) 520 4752. Website: www.fyfekitchens.co.nz

Benchtops: Stone Warehouse, phone (09) 415 0715. Website: www.stone.co.nz

Wood flooring: Wood Floor Concepts, phone 021 517 035. Website: www.woodfloorconcepts.co.nz