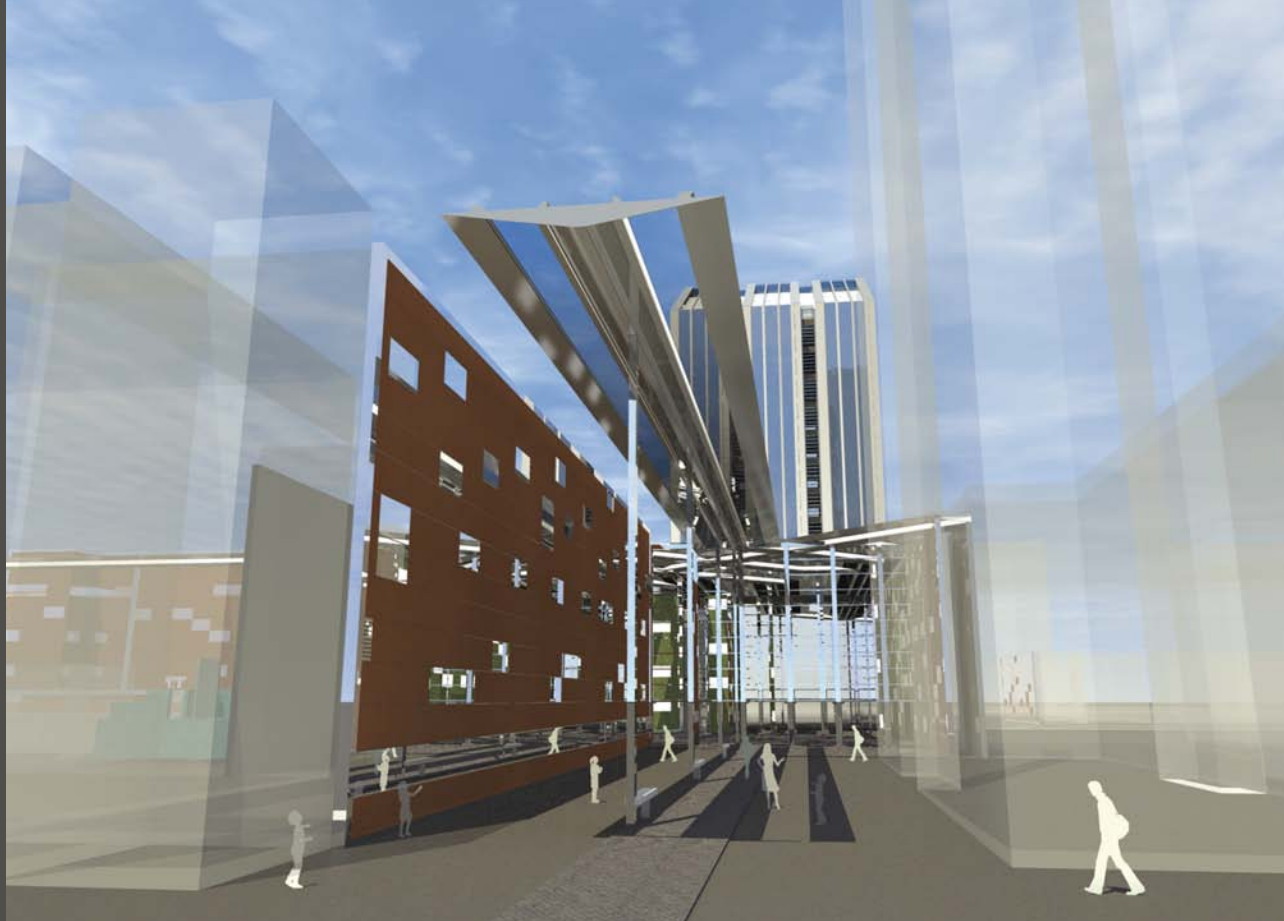


Black
White

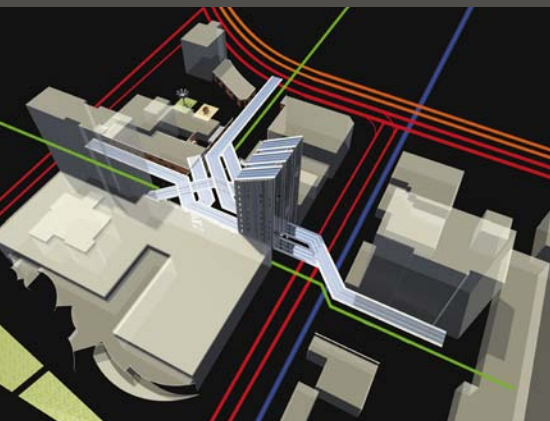
Daredevil

Felix



Sculpture 2 Urban Park

63 Worcester Street, Central City,
Christchurch



Quality urban design is essential to building active, engaged communities – the places we create should reflect the nation's culture and aspirations. Urban design challenges us to create built environments that are inclusive, and which stimulate and provoke active community participation.

The sculpture2 Urban Park aims to do this by building on the already strong artistic and cultural values that lie within the art precinct. Artistic and public interactive architectural outcome lay the foundations of the building blocks of the 'city of tomorrow' one without fossil fueled transport.

Transport reliability will be focused back on pedestrian thoroughfare and sustainable public transport methods

which this project addresses. The solution lies within pedestrian urban connections and commuter free apartment living within the central city of Christchurch. The operational masses of the complex will produce excess energy fed directly back into the grid after the complex has been provided for, along with this rain water catchment and grey water recycling and treatment see the complex becoming somewhat self sufficient and non dependable from exterior sources that we have commonly become so dependent on.

The end result is an architectural solution catered for future generations with heavy sustainability influences that will become a precedent for future inner city developments within Christchurch.

Architectural Specifier: Scott Allen

Colours Used: Resene Black White, Resene Daredevil, Resene Felix

Products Used: Resene SpaceCote Low Sheen, Resene Hi-Glo, Resene Aquaclear

 Resene Silver Streak



Resene
Total Colour
Awards 2010