



### Leichhardt Residence

The colour palette used in this job was a palette that leads the colour trends of 2011-2012. White on white combined with an indigenous colour palette - such as the burnt orange, a conflagration of heat and noise, firecracker bright and cheeky combined with earth chocolate for the contemporary twist. The white on white was a combination of one with a complexity of hues combined to create a well-balanced, ever-changing neutral and the second, graceful calm soft beige as the feminine influence. The complete combination is unique with a contemporary handle.

The philosophy for this project was to create an elegant space that showed some spunk, a bit of cheekiness and some frivolity with a touch of femininity. The space was dark in areas so the colour

had to work to bring out the features of the interior, which could have naturally been lost. Resene was used in this particular project, not only for the quality of its paint but also for its commitment to environmentally sustainable products.

As with most townhouses there is a pocket with very little natural light. One of the effects I was trying to achieve was to drag the natural light from other areas of the house into the heart, boosting the effect of natural light. The colour grouping was chosen to enhance and negate the three dimensional form of the natural features of the house. The colour integration enhanced the form and supported the overall concept. The individual colour relationship established the spatial relationship of this property.



Alabaster

Bullseye

Heirloom

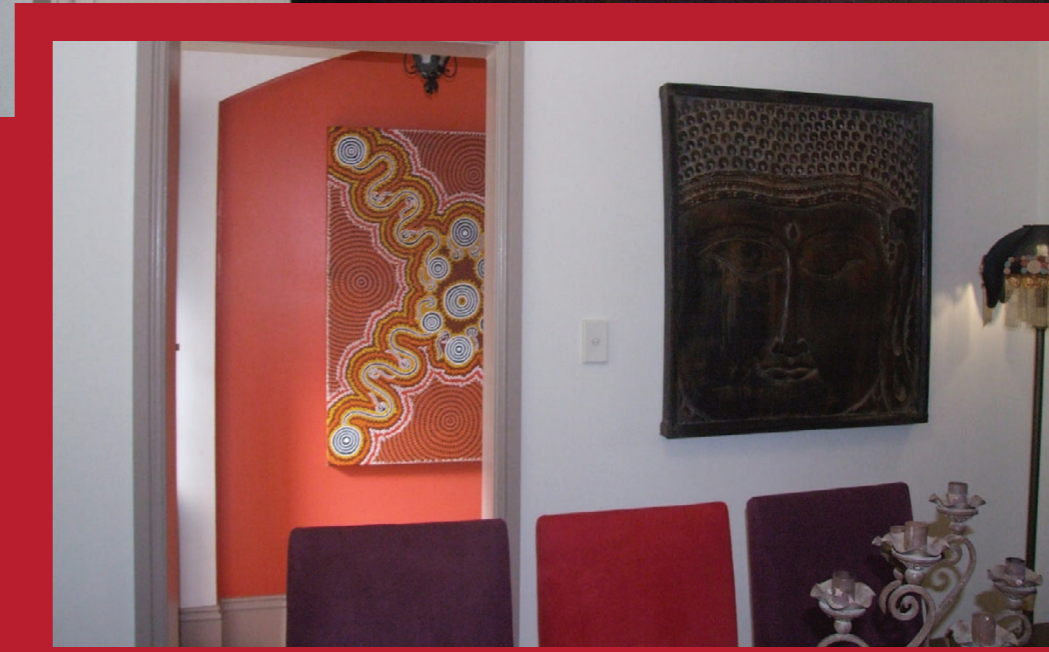
Monkey

Spanish White

Whizz Bang



Resene Rock N Roll



Interior Designer: Barbara Bromley, Bromley & Tate Interiors  
Painting Contractor: Peter Geysing

Colours Used: Resene Alabaster, Resene Bullseye, Resene Heirloom, Resene Monkey, Resene Spanish White, Resene Whizz Bang