

Resene COLOUR HOME FINALIST



Main lounge, kitchen, dining room Resene 'Soapstone'
Kitchen cabinetry and green bedroom Resene 'Soft Apple'
Pink bedroom Resene 'Cosmos'

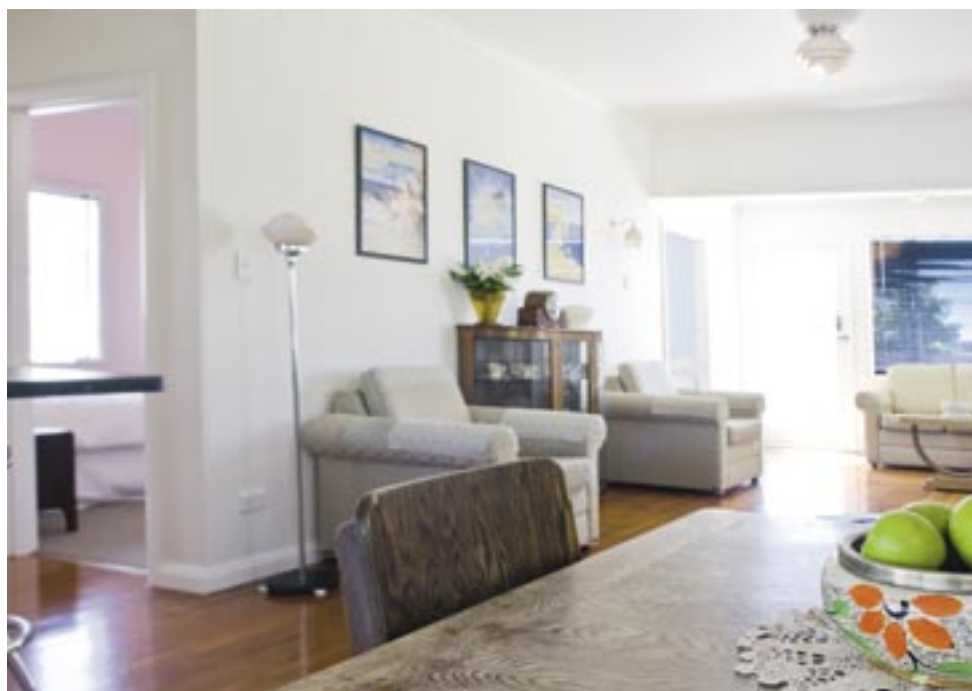


Left Kerry used Art Deco-inspired green teamed with cream on her kitchen cabinetry. **Top** Kerry Forman. **Above** Kerry was worried when the first coat of pink paint went up in the bedroom. "But with the furniture in place and a bright pink feather cushion on the bed, it's beautiful," she says. **Below** The soft glow of the pink bedroom is visible from the lounge.

The decor of this delightful little Art Deco cottage in Napier needed some attention when Brett and Kerry Forman bought it. After a carefully considered paint job, it now shines inside and out. In homage to Napier's Art Deco history, Kerry chose different Resene colours for each room and decorated the house with Art Deco accessories and furniture.

"I researched colours and accessories by looking at Art Deco books from the library and by walking around town looking at the colours of the Art Deco buildings. The Napier Municipal Theatre gave me the inspiration to use Deco pink, blue and green in the bedrooms; I love that combination. The green was my favourite, so I decided to use that on the cabinetry in the kitchen, contrasting it with cream. The hard part was getting just the right colour, but after poring over the Resene colour charts, I got there."

Now known as 'Deco by the Sea', the pretty pastels perfectly suit this holiday rental.



This photo The soft green bedroom looks gorgeous teamed with vintage furniture.

Below Kerry's furniture and objects fit the Art Deco theme of the holiday home.



If you're about to paint the inside or outside of your home with Resene paints, or have just completed a project, enter it in the *Your Home & Garden* Resene colour home awards

Enter here!



Simply fill out the entry form and post it to us, with photos and 200 words about your project, and the Resene colours you used. Alternatively, enter online at HomeSpace at www.yourhomeandgarden.co.nz, or email photos to yhg@acpmagazines.co.nz, with a 200-word description of your project. Include your name, home address, daytime phone number, and the names of the Resene colours you used. The winner gets a \$5000 cash prize. We'll also pick a home to be featured in the magazine each month and the owners will receive \$250 worth of paint vouchers from Resene.

Terms and conditions

Instructions on how to enter are part of the conditions of entry. This competition is open to New Zealand residents, except employees of ACP Media, Resene and their immediate families and agencies. Entries for the cash prize close January 12, 2009, and the winner will be notified by telephone and/or mail.

Resene YOUR HOME & GARDEN

ENTER NOW

Entrant's name (please print)

Home address

Daytime phone (0)

Resene paint colours used

I confirm that no other person can lay claim to this decorating concept

Selected entries may be displayed on the Resene website, winning a Resene Get Coloured kit worth \$75. Tick here if you don't wish your entry to be included.

Signed

Date

Post entries and photos to: *Your Home & Garden* Resene Colour Home Awards, PO Box 92512, Wellesley St, Auckland.

RESENE TIP

If you are planning something out of the ordinary, but aren't sure what colours to choose, try Resene's EzyPaint virtual painting software. You can paint a gallery image or scan, path and paint pictures of your own home. This is a great way to narrow down your colour choices before buying Resene testpots and trying out the colours in your home. Resene EzyPaint is free to download from www.resene.co.nz or you can buy a copy from Resene.

When developing a colour scheme, collect pictures of rooms that you find appealing. Experiment to determine your final selection and the appropriate accent colours. And once you think you have the colours just right, try them out using Resene testpots or a Resene testpatch.



more colours from Resene!

