

# variety on the menu

**A great kitchen needs to fulfil a** multitude of purposes. First and foremost it's a place to cook, but it's also a space to gather, talk and eat – and in this case it spills over neatly into a warm and welcoming open-plan living room. This particular space is large enough to entertain a variety of colours.

**1** Using a quiet tonal scheme of warm neutrals, the back wall in this scheme is the earthy, shingle tones of **Resene Rakaia**. On the kitchen units and cabinetry **Resene Half Rakaia** is comfortable alongside **Resene White Pointer** on the remaining walls. This neutral off-white is imbued with a hint of black and helps marry all the other colours together seamlessly. The popular **Resene Half Alabaster**, a very slightly blackened white, provides an understated note for this ceiling.

**2** This scheme is a wonderful combo of edgy industrial good looks and fresh natural touches. It starts with **Resene Aluminium** from the Resene Metallics and Special Effects range on the back wall, teamed with the splendid spicy yellow green of **Resene Pacifica** on the kitchen cabinets and island

base. **Resene Merino** in its incandescent glory is a wonderful choice for the ceiling in almost any local home, given the abundance of sunshine we enjoy. The remaining walls feature the quiet and genteel tones of **Resene Eighth Masala**.

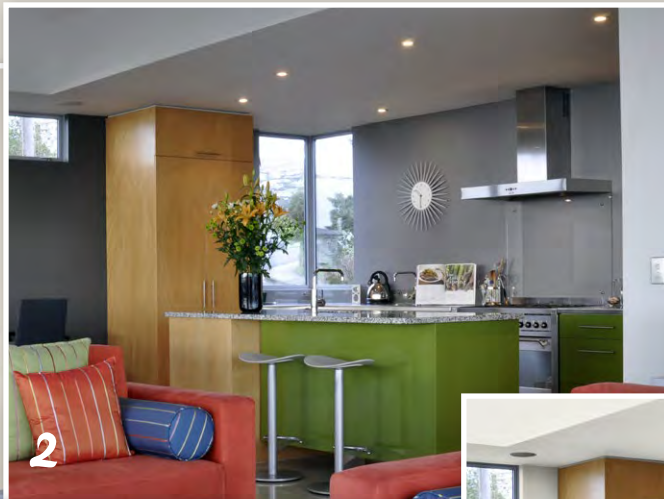
**3** We've got the blues here – but they're the happy kind, as **Resene Comfort Zone** brings the walls in this kitchen alive with its shimmering, watery qualities. Keeping in the same colour palette, **Resene Kashmir Blue** neatly grounds the cabinets. In a modern take of the classic blue-and-yellow scheme, the desert ochre yellow of **Resene Apache** brightens the walls and the lemony hints of **Resene Villa White** grace the ceiling.

**4** A smart and sassy scheme that uses a striking combo of black and red takes its lead from the vibrant sofas. **Resene Whizz Bang**, a firecracker red, on the rear wall and splashback, is tempered by the burnt deep charcoal of **Resene Ebony Clay** on the kitchen cabinets. Such a contrasting scheme needs little more than a cool **Resene Half Sea Fog** for the remaining walls and ceiling.



 Resene White Pointer

 Resene Pacifica



## *did you know...*

that you need special paints for use in kitchens? Resene recommends Resene Kitchen & Bathroom paints or for bolder colours use waterborne enamels, such as Resene SpaceCote Low Sheen or Resene Lustacryl. Use Resene Imperite for painted splashbacks.

Resene  
Whizz Bang 

