

Resene colour charts are updated regularly. This colour chart file is part of the colour chart archive, which we provide so you can view Resene colours that have been available over the years. Most older colours can still be tinted – check with your Resene ColorShop team if you need an older colour for your project.

To view the latest Resene colour charts, visit www.resene.com/colour-charts



Crown

EXTERIOR FINISHES



Fence Paint



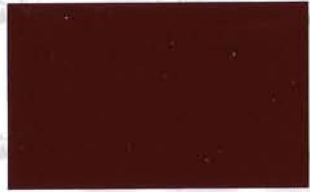
Roof Paint



Timber Colour



Crown Acrylic Exterior Roof Paint



Scoria*



Blue Clouds™



Karaka*



Aquarium™



Permanent Green*



Ironsand*



Rata™



New Denim Blue*



Rivergum*



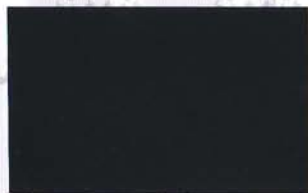
Lignite*



Pioneer Red*



Tarmac™



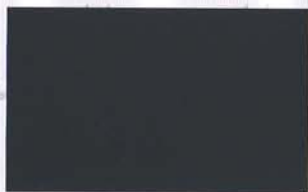
Grey Friars*



Terracotta Hit*



Lichen*



Mollusc™

Crown Acrylic Exterior Timber Colour



Charcoal™



Redwood™



Tao Grey™



Cedar™



Karaka*



Pepperwood™+



Landscape Green™



Barn Red™+



Milford Green™+



* Denotes match to a COLORSTEEL® colour

+ Also available in Crown Fence Paint

CROWN ROOF ACRYLIC GLOSS

Crown Roof Acrylic Gloss is designed to give a quick drying, durable, high-gloss finish on new primed or previously painted roofs.

Surface preparation and priming

Good surface preparation is critical to maximise the life of your roof paint system. Clean down all surfaces using Resene Roof Wash and Paint Cleaner (see Data Sheet D88), a concentrated pre-treatment for all new and old unpainted galvanised roofing and a general cleaner for previously painted surfaces including roofing. Wash down with a copious amount of freshwater.

Prime the substrate using:

1. Resene Galvo One galvanised iron primer (see Data Sheet D41), is a fast drying, anti-corrosive primer that welds itself to new or old (even lightly corroded) galvanised iron, providing an ideal surface for topcoating. Resene Galvo One is also recommended for use over aluminium. Overcoat within three months of application.
2. Resene Galvo-Prime galvanised iron primer (see Data Sheet D402), is a waterborne primer ideal for use on new galvanised iron or Zincalume. If the substrate is weathered, use only Resene Galvo One.
3. Resene Rust-Arrest anti-corrosive primer (see Data Sheet RA30), has been designed specifically for red rust problems.
4. Resene Vinyl Etch metal primer (see Data Sheet RA31), is ideal for professional application to galvanised iron, aluminium roofs and sidings and all non-ferrous surfaces.

Use Resene Membrane Roofing Primer (see Data Sheet D49), for all sheet rubber roofing systems and bituminous surfaces. For heavy duty applications, Resene can supply a full range of specialist coatings. For further information contact your local Resene ColorShop or Reseller.

Colour range

Crown Roof Paint is available in the 16 standard colours on this colour chart chosen for the durability and colour fastness of their pigments. For a wider range of roof colours see the Resene Hi-Glo colour chart.

Paint and tank water

Recommended systems for domestic water collection off roofs are Resene Galvo One or Resene Galvo-Prime with Crown Roof topcoats. Before applying Crown Roof Paint, disconnect all downpipes until after the first heavy shower has flushed away stabilising surfactants from the new paint film.

How much roof paint?

A good rule-of-thumb for calculating quantities is: your project's footprint area plus about 40% (allows for roof pitch, corrugations, soffit overhang, etc). Trough section roofing can require significantly more. Typically a complete roof paint system requires surface preparation using Resene Roof Wash and Paint Cleaner, one coat of primer and two coats of topcoat at the recommended coverage rate on the paint containers.

COLORSTEEL® colours

The Crown Roof range includes matches to the most popular COLORSTEEL® colours for trims, flashings, gutterings and repaints.

| Roof colour | Tone | Approx RV % | Roof colour | Tone | Approx RV % |
|-----------------|------|-------------|------------------|------|-------------|
| Aquarium | CG | 7 | New Denim Blue* | CG | 11 |
| Blue Clouds | CG | 8 | Permanent Green* | CN | 9 |
| Grey Friars* | CG | 8 | Pioneer Red* | CR | 10 |
| Ironsand* | CG | 9 | Rata | CR | 9 |
| Karaka* | CN | 7 | Rivergum* | CG | 16 |
| Lichen* | CG | 24 | Scoria* | CR | 8 |
| Lignite* | CN | 8 | Tarmac | CG | 24 |
| Mollusc | CG | 13 | Terracotta Hit* | CG | 20 |
| Timber colour | Tone | Approx RV % | Timber colour | Tone | Approx RV % |
| Barn Red+ | CBR | 9 | Millford Green+ | CLG | 12 |
| Cedar | CC | 9 | Pepperwood+ | CBR | 7 |
| Charcoal | CC | 4 | Redwood | CBR | 10 |
| Karaka* | CLG | 7 | Tao Grey | CC | 8 |
| Landscape Green | CLG | 10 | | | |

Tone key: CBR = Crown Barn Red CC = Crown Charcoal CN = Crown Green
CG = Crown Grey CLG = Crown Landscape Green CR = Crown Red

* Denotes match to a COLORSTEEL® colour + Available in Crown Fence Paint

Note 1: The approximate reflectance value (RV) of a colour indicates the amount of light and heat that a colour will reflect. Black has a reflectance value of 0% and absorbs all light and heat. The surfaces are consequently very dark and can get very hot. In contrast, white has a reflectance value of 100% and keeps a building light and cool. All colours fit within these two extremes.

Note 2: Tones listed above are subject to change if colours are reformulated.

Note 3: Colours may be available in selected products or sizes only. Check with Resene ColorShop or Reseller staff to ensure your selected colour is available in the product and/or size you require.

CROWN TIMBER COLOUR

Crown Timber Colour is a 100% acrylic low sheen self-sealing exterior finish for use on weatherboards, fences, pergolas and decking. Generally no primer is required except over bare metal.

Surface preparation

- Ensure surfaces are in sound condition, thoroughly sanded, dry and free from dirt, dust and loose material.
- If mould is present, treat with Resene Moss & Mould Killer (see Data Sheet D80).
- All sanding dusts may be harmful and appropriate protection should be worn. In particular dusts from old lead or chromate based paints or old building materials containing asbestos may be injurious to health if inhaled or ingested. Seek expert advice if the presence of these materials is suspected.
- For new work ensure the surface is sanded to a smooth finish and dusted off. Round all sharp edges. Ensure the surface is dry before painting.
- For repaints thoroughly sand and wash to remove all signs of surface contamination. Ensure the surface is dry before painting. Spot prime bare areas.
- Timber decking and close tight-grained timbers must be sanded to rough finish to obtain correct key.
- If timber to be painted is exhibiting sap staining or excessive tannin bleeding then it should be primed with Resene Wood Primer (see Data Sheet D40).

Priming/undercoat

- Resene TimberLock (see Data Sheet D48), is recommended on Cedar and timber joinery before priming.
- Prime timber and cementitious surfaces, if needed, with Crown Acrylic Primer Undercoat.

Application

- Maintain good ventilation throughout the drying and curing period to ensure the paint is properly cured. Poor ventilation may inhibit curing and performance.
- Do not apply at temperatures below 10°C or when temperatures are liable to drop this during the drying period. Drying is slowed by low temperatures and high humidity. Do not apply under damp conditions.
- Apply two coats at 12-14 square metres per litre by brush, roller or spray. Do not apply coating in thick coats otherwise drying and curing may be affected.
- Touch dry in 30 minutes, recoat after 2 hours.
- May be reduced with up to 5% clean water or Resene Hot Weather Additive if required. Keep thinning to a minimum.
- The Crown range of products is not suitable for use on working joinery - use Resene Enamacryl gloss waterborne enamel (see Data Sheet D309), Resene Lustacryl semi-gloss waterborne enamel (see Data Sheet D310) or Resene SpaceCote Low Sheen waterborne enamel (see Data Sheet D311).

CROWN FENCE PAINT

Crown Fence Paint is an acrylic low sheen exterior finish suitable for fences and pergolas.

- Apply two coats at 6-10 square metres per litre by brush, roller or spray.
- Touch dry in 30 minutes, recoat after 2 hours.
- May be reduced with up to 5% clean water or Resene Hot Weather Additive if required. Keep thinning to a minimum.
- Not recommended for trafficable areas such as decking, steps or floors.

Resene

the paint the professionals use

In New Zealand: 32-50 Vogel Street, Lower Hutt, PO Box 38-242, Wellington Mail Centre

Call 0800 RESENE, visit www.resene.co.nz or email us at advice@resene.co.nz

In Australia: PO Box 785, Ashmore City, Queensland 4214

Call 1800 738 383, visit www.resene.com.au or email us at advice@resene.com.au

© Copyright Resene Paints Ltd November 2005



9 418022 024446