

# Resene Metallics and special effects



Resene  
Total Colour  
System

# Resene

the paint the professionals use

Explore a range of shimmering colours with Resene's innovative special effects collection of metallic and pearlescent finishes.

Like a chameleon that changes colour according to its surroundings, light striking a surface coated with Resene special effects creates the unexpected illusion of colour movement. A building coated with Resene special effects shimmers in response to the sun's position and intensity.

With systems developed for virtually any use, Resene metallics and special effects will transform and add an extra dimension to a wide range of areas from exterior concrete and steelwork through to interior feature walls, doors, joinery and furniture.

### Best system

Resene Enamacryl Metallic, a waterborne metallic effect finish, is recommended over exterior concrete and plaster. If it is being applied over fresh concrete, Resene Limelock (see Data Sheet D809) must be applied first to cure and seal the surface, otherwise alkalinity from the concrete may attack the aluminium flake and destroy the integrity and appearance of the coating. Resene Enamacryl Metallic is also the preferred product for interior work because of its Environmental Choice approval and low VOC.

Resene Imperite I.F. 503, a spray applied high performance coating, is more durable than Resene Enamacryl Metallic in exterior situations and is the preferred exterior system for maximum durability, especially over new steelwork.

Resene metallics are different in chemistry to standard acrylics and epoxies and need to be handled with precision and care. Variations in colour can occur between Resene Enamacryl Metallic and Resene Imperite I.F. 503 due to their inherently different film forming properties.

Resene Pearl Shimmer is a waterborne pearlescent glaze, ideal for creating shimmering wall finishes and softly sparkled finishes to add visual interest and diversity to any scheme. Always used in conjunction with a tinted basecoat, Resene Pearl Shimmer is ideal for exterior and interior areas, including trim and joinery.

### Complete the look

Keeping the scheme consistent is easy with Resene ArmourCat, a range of acid-catalysed pigmented, metallic and clear finishes designed for everything from desks, shelves and shop fittings to kitchen units, timber fixtures and furniture.

Resene ArmourCat is available in an extensive selection of Resene Total Colour System hues, Resene metallics finishes and gloss and satin clears. That means perfect matches to the Resene colours you know and love. The clears may be used in isolation to bring out the grain in timber or as a finish coat over metallics for maximum effect.

Bring out the best in your carefully selected colour scheme with Resene ArmourCat true to life colours for a seamless Resene finish.

### Surface preparation

A superb finish demands excellent surface preparation and a level 5 finish is recommended when painting paperfaced plasterboard to minimise surface imperfections. A level 5 finish requires skim coating of the entire surface with Resene Broadwall Surface Prep & Seal (see Data Sheet D807) or Resene Broadwall 3 in 1 (see Data Sheet D810).

## Selecting the right system

Substrate	Resene Spec. No	Surface Prep	Primer/undercoat	Basecoat	First coat	Second coat	Optional glaze (gloss)
Exterior surfaces	25e 1.3	D83	Quick Dry D45	Lumbersider D34	Enamacryl Metallic D309a	Enamacryl Metallic D309a	Clearcoat UVS D502
Exterior surfaces	25e 1.3P	D83	Quick Dry D45	Lumbersider D34	Lumbersider D34	Pearl Shimmer D312	Clearcoat UVS D502
Exterior concrete floor	25e 2.3	D83	Armourcote 510 RA40	Imperite I.F. 503 RA81	Uracyl 400 Series Clear		
Interior Anaglypta, Scandateq, etc	25i 1.3	D84, D85	Broadwall D403	Lumbersider D34	Enamacryl Metallic D309a	Enamacryl Metallic D309a	Aquaclear D59
Interior paperfaced plasterboard	25i 1.31	D84, D85	Broadwall D403	Lumbersider D34	Enamacryl Metallic D309a	Enamacryl Metallic D309a	Aquaclear D59
Interior MDF joinery/doors	25i 1.32	D82	Quick Dry D45	Lumbersider D34	Enamacryl Metallic D309a	Enamacryl Metallic D309a	Aquaclear D59
Interior surfaces	25i 1.32P	D82 (MDF) D84, D85 (PI/Bd)	Quick Dry D45	Lumbersider D34	Lumbersider D34	Pearl Shimmer D312	Aquaclear D59
Interior concrete	25i 2.3	D83	Armourcote 510 RA40	Imperite I.F. 503 RA81	Uracyl 400 Series Clear		
Interior MDF joinery/doors	25i 2.31	D82	Refer Resene	Imperite I.F. 503 RA81	Imperite I.F. 502 Clear D82		

### Notes

- Systems will vary depending on the condition of the substrate. For example, if the substrate is porous, use Resene Sureseal in place of Resene Quick Dry and complete using your chosen basecoat and special effects topcoat.
- Durability and washability of Resene Enamacryl Metallic and Resene Pearl Shimmer are enhanced with a final coat of Resene Aquaclear gloss (interior) or Resene Clearcoat UVS gloss (exterior). Allow at least 24 hours drying if overcoating with Resene Aquaclear.
- Resene special effects may be applied over existing substrates by changing the priming requirements.
- D83 = Product Data Sheet. Obtain copies from the Resene website or your local Resene ColorShop or Reseller.
- Resene Imperite I.F. 503 must be sprayed, however the Resene Uracyl 400 series may be brushed or rolled (Resene Uracyl cannot be sprayed unless appropriate precautions are observed).
- As a result of the nature of the metallic and pearlescent flakes the underlying colour has a bearing on the final appearance. To ensure colour accuracy, a tinted basecoat is required.
- Flake pigmented products are more difficult to apply than standard decorative topcoats. See application details below. If in doubt about any aspect of application, contact Resene.

## Applying Resene metallics and special effects finishes

Correct orientation of the metallic or pearlescent flakes is critical to achieve the best finish. If the metallic or pearlescent flakes lay at opposing angles, they will reflect light at different angles, affecting the final finish. Care must be taken during application, particularly when cutting in. Avoid touch-ups as differences in appearances may be apparent.

Spraying is the preferred application method and gives the most 'stand out' effect by sitting the metallic or pearlescent flakes up on their edges. Resene special effects sprayed over textured surfaces, such as Resene Sandtex (see Data Sheet D71), give the best finish.

If professional applicators are being used to apply Resene metallics and special effects, ensure you agree upon a sample panel before the painting commences.

The use of clear overcoats can improve the cleanability and abrasion resistance of Resene special effects while adding a subtle dimension to the final finish. They also improve the colour retention of the more sensitive colours.

Sound surface preparation and application are vital to ensure you achieve the best finish. Please refer to Resene Enamacryl Metallic Data Sheet D309a, Resene Imperite I.F. 503 Data Sheet RA81, Resene Pearl Shimmer Data Sheet D312 or contact your nearest Resene ColorShop or Reseller for any assistance you may require.

## Applying Resene metallics by brush

Brushing is suitable for very small areas only. Use a synthetic filament brush and lay-off in one direction. Apply using a crows foot (criss cross) technique to achieve a paint effects finish.

See back panel for more application instructions.

## Applying Resene metallics by spray

**Spraying small areas:** Spray using an H.V.L.P. in small circular motions to get an even finish. Use a 51 thou tip with a No.10 or 11 Air Cap and thin Resene Enamacryl Metallic with 5-10% Resene Hot Weather Additive to ease the coating through the gun. For the most even finish, lay the product down in multiple thin layers holding the gun about 600mm from the surface. This gives the best metallic effect. The final layer may be sprayed as far as 800mm from the surface.

**Spraying large, smooth areas:** Use a pressure pot system set up on convention or internal mix gun. Look for an even oval fan (wet film) when setting up. Spray to achieve an even wet film over the total surface. Thin Resene Enamacryl Metallic with 5-10% Resene Hot Weather Additive to ease the coating through the gun.

**Spraying large, textured areas:** Use an airless unit or roller to apply an even first coat, then finish with light coats applied by H.V.L.P. The best results are achieved by using a soft edge tip, size Graco FF 414. Thin Resene Enamacryl Metallic with 5-10% Resene Hot Weather Additive. Remove all filters from the unit and build the film in thin layers rather than one heavy coat. If you have to stop for any length of time, open up the pressure release valve and drop the pressure on the line. This will minimise the tendency for product to pack in around the valve.

If you are a contractor unsure about a project where a Resene special effects finish has been specified, we recommend purchasing and trialling a small can of Resene Enamacryl Metallic or Resene Pearl Shimmer to enable you to determine a fair price for the job. Lighter colours will be more difficult to spray than darker colours.

## Applying Resene metallics by roller

When rolling ensure you lay-off consistently in the same direction. Cutting-in should be limited to the first coat only. Use masking tape to get close to the edges and paint opposite walls first. Use 5% Resene Hot Weather Additive for a longer open time. This will allow the flakes to settle down better. For very large areas, such as walls, mask the job into smaller sections.

**Roller application - textured areas:** Resene special effects may be roller applied to textured surfaces, however, you need to be careful to avoid runs caused by paint caught in the hollows of the texture. Lay-off in one direction.

**Roller application - doors:** For a fine finish needed for a door, lay-off with a foam roller and follow with a glaze coat for maximum durability.

## Applying Resene Pearl Shimmer

Apply the chosen basecoat tinted to your desired colour, such as Resene Lumbersider tinted to Resene Nero, and allow to dry. If applying the pearlescent finish by spray, use a high volume low pressure spray with 40' fan and a 51 needle with a 10 air cap. Thin the product up 10% using a blend of Resene Hot Weather Additive and water. Spray with a 50% overlap in a very light coat to give an even wet film and allow to dry. Provided a light coat has been applied, the finish will look mildly milky but will dry back to a clear finish with small shimmering flakes. If too much product has been applied, the end finish will be milky. If brush application is preferred, apply using a crows foot (criss cross) technique. Thicker ridges will appear milky, which is part of the effect. Roller application is not recommended as it will be difficult to get an even finish.

A further coat or coats of the pearlescent finish may be applied if a more shimmering finish is desired.



### Be PaintWise

For tips on minimising the impact of your decorating on the environment see [www.resene.com/paintwise.htm](http://www.resene.com/paintwise.htm).



### Enjoy the Resene Promise of Quality guarantee

Enjoy the Resene Promise of Quality guarantee on a wide range of Resene premium paints. See your Resene ColorShop or the Resene website for a copy.



Resene. Licensed products since 1956

### Choose to help the environment

You can minimise the effect your next decorating project has on the environment by choosing from the Resene range of Environmental Choice approved products.

# Resene

1800 738 383  
[www.resene.com.au](http://www.resene.com.au)

the paint the professionals use

0800 RESENE (737 363)  
[www.resene.co.nz](http://www.resene.co.nz)

© Copyright Resene Paints Ltd, November 2006. Accurate reproduction of the colours shown in this colour range is only available using genuine Resene premium products, tints and formulations. These are not available from other manufacturers or retailers. Unauthorised use of Resene colours and colour names breaches Resene's copyright and trademark rights. Colours may appear to vary with different gloss levels, lighting, substrate texture and application method and technique. Printed on environmentally responsible paper produced in an ISO14001 (Environmental Management System) accredited mill, from Elemental Chlorine Free (ECF) pulp sourced from sustainable forests and plantations. Printed using vegetable-based inks. Colours of images are as close as the printing process allows. Always try a Resene testpot or view a physical colour sample before making your final choice. Please recycle.



Blast Grey 1™<sub>(Shark)</sub> M34-004-071



Catch 22™<sub>(Zeus)</sub> M35-004-106



Light Year™<sub>(Woody Brown)</sub> M34-014-338



Resene Bullion



Lucifer™<sub>(Teal Blue)</sub> M40-037-226



Digital Blue™<sub>(Astronaut)</sub> M40-046-279



Funtasia™<sub>(Daisy Bush)</sub> M48-091-301



Resene Zoop De Loop



Blast Grey 2™<sub>(Tundora)</sub> M44-006-075



Basalt™<sub>(Zulu)</sub> M43-005-325



Galaxy™<sub>(Cosmic)</sub> M50-027-007



Spark™<sub>(Domino)</sub> M45-033-062



Pioneer™<sub>(Espirit)</sub> M46-015-178



Sputnik™<sub>(True Blue)</sub> M37-031-265



Glitterbug™<sub>(Pirate)</sub> M50-100-022



Blast Grey 3™<sub>(Friar Grey)</sub> M55-002-072



Deep Space™<sub>(Masala)</sub> M51-009-077



Copperhead™<sub>(Lumberjack)</sub> M47-038-039



Copper Fire™\*<sub>(Wild West)</sub> M57-064-045



Mica™<sub>(Mangrove)</sub> M37-011-188



Time Warp™<sub>(Astronaut)</sub> M49-055-264



Bedazzle™<sub>(Rouge)</sub> M54-081-355



Zoop De Loop™<sub>(Tory Blue)</sub> M52-085-267



Aluminium™<sub>(Stack)</sub> M71-005-087



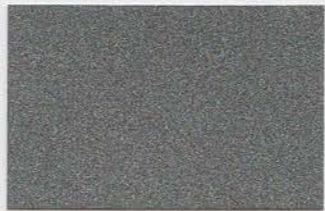
Pure Pewter™<sub>(Chicago)</sub> M60-015-085



Copper Fire™\*<sub>(Wild West)</sub> M57-064-045



Blast Yellow™<sub>(Quasar)</sub> M48-058-063



Magnetic™<sub>(Raptor)</sub> M46-016-114



Dalek™<sub>(Kashmir Blue)</sub> M46-028-246



Enchanted™<sub>(Rouge)</sub> M60-078-344



Silver Aluminium™<sub>(Silver Chalice)</sub> M83-003-232



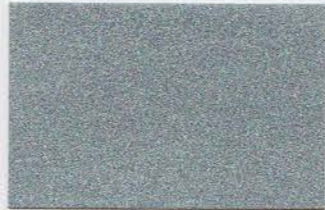
Silver Steel™<sub>(Half Stack)</sub> M67-001-338



Magma™\*<sub>(Root Beer)</sub> M59-074-060



Gold Dust™\*<sub>(Apache)</sub> M69-066-078



Obelisk™<sub>(Blue Smoke)</sub> M64-015-199



Scotty Silver™<sub>(Shinto)</sub> M76-026-239



Sugar And Spice™<sub>(Strikemaster)</sub> M67-062-336



Yehaa™<sub>(Optimist)</sub> M59-082-236



Resene Blast Grey 3



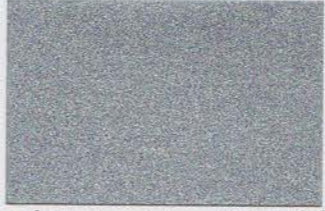
Proton™<sub>(Copyrite)</sub> M80-013-107



Bullion™\*<sub>(Porsche)</sub> M67-080-068



Stun™<sub>(Coriander)</sub> M78-034-108



Infinity™<sub>(Regent Grey)</sub> M67-010-213



Resene Allusive



Pearl Shimmer™<sub>(Nero)</sub> M36-007-258



Go Go Go™<sub>(Anise)</sub> M73-080-131

A basecoat is recommended for all Resene Metallics and special effects colours. The recommended basecoat is shown in brackets after the colour name. Resene Pearl Shimmer may be applied over a variety of basecoat colours for different effects. It is shown here over Resene Nero.

The finish of Resene Metallics and special effects colours varies depending on application technique, substrate texture, product and lighting. Always check and agree a sample area before completing the full project.

\* This colour requires special tinters, available only on request.