

Resene colour charts are updated regularly. This colour chart file is part of the colour chart archive, which we provide so you can view Resene colours that have been available over the years. Most older colours can still be tinted – check with your Resene ColorShop team if you need an older colour for your project.

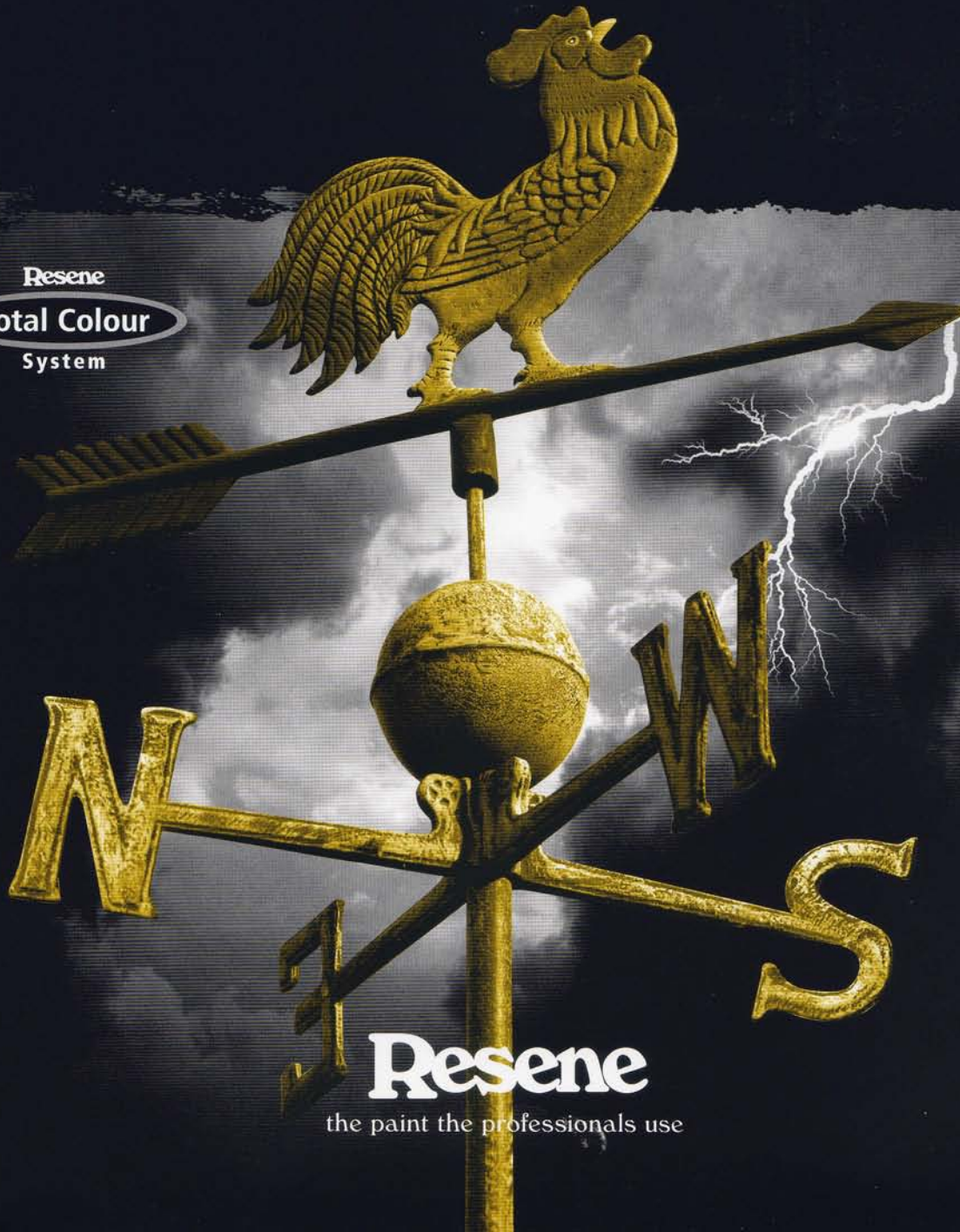
To view the latest Resene colour charts, visit [www.resene.com/colour-charts](http://www.resene.com/colour-charts)

# Resene Roof colour systems

Resene

Total Colour

System



Resene

the paint the professionals use





Rustic Red™ R29-033-024



Cave Rock™cc BR34-009-020  
(CB Loft)



Ironsand™cc\* N36-003-056  
(CS Ironsand)



Palm Green™cc G34-023-164



Karakas™cc G31-010-106  
(CS Karaka)



Vulcan™ M32-008-267



Bright Charcoal™ M29-002-272



All Black™cc N25-001-264  
(CS Ebony)



Scoria™cc R36-049-033  
(CS Scoria)



Rattlesnake™ M34-015-036



Winchester™ M50-006-077



Botanic™cc G35-033-153  
(CS Kelp)



Squall™cc N38-006-103  
(CS Woodland Grey/CS Thunder Grey)



High Tide™cc B36-011-261  
(CB Ironstone/CS Indigo Blue)



Grey Friars™cc N35-004-253  
(CS Grey Friars)



Nocturnal™cc N34-002-275  
(CB Monument)



Red Planet™cc R35-054-031  
(CB Manor Red)



Lignite™cc\* BR34-021-058  
(CS Lignite)



Metallic Bronze™ M40-023-069



Permanent Green™cc G37-031-154  
(CB Cottage Green/CS Permanent Green)



Heavy Metal™ M37-011-109



New Denim Blue™cc B39-012-250  
(CS New Denim Blue)



Cathedral™ M41-002-169



Steel Grey™cc N42-006-256



Metallic Copper™ M40-056-036



Old Copper™ M45-048-056



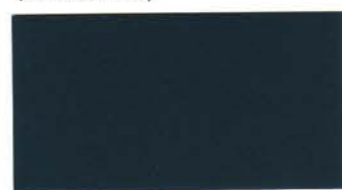
Groundbreaker™cc BR45-021-070  
(CB Jasper/CS Sorrell)



Seaweed™cc G38-025-121



Jurassic™cc G40-011-170  
(CS Gable Green)



Coast™cc B35-023-248  
(CB Deep Ocean/CS Storm Blue)



Bright Grey™ M47-006-264



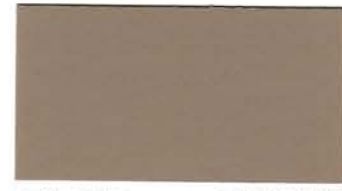
Half Tuna™cc N49-007-256



Red Oxide™ R35-080-034



Lichen™cc Y56-030-087  
(CS Lichen)



Outback™cc BR64-029-071  
(CS Stone)



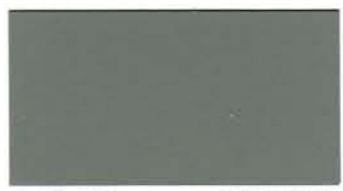
Gecko™cc G49-031-149  
(CS Spring Green)



Trainspotter™ M40-010-131



Blue Zodiac™ M37-024-268



Latitude™cc N57-006-142  
(CB Windspray/CS Smokey)



Aluminium™ M74-003-235



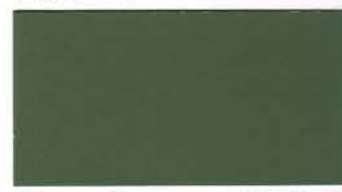
Pioneer Red™ R39-075-033  
(CS Pioneer Red)



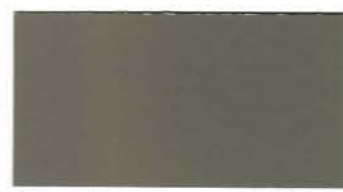
Castlepoint™cc BR70-050-078  
(CB Sandbank/CS Straw)



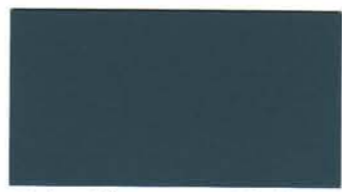
Shelter™cc BR75-031-078  
(CB Paperbark)



Rivergum™cc G47-022-138  
(CB Wilderness/CS Rivergum)



Climate™cc G55-014-099  
(CB Bushland)



Explorer™cc B43-024-232  
(CS Pacific Blue)



Gauntlet™cc N57-006-087  
(CS Sandstone Grey)



Atmosphere™cc N76-004-127  
(CB Shale Grey/CS Gull Grey)



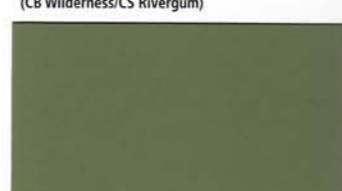
Dawnbreaker™\* R44-074-036  
(CB Headland/CS Maple)



Desert Sand™cc BR71-036-074  
(CS Desert Sand)



Toi Toi™ Y77-033-087  
(CS Ivory)



Paddock™cc G56-028-117  
(CB Pale Eucalypt/CS Mist Green)



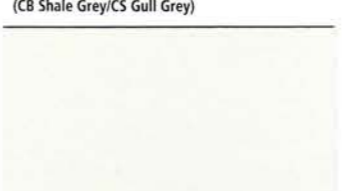
Settlement™cc BR70-014-075  
(CB Dune)



Undercurrent™cc B49-037-228  
(CS Azure)



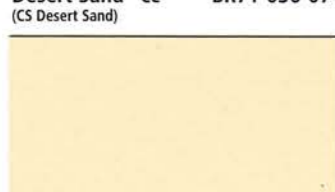
Mid Grey™cc N58-005-255



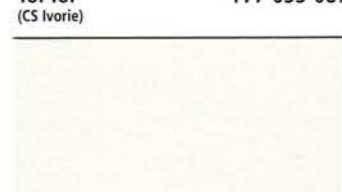
Helium™ G89-013-107  
(CS Cloud)



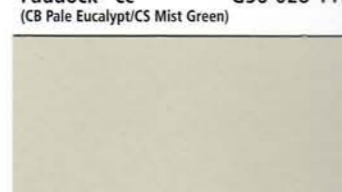
Twizel™\* O51-083-050  
(CS Terracotta)



Smooth Cream™ Y84-041-081  
(CB Classic Cream/CS Smooth Cream)



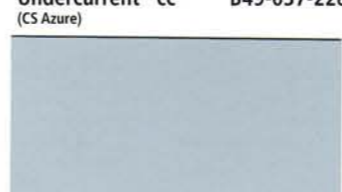
Sponge™ G90-012-101  
(CS Foam)



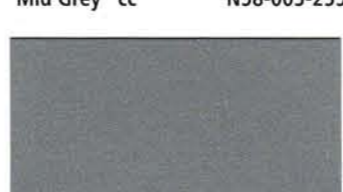
Bone White™cc G79-015-099  
(CS Bone White)



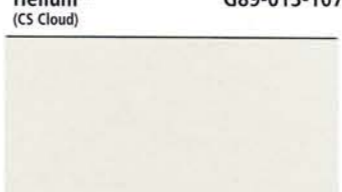
Overland™cc Y76-021-088  
(CB Evening Haze)



Forecast™cc B76-010-243



Sword™ M66-002-254



Titania™ G84-012-095  
(CB Surfmist/CS Titania)

### Colour chip isolator

Detach and turn over isolator then place over selected colour to view your choice on a neutral background without it being affected by surrounding colours.



### Colour chip isolator

Detach and place over selected colour to view your choice on a neutral background without it being affected by surrounding colours.



### Keep your cool with Resene Cool Colours

Resene Cool Colours allow you to select your favourite dark colours and keep your cool. Dark colours on areas, such as roofing, are suntraps soaking in the sun's rays placing significant relentless stress on the coating and the substrate. All dark colours absorb a lot of light. This in isolation is not an issue however in combination with the light absorption dark colours also absorb heat from the infra-red rays of the sun causing significant temperature build up on the surface.

The unique formulation and materials of Resene Cool Colours allows them to absorb light so they appear visually the same but simultaneously reflect a large proportion of the heat falling on them keeping the surfaces significantly cooler than their standard counterparts. In essence, the colours work by reflecting energy in the near and far infra-red region of the spectrum even though they absorb strongly in the visible region.

The end result being that a Resene Cool Colour will look the same as a standard colour but surface heat will build up slower and to a significantly lower level than a 'not so cool' traditional colour.

In hot summer conditions Resene Cool Colours will help keep the roof temperature down, minimising the energy required to keep homes and buildings maintained at a comfortable temperature. A secondary benefit is that there will be reduced stress on the coating and substrate.

Resene Cool Colour technology performs optimally on dark colours that are the most prone to heat build-up, which makes them ideally suited for dark roofing colours.

See colours marked "cc" on this chart.

CC = Also available as a Resene Cool Colour. A change in tone or product may be required for some colours to achieve a Resene Cool Colour effect.

CB, CS: Resene colours with COLORBOND® and/or COLORSTEEL® noted below them in brackets have been colour matched to the equivalent COLORBOND® and/or COLORSTEEL® colour samples in 2009. If an exact match is required we recommend you check your chosen colour against the actual sample of the product prior to purchasing. COLORBOND® is a registered trademark of Bluescope Steel Limited. COLORSTEEL® is a registered trademark of New Zealand Steel Limited.

\* = Available in 10 litre pack size for orders 200L or over.



**Before you choose a Resene roof paint system, check the condition of your roof. For example, is it new, weathered or rusty? Details like these will help you get the right advice when you visit your local Resene ColorShop or Reseller, and a better result when you come to paint.**

Resene Summit Roof is a unique waterborne satin for ease of application and maximum life over well weathered COLORBOND®, COLORSTEEL®, properly prepared metal surfaces and cementitious surfaces. Resene Summit Roof solid colours may be applied directly over the following substrates: new previously uncoated galvanised iron, new aluminium, new previously uncoated Zincalume or sound cementitious surfaces. For best protection, prime the substrate first. New unweathered COLORBOND® or COLORSTEEL® must either be lightly sanded, or allowed to undergo direct weathering for a minimum period of one month before application of Resene Summit Roof.

Resene Summit Roof mix and metallic colours are not designed for direct to substrate application.

### Paint and tank water

Recommended systems for domestic water collection off roofs are Resene Galvo One or Resene Galvo-Prime with Resene Summit Roof, Resene Hi-Glo or Resene Mica Bond. Disconnect all downpipes before applying Resene roof paint. Reconnect downpipes after the first heavy showers have flushed away stabilising surfactants from the new paint film.

### How much roof paint?

A good rule-of-thumb guide for calculating quantities is: your house's floor area plus about 40% (allows for roof pitch, corrugations, soffit overhang, etc). Trough section roofing can require significantly more. Typically a complete roof paint system requires surface preparation using Resene Roof Wash and Paint Cleaner, one coat of primer and two coats of topcoat at the recommended coverage rate specified on the product packaging.

### Colour range

The colours on this chart have been chosen for the durability and colour-fastness of their pigments. You can also choose from many other colours found on other Resene colour charts.

Resene roof paints are available colour matched to COLORBOND® or COLORSTEEL® colours for trims, flashings, gutterings and repaints. For heavy duty applications, Resene can supply a full range of specialist coatings. For further information call your local Resene ColorShop or Reseller.

### Added protection

In common with all surface coatings, the colour of your paint finish may be affected by U.V. light. Resene uses high quality pigments, but even these are liable to change after constant exposure to sunlight. Any changes will be gradual, but after a few years the difference between shaded and exposed areas may become noticeable.

Resene Sun Defier U.V. protective glaze (see Data Sheet D502) may be used as a finish coat over freshly painted bright organic hues and shades to protect these more vulnerable pigments against fading.

### Put your colour to the test

No matter how you select your colours, always use testpots to confirm your choices in the area you are planning to paint. Resene testpots are available from your local Resene ColorShop or Reseller or you can order online from the Resene website.

### Keep it looking good

Annual washing will help maintain the fresh appearance of your paintwork. Follow the recommendations in the Resene Caring for your paint finish brochure or on the Resene website to keep your paint finish looking its best.

### Be PaintWise

For tips on minimising the impact of your decorating on the environment see [www.resene.co.nz/paintwise.htm](http://www.resene.co.nz/paintwise.htm).

### Enjoy the Resene Promise of quality

Enjoy the Resene Promise of quality on a wide range of Resene premium paints. See your Resene ColorShop or the Resene website for a copy.

### Choose to help the environment

You can minimise the effect your next decorating project has on the environment by choosing one of the Resene range of Environmental Choice approved products.

**In Australia:**  
PO Box 785, Ashmore City,  
Queensland 4214  
Call 1800 738 383, visit [www.resene.com.au](http://www.resene.com.au)  
or email us at [advice@resene.com.au](mailto:advice@resene.com.au)

**Resene**  
the paint professionals use

**In New Zealand:**  
PO Box 38242, Wellington Mail Centre,  
Lower Hutt 5045  
Call 0800 RESENE (737 363), visit [www.resene.co.nz](http://www.resene.co.nz)  
or email us at [advice@resene.co.nz](mailto:advice@resene.co.nz)

| Colour          | Colour Code     | Tone | Approx LRV% | COLORBOND® equivalent <sup>6</sup> | COLORSTEEL® equivalent <sup>6</sup> | RGB         |
|-----------------|-----------------|------|-------------|------------------------------------|-------------------------------------|-------------|
| All Black       | CC N25-001-264  | CB   | 4           | -                                  | Ebony                               | 24 24 24    |
| Aluminium       | M74-003-235     | AL   | 46          | -                                  | -                                   | 132 135 137 |
| Atmosphere      | CC N76-004-127  | W    | 49          | Shale Grey                         | Gull Grey                           | 168 170 166 |
| Blue Zodiac     | M37-024-268     | ME   | 10          | -                                  | -                                   | 60 67 84    |
| Bone White      | CC G79-015-099  | W    | 55          | -                                  | Bone White                          | 184 183 166 |
| Botanic         | CC G35-033-153  | G    | 9           | -                                  | Kelp                                | 33 64 43    |
| Bright Charcoal | M29-002-272     | ME   | 6           | -                                  | -                                   | 51 52 53    |
| Bright Grey     | M47-006-264     | ME   | 16          | -                                  | -                                   | 87 89 93    |
| Castlepoint     | CC BR70-050-078 | L    | 41          | Sandbank                           | Straw                               | 173 149 105 |
| Cathedral       | M41-002-169     | ME   | 12          | -                                  | -                                   | 75 77 74    |
| Cave Rock       | CC BR34-009-020 | MI   | 8           | Loft                               | -                                   | 55 44 44    |
| Climate         | CC G55-014-099  | MI   | 23          | Bushland                           | -                                   | 110 109 94  |
| Coast           | CC B35-023-248  | MI   | 8           | Deep Ocean                         | Storm Blue                          | 36 52 66    |
| Dawnbreaker     | R44-074-036     | U    | 14          | Headland                           | Maple                               | 129 49 37   |
| Desert Sand     | CC BR71-036-074 | P    | 42          | -                                  | Desert Sand                         | 173 152 122 |
| Explorer        | CC B43-024-232  | MI   | 13          | -                                  | Pacific Blue                        | 55 78 89    |
| Forecast        | CC B76-010-243  | W    | 50          | -                                  | -                                   | 162 170 177 |
| Gauntlet        | CC N57-006-087  | MI   | 25          | -                                  | Sandstone Grey                      | 113 111 105 |
| Gecko           | CC G49-031-149  | MI   | 18          | -                                  | Spring Green                        | 69 99 75    |
| Grey Friars     | CC N35-004-253  | MI   | 8           | -                                  | Grey Friars                         | 49 52 54    |
| Groundbreaker   | CC BR45-021-070 | MI   | 15          | Jasper                             | Sorrell                             | 90 79 64    |
| Half Tuna       | CC N49-007-256  | L    | 18          | -                                  | -                                   | 85 88 92    |
| Heavy Metal     | M37-011-109     | ME   | 10          | -                                  | -                                   | 70 71 62    |
| Helium          | G89-013-107     | W    | 75          | -                                  | Cloud                               | 216 217 200 |
| High Tide       | CC B36-011-261  | MI   | 9           | Ironstone                          | Indigo Blue                         | 50 55 63    |
| Ironsand        | CC N36-003-056  | D    | 9           | -                                  | Ironsand                            | 57 55 53    |
| Jurassic        | CC G40-011-170  | MI   | 11          | -                                  | Gable Green                         | 55 68 62    |
| Karaka          | CC G31-010-106  | G    | 7           | -                                  | Karaka                              | 45 45 36    |
| Latitude        | CC N57-006-142  | MI   | 25          | Windspray                          | Smoky                               | 109 114 108 |
| Lichen          | CC Y56-030-087  | MI   | 24          | -                                  | Lichen                              | 122 112 85  |
| Lignite         | CC BR34-021-058 | D    | 8           | -                                  | Lignite                             | 66 52 41    |
| Metallic Bronze | M40-023-069     | ME   | 11          | -                                  | -                                   | 85 74 60    |
| Metallic Copper | M40-056-036     | ME   | 12          | -                                  | -                                   | 110 61 52   |
| Mid Grey        | CC N58-005-255  | MI   | 26          | -                                  | -                                   | 113 116 118 |
| New Denim Blue  | CC B39-012-250  | MI   | 11          | -                                  | New Denim Blue                      | 57 65 73    |
| Nocturnal       | CC N34-002-275  | MI   | 8           | Monument                           | -                                   | 47 49 49    |
| Old Copper      | M45-048-056     | ME   | 15          | -                                  | -                                   | 115 80 59   |
| Outback         | CC BR64-029-071 | L    | 32          | -                                  | Stone                               | 149 130 108 |
| Overland        | CC Y76-021-088  | W    | 49          | Evening Haze                       | -                                   | 178 170 148 |
| Paddock         | CC G56-028-117  | MI   | 24          | Pale Eucalypt                      | Mist Green                          | 102 113 86  |
| Palm Green      | CC G34-023-164  | G    | 8           | -                                  | -                                   | 32 57 44    |
| Permanent Green | CC G37-031-154  | G    | 9           | Cottage Green                      | Permanent Green                     | 37 68 47    |
| Pioneer Red     | R39-075-033     | RO   | 11          | -                                  | Pioneer Red                         | 100 38 32   |
| Rattlesnake     | M34-015-036     | ME   | 8           | -                                  | -                                   | 70 56 53    |
| Red Oxide       | R35-080-034     | RO   | 9           | -                                  | -                                   | 93 31 30    |
| Red Planet      | CC R35-054-031  | RO   | 9           | Manor Red                          | -                                   | 90 32 25    |
| Rivergum        | CC G47-022-138  | MI   | 16          | Wilderness                         | Rivergum                            | 73 89 71    |
| Rustic Red      | R29-033-024     | RO   | 6           | -                                  | -                                   | 58 24 26    |
| Scoria          | CC R36-049-033  | RO   | 9           | -                                  | Scoria                              | 83 38 32    |
| Seaweed         | CC G38-025-121  | O    | 10          | -                                  | -                                   | 55 65 42    |
| Settlement      | CC BR70-014-075 | W    | 41          | Dune                               | -                                   | 161 152 139 |
| Shelter         | CC BR75-031-078 | P    | 48          | Paperbark                          | -                                   | 180 161 131 |
| Smooth Cream    | Y84-041-081     | W    | 65          | Classic Cream                      | Smooth Cream                        | 218 199 156 |
| Sponge          | G90-012-101     | W    | 76          | -                                  | Foam                                | 220 219 205 |
| Squall          | CC N38-006-103  | MI   | 10          | Woodland Grey                      | Thunder Grey                        | 58 59 53    |
| Steel Grey      | CC N42-006-256  | MI   | 12          | -                                  | -                                   | 67 70 75    |
| Sword           | M66-002-254     | AL   | 36          | -                                  | -                                   | 128 130 132 |
| Titania         | G84-012-095     | W    | 67          | Surfmist                           | Titania                             | 202 199 185 |
| Toi Toi         | Y77-033-087     | P    | 51          | -                                  | Ivorie                              | 183 173 139 |
| Trainspotter    | M40-010-131     | ME   | 11          | -                                  | -                                   | 68 73 63    |
| Twizel          | O51-083-050     | D    | 20          | -                                  | Terracotta                          | 142 80 55   |
| Undercurrent    | CC B49-037-228  | MI   | 17          | -                                  | Azure                               | 54 92 108   |
| Vulcan          | M32-008-267     | ME   | 7           | -                                  | -                                   | 54 56 60    |
| Winchester      | M50-006-077     | AL   | 19          | -                                  | -                                   | 81 78 74    |

**Key:** AL = Aluminium CB = Cool black G = Green L = Light  
M = Mid ME = Metallic MI = Metallic MI = Mid grey O = Ochre  
P = Pastel RO = Red oxide W = White U = Ultra deep  
CC = Also available as a Resene Cool Colour. A change in tone or product may be required for some colours to achieve a Resene Cool Colour effect.

**Note 1:** The approximate light reflectance value (LRV) of a colour indicates the amount of visible light that a colour will reflect. Black has a light reflectance value of 0% and absorbs all light. The surfaces are consequently very dark and can get very hot. In contrast, white has a light reflectance value of 100% and keeps a building light and cool. All colours fit within these two extremes. Resene Cool Colours look the same as standard colours but are formulated to reflect the sun's energy and have better heat and total solar reflectance (TSR) properties. They reflect the same visible light as a standard colour but reflect significantly more heat, keeping the coating, substrate and building cooler.

**Note 2:** Mid to dark colours are not suitable for some exterior substrates and if used may cause damage to the substrate, such as warping, checking and premature failure. Always check with the substrate supplier prior to commencing any work to ensure colour selections fit within their guidelines. Resene also manufactures Resene Cool Colour technology and this may increase the colour range that can be suitable over some heat sensitive substrates - refer Resene for further information.

**Note 3:** Tones listed above are subject to change if colours are reformulated.

**Note 4:** Colours may be available in selected products or sizes only. Check with Resene ColorShop or Reseller staff to ensure your selected colour is available in the product and/or size you require.

**Note 5:** Solid colours on this colour chart are finished with Resene SpaceCoat Low Sheen waterborne enamel.

**Note 6:** Resene colours with COLORBOND® and/or COLORSTEEL® noted beside them have been colour matched to the equivalent COLORBOND® and/or COLORSTEEL® colour samples in 2009. If an exact match is required we recommend you check your chosen colour against the actual sample of the product prior to purchasing. COLORBOND® is a registered trademark of Bluescope Steel Limited. COLORSTEEL® is a registered trademark of New Zealand Steel Limited.

