



Fashion house

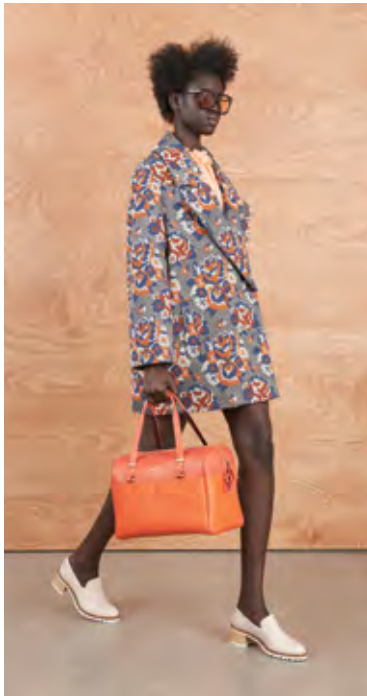
Your interior colour palette can come from anywhere – or, in this case, what you wear. We've looked to local designers' SS15 collections for some good looking interior design inspiration.

Styling **Amber Armitage & Alice Lines**
Photography **Melanie Jenkins**



COLOUR PLAY We created this rose motif, and Your Decal Shop turned it into a stencil for us. Then we stuck it on the wall and painted in the design, using Resene New York Pink, Resene Wax Flower and Resene Celestial Blue from the Karen Walker Paints collection. *Check out our video to see how we created this look at homestyle.co.nz.*





THE LOOK Karen Walker The League SS15 collection. Lobbie jacket, \$1060; Benah for Karen Walker Andie duffel, \$605; Beau Coops for Karen Walker loafers, \$430, karenwalker.com.



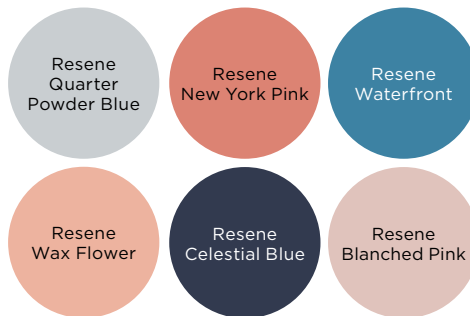
Mini Andie duffel in pink and tan, \$505, karenwalker.com

LADY BOSS

The fashion world has been buzzing with feminist tones recently, and we're happy to embrace the mood in interiors too. Inspired by Karen Walker's latest collection, The League, we've created a space for the busy business girl who likes her classic furniture served with a side of modern design. To avoid an overtly 'girly' look, soft pinks are used as an accent, rather than a base, within a palette of muted blues, grey and navy.



Notch porcelain pendant lights, from \$288 each, well-groomed-fox.com



Normann Copenhagen Block table, \$577, designdenmark.co.nz



Coco Flip Puku ottoman, \$1233, cultdesign.co.nz



Kartell I-Shine vase, \$245, backhousenz.com



Captain Peacock three-seater sofa, \$2800, pompomhome.co.nz

ALSO IN THE SCENE OPPOSITE Gidon Bing vase, \$140, Aesop Resurrection Aromatique hand balm, \$3; simonjamesdesign.com. Italian linen cushions with feather inners, \$110 each, madderandrouge.co.nz. Stencil created with yourdecalshop.co.nz. Resene paints, see colours above, resene.co.nz. Books, magazines and cups stylist's own.



THE LOOK Kowtow Solid Light SS15 collection. Building Block singlet, \$89; Slide skirt, \$169, kowtowclothing.com.



Coco Flip pendant light by Kate Stokes, \$1233, cultdesign.co.nz



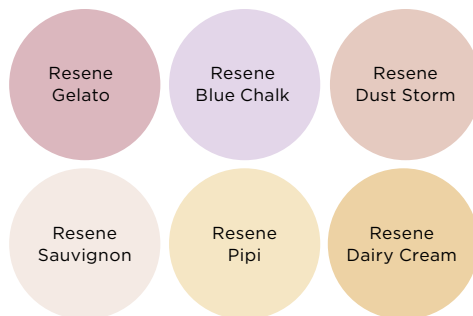
Organic bowls, from \$7; Paddle Board, \$49, nest-direct.com



Studio ceramics pink mug, \$26.40, oragallery.co.nz

REFRACTED LIGHT

This kitchen setting was inspired by Kowtow's new collection, Solid Light, which explores ideas around light refraction. We used soft, warm tones and structured shapes as a starting point, then translated them into an oversized geometric wall mural, complemented by natural wood. The result is a space that exudes a sense of calm, while letting the colours sing.



White enamel cutlery, from \$10 each, nest-direct.com



London chair (light grey felt and 2121/oak), \$831, boconcept.com



Henry Wilson A3 ash table, \$1218; A3 mini stool, \$586, cultdesign.co.nz

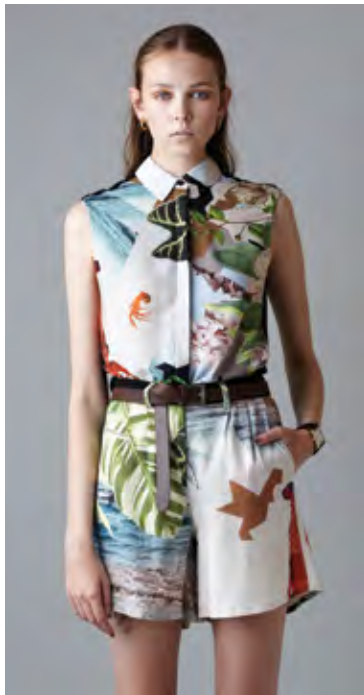
ALSO IN THE SCENE OPPOSITE Organic side plate, \$16 each; Opal vases, from \$24 each, nest-direct.com. Colander Blanc linen tea towel, \$37, tessuti.co.nz. Ikea Strömby series frame, \$119, livingconcepts.co.nz. Resene paints, see colours above, resene.co.nz.

COLOUR PLAY Creating a geometric wall mural is easy. Start with a background coat of Resene Sauvignon, then use painters' tape to mask out the design, before painting in the triangular shapes. Use a subtle tone-on-tone colour palette to create a Scandinavian feel. Check out the video to see how we created this look at homestyle.co.nz.





COLOUR PLAY Dark green stripes in Resene Kereru were painted across a Resene Pale Leaf wall to echo the light and dark shades of a leaf. Use painters' tape to mask out your stripes, keeping in mind that an organic approach to line width is more forgiving than a measured design.



THE LOOK Salasai The Lovelorn Lobster SS15 collection. Artless blouse \$275; Scallop short, \$230, salasai.com.



Ourliu Orchid cushion, \$119, teapea.co.nz



Heico Pineapple lamp, \$225, teapea.co.nz

LIVING ROOM TROPICS

Salasai look to the tropics with their SS15 collection – and we’re taking a leaf out of their book with this conservatory-style nook. To make a colourful feature of this corner space, we paired Resene Pelorous with Resene Pale Leaf on the walls, then added a graphic pattern to accentuate the botanical look. Plants make great colour companions, especially when housed in brightly-hued vessels. Try painting your own in botanical colourways.



Cotton weave throws, \$59 each, paperplanestore.com



Established & Sons Store vessels, from \$142, simonjamesdesign.com



Maka Emali handwoven basket, \$59.90, ikoiko.co.nz



Max Lamb Last stool, \$650, everyday-needs.com



Union shelf, \$195, trestleunion.co.nz



Crochet cactus skinny baroque, \$115

ALSO IN THE SCENE OPPOSITE Black macrame hanger, \$150, thedepartmentstore.co.nz. Geo wooden hooks, \$35 (small); \$39 (large), teapea.co.nz. Serax coloured terracotta pots, from \$12, fatherrabbit.com. Mima + Moo macrame kitset, \$29.90, ikoiko.co.nz. Vetyver Bouquet glass candle, \$149, curionoir.com. Small facature vase by Phil Cuttance, \$386, douglasandbec.co.nz. Quartz crystal and geode bookends, POA, crystalmountain.co.nz. Yellow linen cushion, \$44.90, cittadesign.com. Handwoven telephone wire cone bowl (used as a planter), \$255, limpopo-store.com. Resene paints, see colours above, resene.co.nz. Books and plants, stylist’s own.



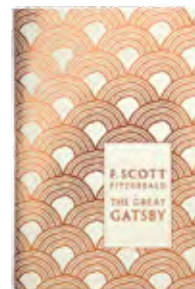
THE LOOK Kate Sylvester's Sylvester SS15 collection. Sylvester Chevron bathers, \$195; Sylvester Chevron skirt, \$225, katesylvester.com.



Assemblages leather straps by Lightly, \$290.34, cultdesign.co.nz. Pine shelves, \$60 (pair), trestleunion.co.nz

SUN SHOWER

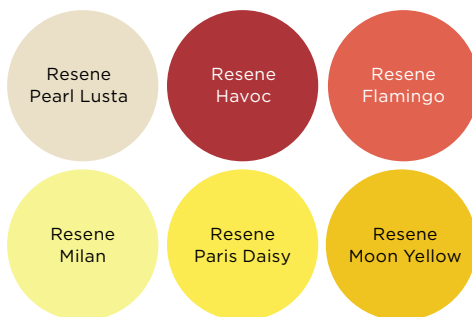
With summer escapes just around the corner, Kate Sylvester's SS15 Sylvester collection inspired us to create a sunny space that mixes sophistication with fun. Beginning with a step outside the colour comfort zone, we teamed bright colours with pastels and neutrals to create a refined look, that's still bold and playful. Pastel yellow and natural tones sit harmoniously together, allowing the bright red Resene Havoc to really pop.



The Great Gatsby, by F. Scott Fitzgerald, \$32.50, tessuti.co.nz



Leather weave chair in Blush for Kate Sylvester, \$1490, douglasandbec.com



Eric Bonnin Bird vase, \$98, douglasandbec.com



Apothecary Green Tea candle, \$39.90; Catherine David Resin Mary statue in yellow, \$95, ikoiko.co.nz



ALSO IN THE SCENE OPPOSITE General Eclectic yellow dots **canister**, \$12.90, ikoiko.co.nz. Studio ceramics large round yellow **vase**, \$57.50; and medium orange **vase**, \$50, oragallery.co.nz. Margote **vases** from \$12, nest-direct.com. Pleated **candlestick holder** in coral red, \$19, boconcept.com. White Moda self-watering **pot**, \$38, bunnings.co.nz. Papier Labo **notebook** in orange, \$12, douglasandbec.com. Cast **vase** (large rectangle), \$89, nest-direct.com. *This Book Will Change Your Life*, \$54.90; and *642 Things To Draw books*, \$49.90, both from ikoiko.co.nz. All others stylist's own. Resene paints, see colours above, resene.co.nz.

COLOUR PLAY Create a focal point by colour blocking a painted panel behind a display shelf. Here we've used Resene Milan against a background of Resene Pearl Lusta.

