

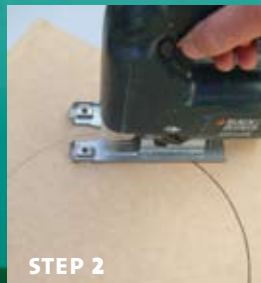
stack, store & play!

Anyone for a game of noughts and crosses? These cute and colourful storage cubes offer plenty of play time fun, too!



STEP 1

Assemble the top, sides and base of each cube and fix together with PVA glue and 40mm jolt head nails, drilling a pilot hole to prevent the MDF from splitting. Fix the back of cube into position, as shown.




STEP 2

Draw a large circle and a cross on opposite sides of the top and bottom cubes and a large circle on one side of the centre cube. Cut these out with a jigsaw. Smooth any rough edges with sandpaper.



STEP 3

Prime each of the three cubes with one coat of Resene Quick Dry primer. Allow them to dry.

 Resene Lustacryl was tinted to Spritzer, Dizzy Lizzy and Limeade.

- TO MAKE THE CUBES, YOU WILL NEED:**
- 12 squares of 18mm MDF measuring 400mm x 400mm (for top, base, and sides of each cube)
 - 3 squares of 18mm MDF measuring 400mm x 364mm (for back of each cube)
 - Resene Magnetic Magic paint, Resene Quick Dry primer & Resene Lustacryl.



STEP 4

Paint two coats of Resene Magnetic Magic on the outside of one panel of the centre cube. Allow to dry.



STEP 5

Paint the outside of the top and bottom cubes with two coats of Resene Spritzer and the outside of centre cube with two coats of Resene Dizzy Lizzy. Allow to dry.



STEP 6

Paint inside each cube with two coats of Resene Limeade. Allow to dry. Mask off a noughts and crosses grid on the side of the centre cube. Paint with two coats of Limeade. Remove the masking tape once dry.

Make your own magnetic noughts and crosses from thin MDF. Prime first with Resene Quick Dry primer undercoat. Attach self-adhesive magnetic strips to the back.

Project designed by Mark Rayner. For products used for these designs, see 'Storage cubes' on www.littlies.co.nz under Littlies Activities/Resene.



the paint the professionals use
0800 RESENE (737 363) www.resene.co.nz