

★★★ Difficulty level ★ easy ★★ moderate ★★★ challenging

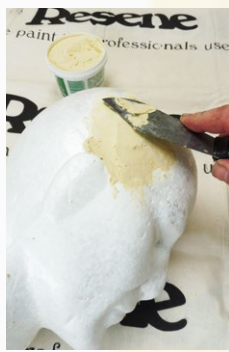
Resene art with Mark Rayner – 87

You will need:

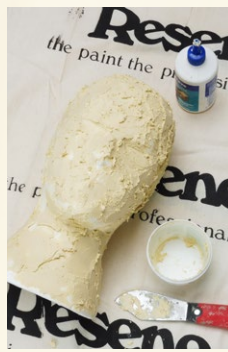
- Filler
- Putty knife or similar
- Paintbrush
- Polystyrene mannequin head
- PVA glue
- Resene Quick Dry
- Resene testpots of Resene Copyrite and Resene Proton



Step one
Apply a little PVA glue to the mannequin head.



Step two
While the glue is still wet, apply some filler to the mannequin head using the putty knife.



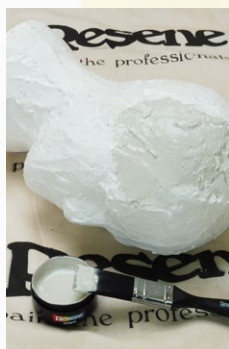
Step three
Repeat steps one and two until the head is covered with filler. Allow to dry thoroughly.



Step four
Apply one coat of PVA glue to the head and allow to dry thoroughly.



Step five
Apply one coat of Resene Quick Dry to the head and allow two hours to dry.



Step six
Apply one coat of Resene Copyrite to the head and allow two hours to dry.



Step seven
Apply one coat of Resene Proton to the head and allow two hours to dry.



Step eight
Apply a second coat of Resene Proton to the head and allow two hours to dry.

Create this metallic sculpture from a polystyrene mannequin head and a couple of Resene testpots.



To get the look:

Mark painted the background wall with Resene SpaceCote Flat tinted to Resene Red Berry.



Other ideas:

For a rich gold sculpture apply two coats of Resene Bullion over a basecoat of Resene Porsche.

For more ideas and inspiration visit your local Resene ColorShop or www.resene.com/colorshops.

Check out our special Artists' section online www.resene.com/artists.