

We know choosing just the right colours for your project can be tricky.

To make it easier we've gathered together many of our favourites in this collection. We've also included popular Resene whites and neutrals so you can create the perfect colour scheme for your place.

If you need help choosing your favourites, our friendly Resene staff are happy to help you with your colour choices.

These colours are loved by many decorators already and we hope they will help you create a look you love.

Happy decorating!

Colour chip isolator



Detach and place over your selected colour to view it on a neutral background without it being affected by surrounding colours.

Top colour tips

1. Gather together a scrapbook or Pinterest board of colours and looks you like and take this with you when you are visiting stores and making choices - it will help shop staff make recommendations.
2. Always choose the surfaces that have the least choice first - such as your carpet, flooring, benchtop and roof colour - then choose your Resene paint colours.
3. If you think a colour you are looking at on a Resene colour chart may be too dark for your interior, choose a lighter colour. Colours will look more intense when they are painted onto a larger indoor area. When painting outside, the opposite rule applies - if in doubt, choose a darker Resene colour as the sun will make the colour seem lighter.
4. Colour can have a huge impact on how a room feels. Warm up a cool room by painting it in warm colours such as creams and reds. Or cool down a hot room by painting it in soothing blues and greens.
5. If you're opting for a neutral colour scheme, choose a colour family and then vary the strength from full to double, and quarter to half strength. This will help to add extra interest to the colour scheme. The Resene whites and neutrals collection has up to six strengths of each colour and is an easy way to get started on a neutral colour scheme.
6. Ceilings get less light than walls so the same colour on a ceiling will look darker than on a wall. Choose a half or quarter strength of your Resene wall colour if you want your ceiling to look the same strength or lighter than your wall.
7. Lighting will affect your paint colours so it's important to plan your lighting at the same time. Paint a piece of A2 card with two coats from a Resene testpot and move it around the room to see how the colour changes during the day and at night as the light changes.
8. Think about the sheen level. Glossy finishes will make colours look brighter and cleaner. Flat and textured finishes will make colours seem muddier and deeper. Popular sheen level options for interiors are low sheen for walls, such as

Key:

D = Deep G = Green L = Light
M = Mid MG = Magenta MI = Mid grey
O = Ochre P = Pastel RO = Red oxide
RR = Rich red U = Ultra deep W = White

cc = Also available as a Resene CoolColour™. A change in tone or product may be required for some colours to achieve a Resene CoolColour effect. CoolColour and standard variants of a specific colour use different pigment combinations by necessity to achieve a match to the same Resene master colour standard. This can cause slight colour differences depending on the degree and type of light, which naturally varies with the time of day.

uc = An undercoat is recommended for the optimum finish.

Note 1: The approximate light reflectance value (LRV) of a colour indicates the amount of visible light that a colour will reflect. Black has a light reflectance value of 0% and absorbs all light. The surfaces are consequently very dark and can get very hot. In contrast, white has a light reflectance value of 100% and keeps a building light and cool. All colours fit within these two extremes. A Resene CoolColour™ is formulated to reflect more of the sun's energy, improving the colour's heat and total solar reflectance (TSR) properties compared to a normal colour, keeping the coating, substrate and building cooler.

Note 2: Mid to dark colours are not suitable for some exterior substrates and if used may cause damage to the substrate, such as warping, checking and premature failure. Always check with the substrate supplier prior to commencing any work to ensure colour selections fit within their guidelines. Resene also manufactures Resene CoolColour technology and this may increase the colour range that can be suitable over some heat sensitive substrates - refer Resene for further information.

Note 3: Tones listed are subject to change if colours are reformulated.

Note 4: Colours with () around them are alternative names for this colour.

Note 5: Colours may be available in selected products or sizes only. Check with Resene ColorShop or Reseller staff to ensure your selected colour is available in the product and/or size you require.

Note 6: Colours marked with * have been matched to the equivalent COLORBOND® or COLORSTEEL® colour samples in 2009. If an exact match is required we recommend you check your chosen colour against the actual sample of the product prior to purchasing. COLORBOND® is a registered trademark of Bluescope Steel Limited. COLORSTEEL® is a registered trademark of New Zealand Steel Limited.

Note 7: This colour chart is finished with Resene SpaceCote Low Sheen waterborne enamel, a product ideally suited to kitchens, bathrooms and broadwall areas.

| Colour | Colour code | Tone | Approx | | | Colour | Colour code | Tone | Approx | | |
|--|----------------|------|--------|-------------|---|-----------------|-------------|------|-------------|--|--|
| | | | LRV% | RGB | LRV% | | | | RGB | | |
| Alabaster (Cotton White, Light Sea Fog) | N96-006-099 | W | 91 | 245 244 241 | Merino (Ivory White) | Y91-009-076 | W | 78 | 232 228 222 | | |
| Arrowtown | cc Y61-022-084 | L | 29 | 159 148 133 | Midnight Moss | cc G31-010-167 | G | 6 | 66 75 71 | | |
| Aspiring | cc G80-023-101 | W | 56 | 201 199 182 | Neutral Bay | cc B66-014-259 | W | 35 | 150 159 169 | | |
| Atomic | cc B42-016-232 | L | 13 | 85 102 109 | New Denim Blue* (CS New Denim Blue) | cc B39-012-250 | L | 11 | 87 95 102 | | |
| Black White | N93-005-100 | W | 84 | 235 233 229 | Ottoman | G89-013-129 | W | 73 | 219 223 214 | | |
| Breathless | cc B84-011-257 | W | 65 | 203 212 220 | Paddock* (CS Pale Eucalypt, CS Mac Grass) | cc G56-028-117 | MMI | 24 | 133 138 120 | | |
| Breeze | cc G85-010-197 | W | 66 | 201 213 213 | Palm Green | cc G34-023-164 | G | 8 | 64 82 76 | | |
| Bright Red (Cherry, Vivid Red) | R44-148-034 | RR | 14 | 191 63 52 | Parchment | cc Y86-022-086 | W | 67 | 219 209 194 | | |
| Bud | G75-020-108 | P | 46 | 183 183 166 | Pavlova | cc Y77-038-083 | P | 51 | 204 186 160 | | |
| Canterbury Clay | cc B78-045-078 | P | 53 | 214 190 159 | Pearl Lusta | Y94-018-087 | W | 86 | 242 234 220 | | |
| Chicago | cc N49-005-116 | L | 16 | 110 111 107 | Permanent Green* (CS Permanent Green) | cc G37-031-154 | G | 9 | 75 98 86 | | |
| Coast* (CS Deep Ocean, CS Storm Blue) | cc B35-023-248 | D/MI | 10 | 75 89 99 | Pioneer Red* (CS Pioneer Red) | cc R39-075-033 | RO/U | 11 | 141 75 64 | | |
| Dark Knight | cc B31-014-247 | D | 6 | 64 76 84 | Pohutukawa | uc R36-087-023 | MG | 9 | 137 60 63 | | |
| Desperado | cc O43-074-043 | O | 13 | 145 87 69 | Poppy | R43-133-032 | RR | 13 | 178 57 53 | | |
| Duck Egg Blue | N81-007-166 | W | 58 | 196 203 200 | Putty | cc Y78-066-079 | L | 53 | 220 187 142 | | |
| Dune | cc N44-006-089 | M | 14 | 105 103 100 | Quarter Duck Egg Blue | N88-004-146 | W | 72 | 219 221 220 | | |
| Dusted Blue | cc B72-011-221 | W | 43 | 165 176 179 | Rainee | cc G81-014-144 | W | 58 | 192 201 191 | | |
| Dusted Grey | cc N80-008-098 | W | 47 | 185 183 177 | Regent Grey | cc B62-011-233 | W | 30 | 139 148 154 | | |
| Eagle | G75-021-093 | P | 49 | 190 184 168 | Rhino | cc B41-020-259 | L | 12 | 88 99 111 | | |
| Flax | cc G61-033-104 | L | 29 | 152 150 126 | Rice Cake | G94-010-092 | W | 85 | 239 235 227 | | |
| Forest Green | cc G37-022-140 | G | 9 | 80 91 78 | Rivergum* (CS Wilderness, CS Rivergum) | cc G47-022-138 | D/MI | 19 | 114 123 109 | | |
| Grey Nickel | cc G80-011-093 | W | 56 | 200 196 187 | Samba | cc B83-018-058 | G | 7 | 88 74 66 | | |
| Gull Grey (Quarter Regent Grey) | cc N75-008-229 | W | 48 | 178 186 189 | Scarpa Flow | cc N55-002-289 | P | 22 | 129 129 132 | | |
| Half Duck Egg Blue | N85-005-175 | W | 66 | 207 213 211 | Scoria* (CS Scoria) | cc R36-049-033 | RO/U | 9 | 117 76 70 | | |
| Half Fossil | cc Y87-016-081 | W | 69 | 225 215 203 | Sea Fog (Ivory, Mist Of Grey) | N92-005-100 | W | 81 | 233 231 227 | | |
| Half Inside Back | cc G73-008-174 | W | 44 | 171 179 177 | Seaweed | cc G38-025-121 | O | 10 | 81 89 75 | | |
| Half Secrets | cc G88-011-105 | W | 71 | 220 220 212 | Secrets | cc G84-013-114 | W | 65 | 211 211 201 | | |
| Half Spanish White | Y91-020-082 | W | 78 | 236 227 213 | Shark | cc N34-007-264 | M | 8 | 78 82 86 | | |
| Half Tea (Acropolis) | cc Y85-015-083 | W | 65 | 217 210 199 | Shuttle Grey | cc B52-008-257 | P | 20 | 117 122 127 | | |
| Half Truffle | cc Y84-009-084 | W | 64 | 214 208 201 | Silver Sand | cc N80-006-102 | W | 57 | 202 201 196 | | |
| Hammerhead | cc B48-023-268 | L | 17 | 102 113 128 | Snow Drift | cc N92-003-122 | W | 78 | 228 229 227 | | |
| Haven | cc G74-014-143 | W | 47 | 177 185 177 | Solitude | B94-011-264 | W | 83 | 228 236 245 | | |
| High Tide* (CS Inevitable, CS Indigo Blue) | cc B36-011-261 | MMI | 11 | 87 92 98 | Soothe | cc B881-014-041 | W | 58 | 215 197 194 | | |
| Indian Ink | cc B26-017-270 | U | 5 | 58 65 76 | Spanish Green | cc G64-021-136 | L | 33 | 149 159 145 | | |
| Inside Back | cc G66-009-165 | P | 36 | 154 162 159 | Thorndon Cream (Bubble White) | Y87-016-090 | W | 71 | 223 217 206 | | |
| Jaguar | cc B27-008-276 | U | 5 | 64 66 72 | Toorak | cc B829-018-044 | U | 6 | 83 67 62 | | |
| Jumbo | cc N64-001-095 | W | 32 | 154 153 153 | White Painter | cc N89-007-087 | W | 72 | 225 221 215 | | |
| Karaka* (CS Karaka) | cc G31-010-106 | G | 7 | 76 76 70 | Wood Bark | cc B830-013-056 | O | 6 | 80 72 67 | | |

Remember you only get authentic Resene colours when you use Resene tinters in Resene paint bases. Resene decorative tinters with no added VOCs and the true Resene colour formulations are unique and only available from Resene. So make sure you insist on genuine Resene products and tinters for your project.

Resene

the paint the professionals use

1800 738 383
resene.com.au

0800 737 363
resene.co.nz

© Copyright Resene Paints Ltd, June 2018. Accurate reproduction of the colours shown in this colour range is only available using genuine Resene premium products, tinters and formulations. These are not available from other manufacturers or retailers. Unauthorised use of Resene colours and colour names breaches Resene's copyright and trademark rights. Colours may appear to vary with different gloss levels, lighting, substrate texture and application method and technique. Always try a Resene testpot or view a large physical colour sample before making your final choice. Please recycle.



C112471 - 8924

the Classics collection

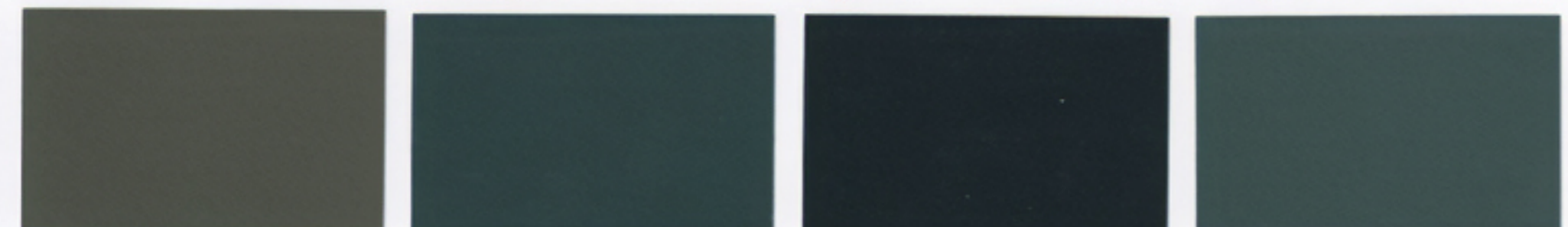
a curated collection of favourite colours

Resene

the paint the professionals use



Shark™cc N34-007-264 Dark Knight™cc B31-014-247 Jaguar™cc B27-008-276 Midnight Moss™cc G31-010-167



Dune™cc N44-006-089 Coast™cc B35-023-248 Indian Ink™cc B26-017-270 Atomic™cc B42-016-232
(CB Deep Ocean, CS Storm Blue)



Chicago™cc N49-005-116 High Tide™cc B36-011-261 Rhino™cc B41-020-259 Inside Back™cc G66-009-165
(CB Ironstone, CS Indigo Blue)



Scarpa Flow™cc N55-002-289 New Denim Blue™cc B39-012-250 Hammerhead™cc B48-023-268 Half Inside Back™cc G73-008-174
(CS New Denim Blue)



Jumbo™cc N64-001-095 Shuttle Grey™cc B52-008-257 Neutral Bay™cc B66-014-259 Duck Egg Blue™cc N81-007-166



Dusted Grey™cc N80-008-098 Regent Grey™cc B62-011-233 Breathless™cc B84-011-257 Half Duck Egg Blue™cc N85-005-175



Grey Nickel™cc G80-011-093 Dusted Blue™cc B72-011-221 Breeze™cc G85-010-197 Quarter Duck Egg Blue™ N88-004-146



Silver Sand™cc N80-006-102 Gull Grey™cc N75-008-229 Solitude™ B94-011-264 Snow Drift™cc N92-003-122
(Quarter Regent Grey)



Palm Green™cc G34-023-164 Karaka™cc G31-010-106 Wood Bark™cc BR30-013-056 Toorak™cc BR29-018-044
(CS Karaka)



Permanent Green™cc G37-031-154 Forest Green™cc G37-022-140 Sambuca™cc BR32-018-058 Scoria™cc R36-049-033
(CS Permanent Green)



Rivergum™cc G47-022-138 Seaweed™cc G38-025-121 Arrowtown™cc Y61-022-084 Pioneer Red™ R39-075-033
(CB Wilderness, CS Rivergum)



Paddock™cc G56-028-117 Flax™cc G61-033-104 Eagle™ G75-021-093 Desperado™cc O43-074-043
(CB Pale Eucalypt, CS Mist Green)



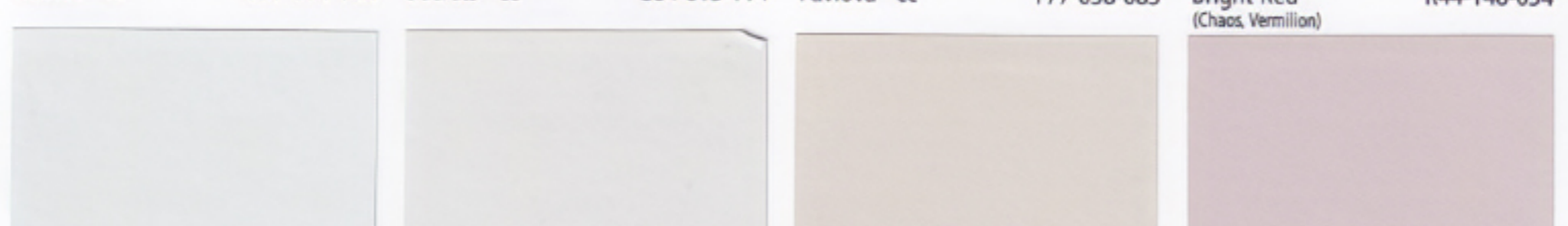
Spanish Green™cc G64-021-136 Bud™ G75-020-108 Putty™cc Y78-066-079 Pohutukawa™uc R36-087-023



Haven™cc G74-014-143 Aspiring™cc G80-023-101 Canterbury Clay™cc BR78-045-078 Poppy™ R43-133-032



Rainee™cc G81-014-144 Secrets™cc G84-013-114 Pavlova™cc Y77-038-083 Bright Red™ R44-148-034
(Chaos, Vermillion)



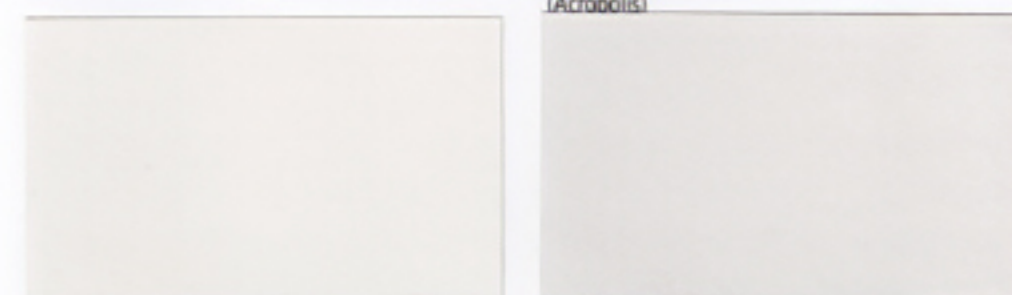
Ottoman™ G89-013-129 Half Secrets™cc G88-011-105 Parchment™cc Y86-022-086 Soothe™cc BR81-014-041



Thorndon Cream™ Y87-016-090 Half Truffle™cc Y84-009-084
(Bubble White)



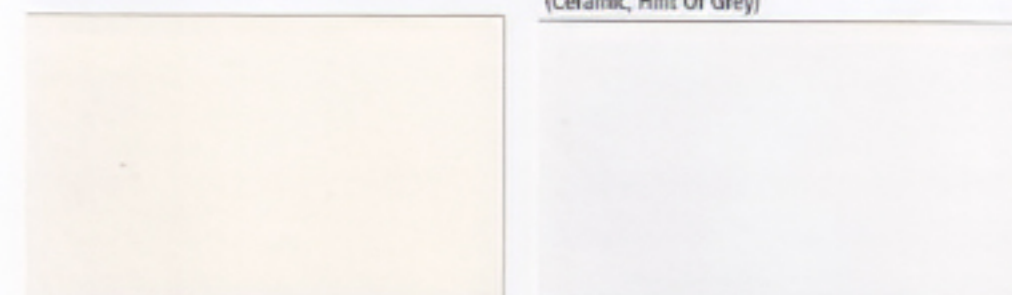
Half Fossil™cc Y87-016-081 Half Tea™cc Y85-015-083
(Acraolis)



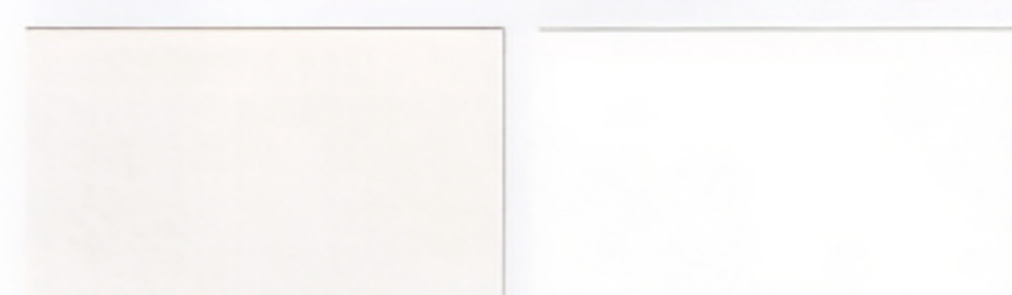
Merino™ Y91-009-076 White Pointer™cc N89-007-087
(Zinc White)



Half Spanish White™ Y91-020-082 Sea Fog™ N92-005-100
(Ceramic, Hint Of Grey)



Pearl Lusta™ Y94-018-087 Black White™ N93-005-100



Rice Cake™ G94-010-092 Alabaster™ N96-006-099
(Cotton Wool, Eighth Sea Fog)

