

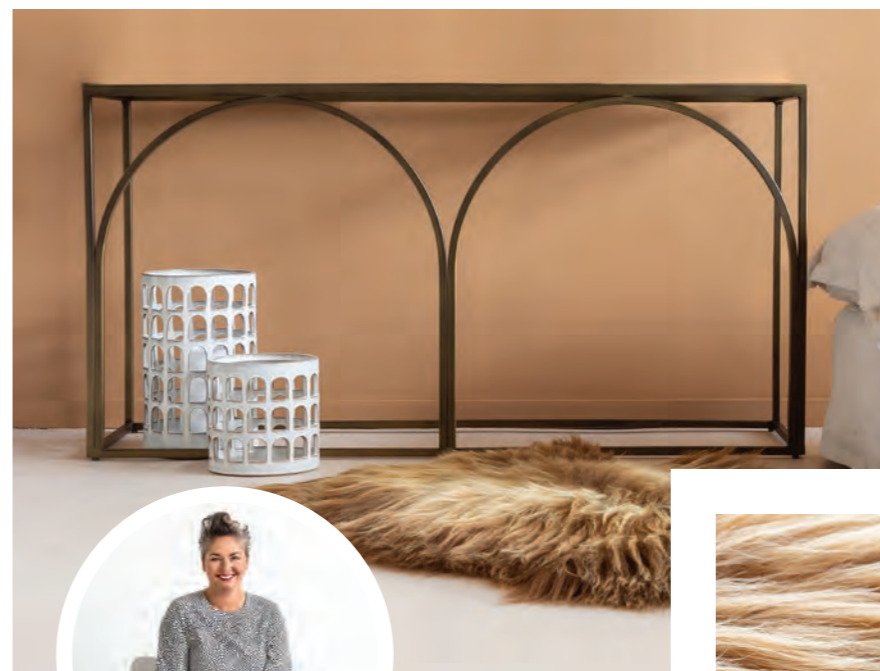
ONE WAY OR *another*

COLOUR GURU AND INTERIOR STYLIST ALEX FULTON WORKS HER MAGIC ON THE MADRAS LINK PONTE BRASS CONSOLE TABLE FROM BALLANTYNES AGAINST A BACKDROP OF RESENE DOUBLE KALGOORIE SANDS AND RESENE EIGHTH KALGOORIE SANDS.



NEUTRAL SAND

Natural and lighter tones are not just for sunnier climes or sun-filled days – here, I have brought these natural sandy Resene hues into a wintry feel with multiple textures and warmth. Layering your space with tones and textures in the same family of colours adds instant ‘toastiness’ to your interior. The wall features irregular incomplete circles that add interest to a plain wall and provides an organic backdrop to a simple space.



ALEX FULTON
Interior Stylist

VERSATILE VESSELS

Add candles or LED-charged lamps to these striking lanterns, and it’s an instant glow-fest. On the ground or on a tabletop, these arched cut-outs add immediate interest and light for any space inside or out.

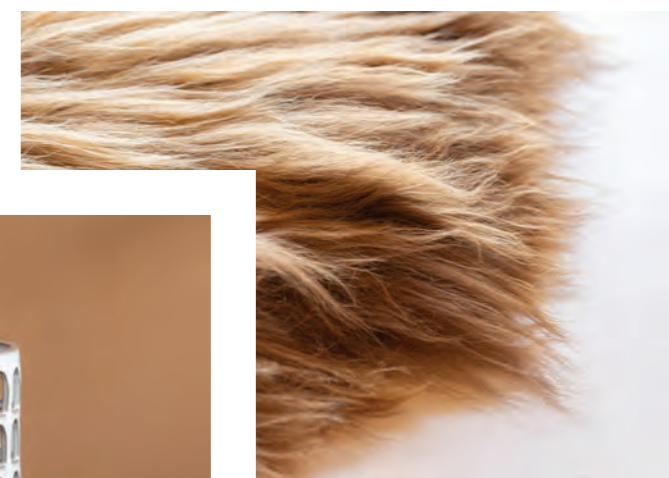


BOLD AS BRASS

Simple and stylish – this side table is an easy piece of elegance to add to a hallway or entrance area or living space. Its brass finish easily complements many colour palettes, and its detail of the modern arch makes it a timeless piece.

NORDIC WARMTH

The caramel tones and long hair of these Icelandic Sheepskins add instant texture and warmth. Drape over a couch, a footstool or the floor to establish a cosy corner or setting. Sheepskins are perfect for these cooler days and can be swapped out for lighter fabrics when the weather changes.



TRAY AND DISPLAY

This versatile tray can be used to cluster some favour objects or used (as in this setting) as an objet d’art – using it on its side adds height to your display of adornments.



NEUTRAL SAND: Madras Link Ponte Brass Console ballantynes.co.nz; Pottery Barn Woven Seagrass Round Tray ballantynes.co.nz; West Elm Ceramic Cutout Lantern Geo White Glazed Stoneware 12 Inch ballantynes.co.nz; Tuscan Vase Cream casualandcountry.co.nz; Modern Sand Vase casualandcountry.co.nz; Zoe Small Timber Tray countryroad.co.nz; Zoe Ring Stand countryroad.co.nz; Sea Coral Décor casualandcountry.co.nz; Caramel Icelandic Sheepskin XL corcovado.co.nz; Resene Double Kalgoorie Sands and Resene Eighth Kalgoorie Sands resene.co.nz/colorshops

ONE WAY OR *another*

ALEX FULTON BRINGS LAYERS OF SERENITY TO THE MADRAS LINK PONTE BRASS CONSOLE TABLE FROM BALLANTYNES WITH RESENE GREEN HOUSE AND RESENE AMULET.

ALL THE GREENS

Green is not just for plants and nature – bringing green indoors can also create a calm and soothing space for indoor living. Considered the most restful colour to the eye, it brings a sense of freshness and harmony and generally makes you feel emotionally safe – perfect for these short wintery days. Instead of having a plain wall of green, add some geometrical shapes in a darker Resene colour to create interest and depth.

NATURAL LIGHT

Not all light has to be from the ceiling or downlights – having mood lighting from a standard or table lamp will help to make your space intimate and interesting. It instantly creates a more casual and relaxed vibe while highlighting areas of interest.

PLAID BACK

Keep playing with colour with the rug you choose for the space – keeping things tonal will be playful and considered.



CRAFTY PLANTING

Use planters like these to add texture and different heights to make interesting vignettes. Mixing up shapes and adding living plants will give an added depth to the space you are decorating.



ALL THE GREENS: Madras Link Ponte Brass Console ballantynes.co.nz; Dayze Tall Planter Sage casualandcountry.co.nz; Dayze Round Planter Sage casualandcountry.co.nz; Ico Traders All Day Tray icotraders.co.nz; Città Moon Table Lamp in Ivy cittadesign.com; Wooden Mountains henrytrading.co.nz; Dilana Twill Rug in Green dilana.co.nz; Arnold Circus Stool in Green indefinitedefinite.com; Snake Plant stylists own; Resene Green House and Resene Amulet resene.co.nz/colorshops