

# Tui cute

Adorn your home with your very own piece of Kiwiana artwork, using our Resene paint-by-numbers colour palette.

○ Resene Half Dusted Blue



○ Resene Lynch

- 1 Resene All Black
- 2 Resene White
- 3 Resene Gulf Stream
- 4 Resene Madison
- 5 Resene Ming
- 6 Resene Aquamarine
- 7 Resene Highland
- 8 Resene Thor
- 9 Resene Pirate Gold
- 10 Resene Stinger
- 11 Resene Lemon Twist
- 12 Resene Karma

## Step by step

### YOU WILL NEED:

- 12 Resene testpots (see colours listed)
- Paint brushes – small to medium
- A3 200gsm watercolour paper
- Resene removable masking tape
- White ink pen
- Frame and matting board

1 Start by either downloading the template or photocopying and enlarging the image provided onto a piece of good quality art stock. We used 200gsm watercolour paper and enlarged our template to fit A3 size.

2 Tape your template to create a nice even border (A) and use Resene Karma to fill the background. Apply two coats for a nice even coverage (B). Do the same for the inner circle using Resene Lemon Twist (C).

3 Now move on to painting your flowers and branches (D). Using a very fine brush here will help with the smaller details. Resene ColorShops have multipacks of small artist brushes ideal for projects like this one.

4 Paint the bird starting with the darkest colours first, like Resene Madison (E) and Resene All Black. Continue with the lighter colours, leaving the smaller details for last.

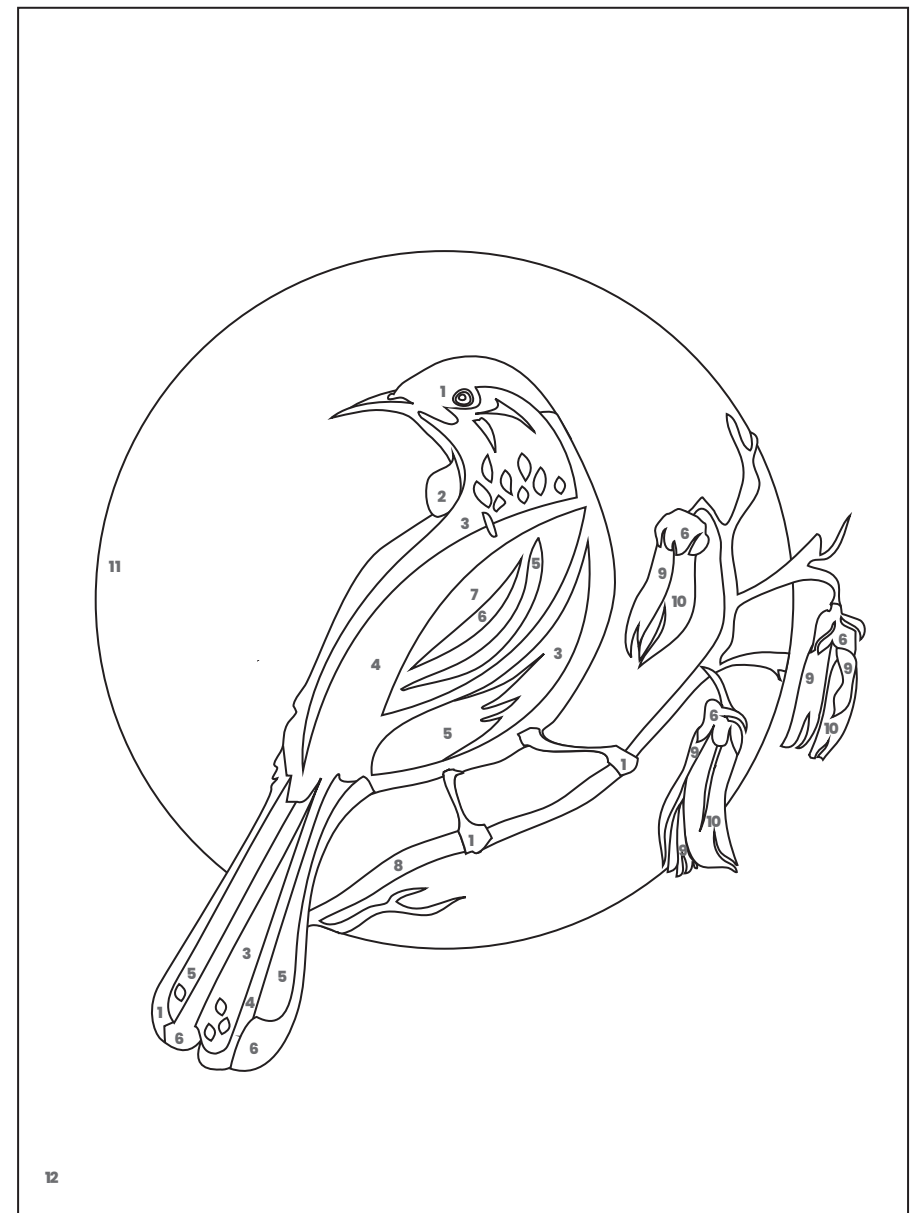
5 Paint the speckles in random colours of your choice from the palette provided. Use Resene Stinger for the top edge of the beak.

6 For the final touches, use a white ink pen (F) to make some small feathering around the birds crest (in c shapes) and some highlights on the flowers if you choose.

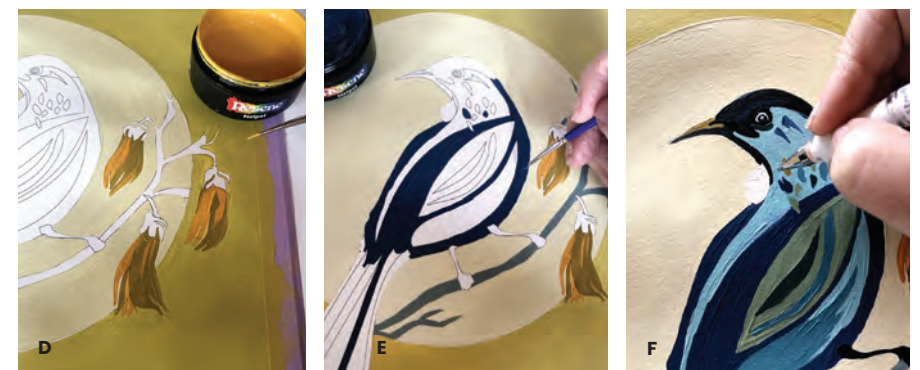
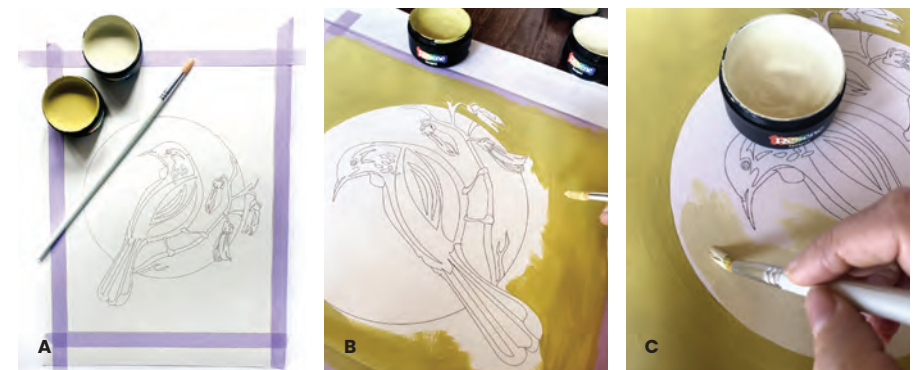
7 Once dry, check over your work and make any little touch-ups if needed.

8 Choose your frame and have your local framers cut a matting to fit neatly around your art work, giving it a professional finish as well as a nice clean edge. **W**

**RESENE COLOUR TIP:** It's a good idea to start painting the background and then work towards the foreground. That way, your bird sits nicely on the top, covering any outlines. Leave small detailing until the end.



TEMPLATE – PHOTOCOPY AND ENLARGE TO DESIRED SIZE OR VISIT [WOMANMAGAZINE.CO.NZ/RESENE](http://WOMANMAGAZINE.CO.NZ/RESENE) FOR DOWNLOADABLE TEMPLATE



Craft editor & stylist: Marsha Smith.